



## Hampstead Heath, Highgate Wood and Queen's Park Committee

**Date:** MONDAY, 18 JULY 2016

**Time:** 11.00 am

**Venue:** COMMITTEE ROOMS, 2ND FLOOR, WEST WING, GUILDHALL

**Members:**

Virginia Rounding (Chairman)	Barbara Newman
Karina Dostalova (Deputy Chairman)	Jeremy Simons
Deputy John Barker	Alderman Ian Luder (Ex-Officio Member)
Dennis Cotgrove	Graeme Smith (Ex-Officio Member)
Keith Bottomley	John Beyer, Heath & Hampstead Society
Revd Dr Martin Dudley	Councillor Melvin Cohen, (London Borough of Barnet)
Anne Fairweather, Tower	Rachel Evans, (RSPB)
Clare James	Councillor Sally Gimson, (London Borough of Camden)
Michael Hudson	Maija Roberts, (Ramblers Association/Open Spaces Society)
Professor John Lumley	Philip Wright, English Heritage)
Barbara Newman	
Jeremy Simons	

**Enquiries:** David Arnold  
david.arnold@cityoflondon.gov.uk  
020 7332 1174

**Lunch will be served in Guildhall Club at the rising of the Committee**  
**NB: Part of this meeting could be the subject of audio or video recording**

**John Barradell**  
**Town Clerk and Chief Executive**

# **AGENDA**

## **Part 1 - Public Agenda**

1. **APOLOGIES**
  2. **MEMBERS DECLARATIONS UNDER THE CODE OF CONDUCT IN RESPECT OF ITEMS ON THIS AGENDA**
  3. **MINUTES**
    - a) Hampstead Heath, Highgate Wood & Queen's Park Committee Minutes (Pages 1 - 8)  
To agree the public minutes and summary of the meeting held on 16 May 2016.
    - b) Hampstead Heath Consultative Committee Minutes (Pages 9 - 18)  
To note the draft public minutes of the meeting held on 27 June 2016.
    - c) Queen's Park Joint Consultative Group Minutes (Pages 19 - 22)  
To note the draft public minutes of the meeting held on 21 June 2016.
  4. **REVENUE OUTTURN 2015/16**  
Joint report of the Chamberlain and the Director of Open Spaces.  

**For Information**  
(Pages 23 - 30)
- Hampstead Heath**
5. **SUPERINTENDENT'S UPDATE**  
Report of the Superintendent of Hampstead Heath.  

**For Discussion**  
(Pages 31 - 38)
  6. **CROSS COUNTRY PILOT ON THE HAMPSTEAD HEATH EXTENSION**  
Report of the Superintendent of Hampstead Heath.  

**For Decision**  
(Pages 39 - 48)
  7. **MANAGEMENT WORK PLAN FOR SMALL TUMULUS FIELD**  
Report of the Superintendent of Hampstead Heath.  

**For Decision**  
(Pages 49 - 64)

8. **PONDS PROJECT PROGRESS REPORT**

Joint report of the Ponds Project Director and the Superintendent of Hampstead Heath.

**For Decision**  
(Pages 65 - 72)

9. **HABITAT RESTORATION OF THE BOATING POND AND TUMULUS FIELD**

Report of the Superintendent of Hampstead Heath.

**For Decision**  
(Pages 73 - 88)

10. **ANNUAL REPORT ON HAMPSTEAD HEATH CONSTABULARY FOR THE PERIOD 1 APRIL 2015 TO 31 MARCH 2016**

Report of the Superintendent of Hampstead Heath.

**For Decision**  
(Pages 89 - 106)

11. **CYCLICAL WORKS PROGRAMME BID 2017/18**

Report of the City Surveyor.

**For Information**  
(Pages 107 - 116)

**Highgate Wood & Queen's Park**

12. **QUEEN'S PARK - SUPERINTENDENT'S UPDATE**

Report of the Superintendent of Hampstead Heath.

**For Decision**  
(Pages 117 - 126)

13. **QUESTIONS ON MATTERS RELATING TO THE WORK OF THE COMMITTEE**

14. **ANY OTHER BUSINESS THAT THE CHAIRMAN CONSIDERS URGENT**

**Part 2 - Non-Public Agenda**

15. **EXCLUSION OF THE PUBLIC**

MOTION: That under Section 100A(4) of the Local Government Act 1972, the public be excluded from the meeting for the following items of business on the grounds that they involve the likely disclosure of exempt information as defined in Part I of Schedule 12A of the Local Government Act.

**For Decision**

16. **NON-PUBLIC MINUTES**

To agree the non-public minutes of the meeting held on 16 May 2016.

**For Decision**  
(Pages 127 - 128)

17. **PONDS PROJECT PROGRESS REPORT**

To consider the Non-Public appendices to the joint report of the Ponds Project Director and the Superintendent of Hampstead Heath at Item 8.

**For Information**  
(Pages 129 - 132)

18. **QUESTIONS ON MATTERS RELATING TO THE WORK OF THE COMMITTEE**

19. **ANY OTHER BUSINESS THAT THE CHAIRMAN CONSIDERS URGENT AND WHICH THE COMMITTEE AGREE SHOULD BE CONSIDERED WHILST THE PUBLIC ARE EXCLUDED**

**Part 3 - Confidential Agenda**

20. **RESTRUCTURE OF A TEAM WITHIN THE OPEN SPACES DEPARTMENT**

Report of the Superintendent of Hampstead Heath.

**For Decision**

## **HAMPSTEAD HEATH, HIGHGATE WOOD AND QUEEN'S PARK COMMITTEE**

**Monday, 16 May 2016**

**Minutes of the meeting of the Hampstead Heath, Highgate Wood and Queen's Park Committee held at the Guildhall EC2 at 1.45 pm**

### **Present**

#### **Members:**

Deputy John Barker  
Keith Bottomley  
Dennis Cotgrove  
Karina Dostalova  
Revd Dr Martin Dudley  
Clare James  
Michael Hudson  
Professor John Lumley  
Barbara Newman

Virginia Rounding  
Jeremy Simons  
Alderman Ian Luder (Ex-Officio Member)  
Graeme Smith (Ex-Officio Member)  
John Beyer (Heath & Hampstead Society)  
Rachel Evans (RSPB)  
Councillor Sally Gimson (London Borough of Camden)  
Philip Wright (English Heritage)

#### **Officers:**

David Arnold	- Town Clerk's Department
Fern Aldous	- Town Clerk's Department
Sam Cook	- Remembrancer's Department
Alison Elam	- Group Accountant, Chamberlain's Department
Edward Wood	- Comptroller & City Solicitor's Department
Sue Ireland	- Director of Open Spaces
Bob Warnock	- Superintendent of Hampstead Heath
Declan Gallagher	- Open Spaces Department
Richard Gentry	- Open Spaces Department
Gerry Kiefer	- Open Spaces Department
Philip Everett	- Ponds Project Director

### **1. APOLOGIES**

Apologies for absence were received from Anne Fairweather, Councillor Melvin Cohen (London Borough of Barnet), and Maija Roberts (Open Spaces Society/Ramblers' Association).

### **2. MEMBERS DECLARATIONS UNDER THE CODE OF CONDUCT IN RESPECT OF ITEMS ON THIS AGENDA**

There were none.

### **3. ORDER OF THE COURT OF COMMON COUNCIL**

**RESOLVED** – That the Order of the Court of Common Council 21 April 2016, appointing the Committee and approving its Terms of Reference, be noted.

4. **ELECTION OF CHAIRMAN**

**RESOLVED** – That in accordance with Standing Order No 29, Virginia Rounding be elected Chairman for the ensuing year.

5. **ELECTION OF DEPUTY CHAIRMAN**

The Committee proceeded to elect a Deputy Chairman in accordance with Standing Order No. 30. A list of Members eligible to stand was read by the Town Clerk; Karina Dostalova and the Revd. Dr Martin Dudley both expressed an interest in serving as Deputy Chairman.

The result was as follows:

Karina Dostalova	7 votes
Revd. Dr Martin Dudley	6 votes

Karina Dostalova was therefore elected to serve as Deputy Chairman of the Hampstead Heath, Highgate Wood and Queen's Park Committee for the ensuing year.

**RESOLVED** – that in accordance with Standing Order No. 30, Karina Dostalova be elected Deputy Chairman for the ensuing year.

6.1 **HAMPSTEAD HEATH, HIGHGATE WOOD & QUEEN'S PARK COMMITTEE MINUTES**

**RESOLVED** – That the public minutes and non-public summary of the meeting on 14 March 2016 be approved.

**Matters Arising**

City of London Corporation (Open Spaces) Bill

The Remembrancer advised that a House of Commons Committee would now be appointed to consider the Bill, including a petition against it by the Kennel Club. It was hoped that this would take place before the summer recess.

6.2 **HIGHGATE WOOD JOINT CONSULTATIVE COMMITTEE MINUTES**

**RESOLVED** – That the draft minutes of the meeting on 13 April 2016 be noted.

**Matters Arising**

Community and Events

The Chairman advised that the Community Day would take place on Sunday 4 September 2016.

7. **CONSULTATIVE COMMITTEE APPOINTMENTS 2016/17**

The Committee considered a report of the Town Clerk regarding the annual appointments to the various Committees and Consultative Groups.

**RESOLVED** – That:-

- a) The appointment and composition of the following bodies be approved as follows for the ensuing year:-
  - i) **Hampstead Heath Consultative Committee**

Virginia Rounding (Chairman)  
Karina Dostalova (Deputy Chairman)

**ii) Highgate Wood Joint Consultative Committee**

Virginia Rounding (Chairman)  
Karina Dostalova (Deputy Chairman)  
Professor John Lumley  
Barbara Newman  
Jeremy Simons

**iii) Queen's Park Joint Consultative Group**

Virginia Rounding (Chairman)  
Karina Dostalova (Deputy Chairman)  
Deputy John Barker  
Professor John Lumley  
Barbara Newman

**iv) Keats House Consultative Committee**

Dennis Cotgrove

**v) Open Spaces and City Gardens Committee**

John Beyer (Heath and Hampstead Society)

- b) The appointment of two officially nominated representatives of local schools from the Friends of Salusbury School and the Ark Franklin Primary Academy to the Queen's Park Joint Consultative Group, be approved; and
- c) The additional appointment of an officially nominated representative of the Kensal Rise Residents' Association to the Queen's Park Joint Consultative Group, be approved.

**8. 2016 TO 2019 OPEN SPACES BUSINESS PLAN**

The Committee received a report of the Director of Open Spaces that provided Members with an outline of the Open Spaces Department's Business Plan for the period 2016 to 2019.

**RESOLVED** – That the Open Spaces Business Plan 2016-19 be noted.

**9. PARLIAMENT HILL, GOLDERS HILL PARK AND HIGHGATE WOOD CAFÉ LEASES.**

The Committee considered a report of the Superintendent of Hampstead Heath that sought approval to the award of interim leases to the current incumbents of the Parliament Hill, Golders Hill Park and Highgate Wood Cafés and to establish a proposed way forward and consultation process for the future running of the cafés. It was emphasised by the Chairman and the Superintendent that there would also be full input from the Hampstead Heath Consultative Committee (HHCC) and the Highgate Wood Joint Consultative Committee in determining the way forward and the consultation process. The Superintendent added that the new Parliament Hill Fields Lido Café leaseholder had recently started trading and negotiations were currently underway with the approved new Queen's Park Café leaseholder.

Members first considered the recommendation to award interim leases to the current incumbents of the three cafés with a view to ensuring that the eventual long-term leaseholders could take possession during February 2018. The

Committee agreed to permit the City Surveyor to negotiate with the existing incumbents of the three cafés to renew each on the same principal terms as in the existing leases at a rent to be increased in line with inflation for a term expiring on 12 January 2018, in order to give time to consult the public and for Officers to prepare an Options Appraisal for each café.

The Committee then considered the guiding principles for the refreshment facilities. In addition to the proposed principles outlined in the report, Members suggested including measures for the following:-

- commitment to customer satisfaction;
- knowledge of area local to cafés;
- community cohesion;
- acceptable food hygiene rating;
- promotion of healthy eating;
- provision of a safe, relaxed and familiar environment.

The Superintendent advised that the creation of a Café Working Party with representation from this Committee and both the Hampstead Heath and Highgate Wood Consultative Committees would enable a methodology for the appointment of long-term leaseholders to be established through appropriate consultation. The Working Party would review the suggestions made by this Committee and the Consultative Committees and all consultation outcomes in full.

The Committee considered and approved the appointment of Keith Bottomley as the Chairman's representative on the Working Party and recommended that an additional representative of the Golders Hill Park Café be appointed preferably from amongst the HHCC membership or, failing that, from amongst the lead petitioners. The Committee also considered the lead petitioners request for all five of them to be included in the Working Party but Members agreed that the membership of the Working Party should not exceed 11 in total. It was noted that all petitioners could attend the meetings of the Working Party, as they would be public meetings, but the named representative would be entitled to vote on a particular matter.

In response to Members' questions regarding the use of independent consultants, the Superintendent advised that separate consultants would be used for catering and the consultation process. In response to a Member's suggestion, the Committee agreed that the catering consultant would be appointed after the next HHHC meeting on 27 June 2016 but that the Superintendent would appoint a consultant specialising in consultation as soon as practicable. Members noted that an update regarding the comments received at that HHCC meeting would be reported to the next Committee meeting in July 2016.

**RESOLVED** – That:-

- a) authority be delegated to the Superintendent to agree catering leases with the three existing proprietors expiring 12 January 2018, in consultation with the City Surveyor and Comptroller & City Solicitor;



- b) the Comptroller & City Solicitor be instructed to complete the documentation for the three café leases;
- c) the draft guiding principles relevant to the provision of café facilities at Hampstead Heath and Highgate Wood be progressed for further discussion and input from the Consultative Committees;
- d) a public consultation be undertaken to inform an Options Appraisal to guide future decisions on the café leases;
- e) members of the Highgate Wood Joint Consultative Committee be invited to attend the Hampstead Heath Consultative Committee (HHCC) meeting on 27 June 2016, to discuss the draft guiding principles and the proposed programme for public consultation;
- f) the establishment and membership of a Café Working Party be approved;
- g) Keith Bottomley be appointed as the Hampstead Heath, Highgate Wood and Queen's Park Committee's representative to the Café Working Party;
- h) the Superintendent be instructed to appoint both a Consultation (before HHCC on 27 June 2016) and a Catering Consultant (after HHCC on 27 June 2016), each to provide independent advice.

**10. OAK PROCESSIONARY MOTH PLAN 2016**

The Committee received a report of the Director of Open Spaces that provided Members with the plans for Oak Processionary Moth (OPM) management across the North London Open Spaces for 2016. The Director added that the recent colder weather had resulted in fewer caterpillars than expected. The progress of the management plan would be reported back to the Committee in late 2016.

**RESOLVED** – That the OPM management plan for 2016 be noted.

**11. SUPERINTENDENT'S UPDATE**

The Committee received a report of the Superintendent of Hampstead Heath that provided Members with an update regarding the following management and operational activities across the Heath, Highgate Wood and Queen's Park since March 2016:-

**Property**

- The Superintendent was pleased with the completed works to the Hill Garden and Pergola;
- Works to replace the oak timbers at the Pergola were expected to begin in August.

**Planning**

Members noted that the applicant wished to present the new proposals for Athlone House to the Hampstead Heath Consultative Committee on 27 June 2016 but the Committee suggested that they be invited to present on an alternative date instead as the Consultative Committee agenda for June was already very full.

### **Parliament Hill Viewpoint Sign**

Artwork for the new skyline viewpoint sign had been produced in collaboration with the Heath and Hampstead Society. The panoramic sign would take four weeks to produce and could be unveiled with the Heath and Hampstead Society at an opening ceremony on 27 June 2016. The Chairman added that the afternoon of 27 June 2016 had also been identified as a possible date for an all Court of Common Council visit to the Ponds Project, the details of which would be circulated by the Town Clerk in due course.

### **Queen's Park**

- Visitors were being asked to complete an online survey in relation to the types of events that could and should take place at the Park;
- An Open Gardens event hosted by the Queen's Park Area Residents' Association would be taking place at the Park soon.

### **Projects**

- Consultations for the summer sports programme would start soon following discussions with the Sports Advisory Forum;
- The fleet and machinery board were aiming to generate funds for energy conservation through the sale of surplus vehicles and machinery;
- The 2017/18 fees and charges would be reported to this Committee in January 2017 in order that the Consultative Committee might be fully consulted in November 2016.

### **Constabulary**

- A consultation regarding officer working hours was currently underway;
- In response to a Member's question, the Superintendent advised that the aim of the consultation was to provide an increased Constabulary presence at the busiest times of the day.

### **Staff Lodge Policy**

In response to a Member's question, the Superintendent advised that the purpose of the policy review was to ensure all lodges were inhabited by staff with relevant skills and responsibilities.

**RESOLVED** – That the update regarding the management and operational activities across the Heath, Highgate Wood and Queen's Park be noted.

## **12. HAMPSTEAD HEATH PONDS PROJECT UPDATE**

The Committee received a joint report of the Hampstead Heath Ponds Project Director and the Superintendent of Hampstead Heath that provided an update regarding the Hampstead Heath Ponds Project. Members received a presentation from the Ponds Project Director that included photographs of the work being carried out. The Project Director added that photographs of the Model Boating Pond and Catchpit sites taken by a drone were available to view on the [Ponds Project Blog](#).

Members were advised that the culvert at Hampstead No. 2 Pond had taken longer than expected but the Project remained on schedule and within budget. The Project Director added that there was a claim with the contractor going

through the appropriate legal process and the financial implications of this would be reported to the Committee once the case was concluded.

**RESOLVED** – That the Hampstead Heath Ponds Project update be noted.

13. **SUPERINTENDENT'S UPDATE FOR HIGHGATE WOOD**

The Committee received a report of the Superintendent of Hampstead Heath that provided an update regarding management and operational activities in Highgate Wood.

**RESOLVED** – That the Superintendent's update for Highgate Wood be noted.

14. **QUESTIONS ON MATTERS RELATING TO THE WORK OF THE COMMITTEE**

There were none.

15. **ANY OTHER BUSINESS THAT THE CHAIRMAN CONSIDERS URGENT**

Events

The Chairman reminded Members that the Highgate Harriers Night of the 10,000m Personal Bests, which was a qualifying event for the Rio Olympics 2016, was taking place at the Heath on 21 May 2016.

Consultation and Committee Dates

The Chairman advised that the schedule of meetings for this Committee and the Hampstead Heath Consultative Committee was to be reviewed to improve levels of consultation with the Consultative Committee. It was suggested that both Committees should meet four times per year with the Consultative Committee meeting approximately four weeks before each meeting of this Committee. The Committee were supportive of this review and noted that it could come into effect during 2017.

In response to a Member's concerns regarding the representativeness of the Consultative Committee, the Chairman advised that its membership would be reviewed in due course in accordance with The London Government Reorganisation (Hampstead Heath) Order 1989.

16. **EXCLUSION OF THE PUBLIC**

**RESOLVED** – That under Section 100A(4) of the Local Government Act 1972, the public be excluded from the meeting for the following items on the grounds that they involve the likely disclosure of exempt information as defined in Part 1 of Schedule 12A of the Local Government Act.

17. **NON-PUBLIC MINUTES**

**RESOLVED** – That the non-public minutes of the meeting on 8 March 2016 be approved.

18. **QUESTIONS ON MATTERS RELATING TO THE WORK OF THE COMMITTEE**

There were two questions.

19. **ANY OTHER BUSINESS THAT THE CHAIRMAN CONSIDERS URGENT AND WHICH THE COMMITTEE AGREE SHOULD BE CONSIDERED WHILST THE PUBLIC ARE EXCLUDED**

There was one item of other business.

**The meeting closed at 3.40 pm**

-----  
Chairman

**Contact Officer: David Arnold**  
**david.arnold@cityoflondon.gov.uk**

## **HAMPSTEAD HEATH CONSULTATIVE COMMITTEE**

**Monday, 27 June 2016**

**Minutes of the meeting of the Hampstead Heath Consultative Committee held at the Parliament Hill Staff Yard, Hampstead Heath at 7.00 pm**

### **Present**

#### **Members:**

Virginia Rounding (Chairman)	Susan Rose (Highgate Conservation Area Advisory Committee)
Karina Dostalova (Deputy Chairman)	Steve Ripley (Ramblers' Association)
John Etheridge (South End Green Association)	Ellin Stein (Mansfield Conservation Area Advisory Committee and Neighbourhood Association Committee)
Colin Gregory (Hampstead Garden Suburb Residents' Association)	Richard Sumray (London Council for Sport and Recreation)
Michael Hammerson (Highgate Society)	Simon Taylor (Hampstead Rugby Club)
Helen Payne (Friends of Kenwood)	David Walton (Representative of Clubs using facilities on the Heath)
Mary Port (Dartmouth Park Conservation Area Advisory Committee)	John Weston (Hampstead Conservation Area Advisory Committee)
Stewart Purvis (Vale of Health Society)	
Thomas Radice (Heath and Hampstead Society)	

#### **In attendance:**

Nick Bradfield (Dartmouth Park Conservation Area Advisory Committee)  
Keith Bottomley (member of Management Committee)  
Jon Sheath (Jon Sheath Associates)

#### **Officers:**

Fern Aldous	- Town Clerk's Department
David Arnold	- Town Clerk's Department
Bob Warnock	- Superintendent of Hampstead Heath
Declan Gallagher	- Operational Services Manager
Meg Game	- Ecologist
Lucy Gannon	- Projects and Management Support Officer
Richard Gentry	- Constabulary and Queen's Park Manager
Paul Maskell	- Leisure and Events Manager
Esther Sumner	- Open Spaces Business Manager
Philip Everett	- Project Director, Hampstead Heath Ponds Project

### **1. APOLOGIES**

Apologies for absence were received from Ray Booth (Barnet Mencap), Susan Nettleton (Heath Hands), and Harunur Rashid Khan (Bangladeshi Social Forum).

## 2. **MEMBERS' DECLARATIONS UNDER THE CODE OF CONDUCT IN RESPECT OF ITEMS ON THE AGENDA**

David Walton (Representative of Clubs using Facilities on the Heath) declared a non-pecuniary interest in item 6 as a member of the London Heathside Athletics Club.

### 3.1 **Minutes of the Hampstead Heath Consultative Committee**

**RESOLVED** – That the minutes of the meeting held on 7 March 2016 be approved.

## **Matters Arising**

### Events

The Events Policy would be considered at the next meeting following consultation with members during September 2016.

### Golders Hill Park

A new Zoo Team Leader had been recruited from the Zoological Society London. The New Team Leader would now engage with users to develop a new set of objectives for the Zoo.

### 3.2 **Minutes of the Hampstead Heath, Highgate Wood and Queen's Park Committee**

The Committee received the draft public minutes of the Hampstead Heath, Highgate Wood and Queen's Park Committee meeting held on 16 May 2016. The Superintendent advised that the unveiling of the new Parliament Hill viewpoint sign had been delayed until September 2016 at the earliest. A date would be circulated once finalised.

Members noted that it was useful to receive these draft minutes so it was agreed that the Town Clerk would circulate a link to them after each Hampstead Heath, Highgate Wood and Queen's Park Committee meeting.

**RESOLVED** – That the draft public minutes of the Committee meeting held on 16 May 2016 be noted.

### 3.3 **Minutes of the Hampstead Heath Sports Advisory Forum**

The Committee received the minutes of the Hampstead Heath Sports Advisory Forum meeting held on 16 May 2016. The Chairman of the Forum congratulated Heath staff on a very successful Highgate Harriers Night of 10,000m event. The Leisure and Events Manager added that he had received a congratulatory letter from Lord Sebastian Coe thanking them for the event.

**RESOLVED** – That the minutes of the Hampstead Heath Sports Advisory Forum meeting held on 16 May 2016 be noted.

## 4. **SUPERINTENDENT'S UPDATE**

The Committee received a report of the Superintendent of Hampstead Heath that provided an update on management and operational activities across the Heath since March 2016 and sought input from members regarding a review of the consultation arrangements. Members considered the following matters:-

#### Consultation

- The Chairman stressed the commitment of herself, the Deputy Chairman and the Superintendent to improving consultation arrangements, in order to make it as effective as possible, in the best interests of the Heath and its users.
- The Superintendent opened discussions by acknowledging that the Heath could not function properly without a well-informed, active and fully representative consultative committee.
- The Superintendent added that he wished to increase the levels of forward planning and consultation for the development of regular committee reports that could be adjusted for the Hampstead Heath, Highgate Wood and Queen's Park Committee (Management Committee), taking into account Consultative Committee members' comments after each meeting.
- The Management Plan, which would be reported regularly to and discussed with the Consultative Committee, would become more outcomes-focused so that members were aware of the steps taken since the previous meeting and the steps to be taken before the next.
- Members were supportive of a change from three Consultative Committee and six Management Committee meetings to four meetings of each per year, with Consultative Committee meetings held approximately four weeks beforehand to allow feedback to be reflected in reports to the Management Committee – this should be piloted for a one-year period if agreed by the Management Committee.
- Some members (London Council for Sport and Recreation, Highgate Conservation Area Advisory Committee) suggested that reports to the Consultative Committee could be clearer on what members needed to comment on to allow the Management Committee to infer clear recommendations from Consultative Committee minutes as well as in the amended reports to the Management Committee.
- Some members (Friends of Kenwood, Hampstead Conservation Area Advisory Committee) proposed that Consultative Committee minutes could include the results of members' votes on required decisions, although others suggested that voting was unnecessary as minutes should record the range of views and include a clear consensus on each decision, representation and/or recommendation summarised by the Chairman at the end of each item.
- A member (Vale of Health Society) suggested that separate minutes of Management Committee meetings that specified when the views of the Consultative Committee had been taken into account could be provided to the Consultative Committee.
- In response to a member's (Representative of Clubs using facilities on the Heath) question regarding written representations from Consultative Committee members, the Superintendent advised that the existing

practice was that members could circulate their comments concerning certain agenda items via the Town Clerk in advance of each meeting.

- Members noted that the Consultative Committee walks were a valuable exercise, which should continue to be held two or perhaps nine days before each meeting with details of members' discussions at the walk to be circulated by the Superintendent via the Town Clerk at or before the following meeting.
- In response to a member's (Hampstead Garden Suburb Residents' Association) request, the Open Spaces Business Manager advised that the upcoming Departmental Business Plan could be reported to the Consultative Committee for feedback.

### Representation

- The Chairman raised the matter of representation on the Consultative Committee and noted that, for instance, young people and families were currently not represented within the membership of the Committee.
- Most members suggested that the current membership represented a variety of Heath user groups who could engage with a wide range of users – one member (Hampstead Garden Residents' Association) added that members of the wider public from the groups represented on the Consultative Committee could be invited to observe one meeting annually.
- One member (Representative of Clubs using facilities on the Heath) queried his capacity to consult with and represent all of the various clubs across the Heath and the challenge of ensuring two way communication between the groups he represents and the Consultative Committee.
- The addition of local Ward Members was raised by the Deputy Chairman but members noted a selection process would be difficult as the Heath was situated across two London Boroughs and a large number of Ward areas – the Chairman added that the London Boroughs of Barnet and Camden were both represented on the Management Committee and the Deputy Chairman suggested that local schools could be approached to include parents and young families.
- A member (London Council for Sport and Recreation) suggested that other user groups could be consulted on certain matters where necessary on an ad hoc basis.
- A member (Highgate Conservation Area Advisory Committee) suggested that a Hampstead Heath projects blog (similar to the Ponds Project blog) could be introduced, as well as increased advertising of the Consultative Committee, including how to contact members, on notice boards and online.

### Planning

- A presentation from the developers regarding the planning application for Athlone House on Thursday 30 June, 10:00 – 11:00am at the Parliament Hill Staff Yard meeting room.
- A member (Highgate Society) added that the proposals did not involve increasing the area of the basement at Athlone House.



### Open Spaces Learning Team

- The appointments had been made to all the roles based on Hampstead Heath.
- In partnership with the Learning Team, the Superintendent was exploring opportunities to utilise the Hive to support the Secondary learning provision, which would involve the conversion of redundant football changing rooms to create two indoor classrooms as well as an outdoor learning space – a report would be prepared for the next meeting.
- Heath Hands were thanked for their contribution to the Kenwood Education Garden which was viewed as a great success.

### Benches

The Superintendent confirmed that the waiting list would be closed and a more detailed report would be submitted for consideration at the next meeting.

### Conservation

Following discussions on the Consultative Committee walk two days previously, plans to re-site the fencing approaching South End Green ten metres further back behind the plane trees would be taken forward. In addition, the Superintendent would discuss with the City Surveyor changing the fence to a cleft chestnut post and rail fence and the Heath team would plant a mixed native hedge along the fence line.

### **RESOLVED – That:-**

- a) The Superintendent's update of management and operational activities across the Heath be noted; and
- b) Members' views regarding consultation arrangements be noted.

### **5. PARLIAMENT HILL, GOLDERS HILL PARK AND HIGHGATE WOOD CAFE LEASES**

The Committee considered a report of the Superintendent of Hampstead Heath regarding the guiding principles relevant to the provision of café facilities at Hampstead Heath and Highgate Wood and the creation of a Café Working Party to co-ordinate the public consultation of all three café leases.

The Chairman advised that a number of draft guiding principles for the new refreshment facilities had been developed and were being reported to the Consultative Committee for further consideration. She added that ensuring high Food Hygiene Rating scores and staff being paid at or above the London Living Wage were non-negotiable and would therefore not be discussed as part of the consultation.

Members noted and considered the following matters:-

- The guiding principles would feed into the deliberations of the proposed Café Working Party.
- A member (Highgate Society) suggested that too many guiding principles could cause them to become too prescriptive or restrictive.
- A member (Vale of Health Society) highlighted the importance of ensuring that the principles resulted in a level playing field for the incumbents and any new applicants.

- Following a short presentation from the consultation and engagement consultant, members noted that community engagement would be an important part of the process.
- Members believed that the proposed membership of the Café Working Party was too heavily weighted towards City Corporation Officers without enough local community involvement, which would be provided by the addition of the other lead petitioners – members therefore suggested that three petitioners (one for each café) be included on the Café Working Party.
- The Consultative Committee appointed Nick Bradfield (Dartmouth Park Conservation Area Advisory Committee) and John Etheridge (South End Green Association) to the Café Working Party with a particular brief to represent Golders Hill Park and Parliament Hill Cafés respectively, and noted that Michael Hammerson (Highgate Society) may be the Highgate Wood representative, unless there are any other expressions of interest from the Highgate Wood Joint Consultative Committee.
- The Chairman proposed, and it was agreed, that Keith Bottomley would be her representative on the Café Working Party.
- A date for the first Café Working Party meeting would be circulated as soon as possible.

**RESOLVED – That:-**

- a) the minutes of the Hampstead Heath, Highgate Wood and Queen's Park Committee meeting held on 16 May in relation to the update on café leases, be noted;
- b) Nick Bradfield (Dartmouth Park Conservation Area Advisory Committee) and John Etheridge (South End Green Association) be appointed to the Café Working Party as representatives of the Consultative Committee, with particular interest in and knowledge of Golders Hill Park and Parliament Hill Cafés respectively.

**6. CROSS COUNTRY PILOT ON THE HAMPSTEAD HEATH EXTENSION**

The Committee considered a report of the Superintendent of Hampstead Heath regarding a young athletes' cross-country race to be piloted on the Hampstead Heath Extension in 2016/17. The Operational Services Manager advised that the chances of any potential damage to the ground caused by the race had been considered minimal as the race was for young runners and would be held in an area ideal for sporting activities. A member (Hampstead Rugby Club) added that the use of the Extension could promote an area of the Heath that young users might not have previously been aware of. The Committee also noted that a letter had been produced by the Heath and Hampstead Society in support of the pilot event, provided it met certain criteria. The Sports Advisory Forum were supportive of the letter and the event.

**RESOLVED –** That the holding of the event on the Heath Extension as a pilot, using the identified route to ensure that no permanent damage is caused, be supported by the Consultative Committee.

**7. MANAGEMENT WORK PLAN FOR SMALL TUMULUS FIELD**

The Committee considered a report of the Superintendent of Hampstead Heath that informed members of a detailed work plan for managing Small Tumulus Field.

In response to members' questions that had been posed during the Committee walk, the Ecologist advised that the purple-leaf plane tree and the oak tree were not being removed.

**RESOLVED** – That the Small Tumulus Field Management Work Plan be noted and approved.

8. **PONDS PROJECT PROGRESS REPORT**

The Committee received a joint report of the Ponds Project Director and the Superintendent of Hampstead Heath that provided updates on progress, budget and the risk register for the Hampstead Heath Ponds Project.

**RESOLVED** – That the Ponds Project progress report be noted.

9. **HABITAT RESTORATION OF THE BOATING POND AND TUMULUS FIELD**

The Committee received a report of the Superintendent of Hampstead Heath that outlined the restoration work to be undertaken to create an attractive and ecologically more valuable landscape surrounding the Model Boating Pond and Tumulus Field. The Superintendent added that the habitat restoration proposals had been reported to the Community Working Group and their feedback had been taken into account.

In response to a member's (Highgate Society) question, the Ecologist advised that hedgerow and tree planting would be carried out along the western habitat boundary.

**RESOLVED** – That the habitat restoration proposals for the Model Boating Pond and Tumulus Field be noted.

10. **ANNUAL REPORT ON HAMPSTEAD HEATH CONSTABULARY FOR THE PERIOD 1 APRIL 2015 TO 31 MARCH 2016**

The Committee received a report of the Superintendent of Hampstead Heath regarding the performance of the Hampstead Heath Constabulary during the period 1 April 2015 to 31 March 2016, which members noted would be re-submitted to the next meeting for further consideration. The Superintendent added that the work of the Terrence Higgins Trust would continue and be reviewed annually. The Constabulary would continue to implement the Engagement, Education and Enforcement Plan for the period 2016/17.

The Superintendent added that a further report on the use of drones on Hampstead Heath would be submitted to the next meeting.

**RESOLVED** – That the report be deferred to the next Consultative Committee meeting, but that the continuation of the partnership with the Terrence Higgins Trust be supported.

11. **2016-19 OPEN SPACES BUSINESS PLAN**

The Committee received a report of the Director of Open Spaces that outlined the aspects of the Department's Business Plan for the period 2016 to 2019 that related to Hampstead Heath, Highgate Wood and Queen's Park. The Superintendent advised that the progress being made towards the Business Plan, as well as the proposed objectives for the 2017-20 Business Plan, would be reported to the next Consultative Committee meeting, in order that the members might contribute at an early stage to the development of the Plan. A member (Hampstead Garden Suburb Residents' Association) suggested that progress regarding the increasing risk of the impact of housing and highways development be reported back to the Consultative Committee during this consultation process.

**RESOLVED** – That the report be noted and a further report be submitted to the next Consultative Committee meeting.

12. **CYCLICAL WORKS PROGRAMME BID 2017/18**

The Committee received a report of the City Surveyor regarding the Cyclical Works Programme Bid 2017/18. A member (Hampstead Garden Suburb Residents' Association) suggested that the principles and the priorities for the programme of works that were being proposed should be provided, along with more detail regarding the prioritisation of work and the framework methodology.

**RESOLVED** – That the report of the City Surveyor regarding the Cyclical Works Programme Bid 2017/18 be noted.

13. **OAK PROCESSIONARY MOTH PLAN 2016**

The Committee received a report of the Director of Open Spaces regarding the plans for Oak Processionary Moth management across London and the South East during 2016.

**RESOLVED** – That the Oak Processionary Moth Plan for 2016 be noted.

14. **QUESTIONS**

There were none.

15. **ANY OTHER BUSINESS THAT THE CHAIRMAN CONSIDERS URGENT**

The Chairman advised the Committee that the Hampstead Heath, Highgate Wood and Queen's Park Committee dinner would be taking place on Monday 10 October 2016, with details of the location and time to be circulated shortly.

Members thanked Mary Port for her contribution to the Consultative Committee during her years of service and conveyed to her their good wishes for the future. The Committee then welcomed Nick Bradfield who would be joining the Consultative Committee as the member representing the Dartmouth Park Conservation Area Advisory Committee.

16. **DATE OF NEXT MEETING**

**RESOLVED** – That the date of the next meeting, to be held on Monday 7 November 2016, be noted.

**The meeting closed at 9.20 pm**

-----  
Chairman

**Contact Officer: David Arnold**  
**David.Arnold@cityoflondon.gov.uk**

This page is intentionally left blank

## QUEEN'S PARK JOINT CONSULTATIVE GROUP

Tuesday, 21 June 2016

Minutes of the meeting of the Queen's Park Joint Consultative Group held at Committee Room, St Anne's and St Andrew's Church, 125 Salusbury Road, NW6 6RG at 12 noon

### **Present**

#### **Members:**

Virginia Rounding (Chairman)	Virginia Bonham Carter (Ark Franklin Primary Academy)
Karina Dostalova (Deputy Chairman)	Helen Durnford (Queen's Park Area Residents' Association)
Barbara Newman	Giovanna Torrico (Friends of Salusbury School)
Councillor Neil Nerva (London Borough of Brent)	Vicky Zentner (Kensal Rise Residents' Association)
John Blandy (Queen's Park Area Residents' Association)	

#### **Officers:**

Fern Aldous	- Town Clerk's Department
David Arnold	- Town Clerk's Department
Bob Warnock	- Superintendent of Hampstead Heath
Richard Gentry	- Constabulary & Queen's Park Manager

#### **1. APOLOGIES**

Apologies for absence were received from Deputy John Barker, Professor John Lumley, and Councillor James Denselow (London Borough of Brent).

#### **2. MEMBERS' DECLARATIONS UNDER THE CODE OF CONDUCT IN RESPECT OF ITEMS ON THIS AGENDA**

There were none.

#### **3. MINUTES**

**RESOLVED** – That the public minutes of the meeting held on 18 November 2015 be approved.

### **Matters Arising**

#### Ecology and Environment

The Queen's Park Manager advised that green waste was being removed via skips for £350-400 per skip. Removal figures and costs would be reported to the next Group meeting.

#### Children's Play Area

The application for funding for new swings in the children's sandpit and play area had not been successful but the Queen's Park Area Residents' Association were donating £3,000 to fund the new swings instead.

#### Football Coaching

Discussions regarding a licence were ongoing with Kiddikicks and a junior running group. A licence had recently been issued for a weeknight Tag Rugby session.

#### **4. SUPERINTENDENT'S UPDATE REPORT**

The Group received a report of the Superintendent of Hampstead Heath that provided an update on the operational work and accomplishments of the Queen's Park Team since November 2015. Members noted and considered the following matters:

#### Staffing

- Proposals for changes to staff working arrangements would be reported to the Establishment and Hampstead Heath, Highgate Wood & Queen's Park Committees in July 2016.
- Staff across the North London Open Spaces Division currently worked flexibly across all three sites and permanent full-time staff at the Park were supplemented by a number of casual staff throughout spring and summer.
- There were eight full-time equivalent staff positions, including one permanent post that was currently being covered by a casual member of staff.
- In response to a member's (Queen's Park Area Residents' Association) concerns regarding recent perceived staff shortages at the children's play area swimming pool, the Park Manager advised that signage had been installed by the pool notifying visitors of who to contact if it was closed.

#### Operational Management

- The petanque area had recently been replaced by new trim trail equipment.
- The London Borough of Brent had funding available for additional equipment and the Group requested that any additional new equipment have a more natural timber look, so long as the LBB were able to provide funding for maintenance of such equipment.
- The Group also noted that there were a number of outdoor gyms at nearby parks so any new equipment at Queen's Park should be limited in number and similar to the current trim trail equipment, as opposed to moving gym equipment.
- The Deputy Chairman suggested a new, perhaps more child-friendly, design for the donation box in the Children's Farm to encourage more donations from young people.
- In response to a question from the Deputy Chairman regarding health and safety reporting following a recent incident, the Park Manager advised that training would be provided to casual staff as a reminder of how to respond to reports of anti-social behaviour – the Superintendent



added that the incident in question would be reviewed and learning outcomes would be applied in future.

#### Visitors and Community

- The Queen's Park Area Residents' Association held a successful Open Gardens and Studios event on 19 June 2016.
- Positive feedback had been received from visitors regarding the recent introduction of Heath Constabulary Officers to the Park.
- An online visitor survey seeking views on events in the Park was currently available on the website and via Twitter.
- The Group considered the proposals for an all-day fireworks event on 5 November 2016, which aimed to attract approx. 10,000 visitors:-
- Following concerns surrounding the event's impact on the green space, the scale of the event and the desire for a more community-led event aimed at regular visitors to the Park, the Group agreed to decline the request for an event licence and await the outcome of feedback from the events survey to consider this as a future event for 2017 at the earliest.
- The Group also noted that a smaller scale community-led event could involve donation collections to cover the cost of the firework display and would cause less damage to the Park.

#### **RESOLVED – That:-**

- a) The Superintendent's update report be noted; and
- b) the request for a licence for the fireworks display be declined, awaiting the outcome of feedback from the Event Survey to consider this as a future event.

#### **5. 2016-19 OPEN SPACES BUSINESS PLAN**

The Group received a report of the Director of Open Spaces that provided details regarding the aspects of the Open Spaces Department's Business Plan 2016-19 that related to Hampstead Heath, Highgate Wood and Queen's Park.

**RESOLVED –** That the Open Spaces Department Business Plan 2016-19 be noted.

#### **6. OAK PROCESIONARY MOTH PLAN 2016**

The Group received a report of the Director of Open Spaces that outlined the plans for Oak Processionary Moth (OPM) management across London and the South East during 2016. Members were advised that OPM had been found and removed from the same oak trees as in 2015. The trees had since been sprayed and signage had been erected near them. A member (London Borough of Brent) added that he would check whether the London Borough of Brent had been using glyphosate spray at their sites.

**RESOLVED –** That the report be noted.

#### **7. QUESTIONS**

There were none.

8. **ANY OTHER BUSINESS THAT THE CHAIRMAN CONSIDERS URGENT**

The Group considered a recent application received by the Park Manager from a company who wished to install a wooden pavilion structure in an area of the Park during summer, with a view to using it for pop-up business and events such as food stalls and music performances. Members noted the negative effect that additional food outlets could have on the new Café leaseholder and concerns regarding increased car travel to the Park for regular events. The Group agreed to await the outcome of feedback from the event survey to consider this as a future addition to the Park.

In response to a member's (Queen's Park Area Residents' Association) question regarding the toilets by the children's play area, the Superintendent agreed to consider refurbishment opportunities to create improved access from the play area.

9. **DATE OF NEXT MEETING**

**RESOLVED** – That the date of the next meeting on Wednesday 9 November 2016 be noted.

**The meeting closed at 1.15 pm**

-----  
Chairman

**Contact Officer: David Arnold**  
**David.Arnold@cityoflondon.gov.uk**

<b>Committee(s)</b>	<b>Dated:</b>
Hampstead Heath, Highgate Wood and Queen's Park Committee	18 July 2016
<b>Subject:</b> Revenue Outturn 2015/16 – Hampstead Heath, Highgate Wood and Queen's Park	<b>Public</b>
<b>Report of:</b> The Chamberlain & the Director of Open Spaces	<b>For Information</b>
<b>Report author:</b> Derek Cobbing, Chamberlain's Department	

## Summary

This report compares the revenue outturn for the services overseen by your Committee in 2015/16 with the final agreed budget for the year. In total, there was a better than budget position of £296,000 for the services overseen by your Committee compared with the final agreed budget for the year as set out below.

	<b>Final Agreed Budget</b> <b>£000</b>	<b>Outturn</b> <b>£000</b>	<b>Increase/ (Decrease)</b> <b>£000</b>
<b>Local Risk</b>			
Director of Open Spaces	5,761	5,477	(284)
City Surveyor	1,520	1,609	89
<b>Central Risk</b>	(1,062)	(984)	78
<b>Recharges</b>	1,502	1,323	(179)
<b>Total</b>	<b>7,721</b>	<b>7,425</b>	<b>(296)</b>

The Director's better than budget position of £284,000 (Local Risk) is mainly due to a £222,000 underspend at Hampstead Heath, further detail can be found in paragraph 4a). This underspend has been aggregated with budget variations on services overseen by other committees, which produces an overall better than budget position of £885,000 (Local Risk) across all Open Spaces. Requests to carry forward £191,000 of this underspend for projects at Hampstead Heath & Highgate Wood will be considered by the Chamberlain in consultation with the Chairman and Deputy Chairman of the Resource Allocation Sub Committee.

The City Surveyor's worse than budget position of £89,000 is mainly due to a £105,000 overspend in the additional works programme which is partially off-set by a £16,000 underspend in the remaining Surveyor's Local Risk works, detailed reasons can be found in paragraph 4b).

The reduction of income (£78,000) in Central Risk is explained in paragraph 4c).

## Recommendation(s)

It is recommended that this revenue outturn report for 2015/16 and the consequential implications for the 2016/17 budget are noted.

## **Main Report**

### **Budget Position for 2015/16**

1. The 2015/16 latest approved budget for Hampstead Heath, Highgate Wood & Queen's Park services overseen by your Committee received in November 2015 was £7.648M. This budget was endorsed by the Court of Common Council in March 2016 and subsequently updated for approved adjustments. Movement of the original Local Risk budget to the final agreed budget is provided in Appendix A.

### **Revenue Outturn 2015/16**

2. Actual net expenditure for your Committee's services during 2015/16 totalled £7.425M, an underspend of £296,000 compared with the final agreed budget.
3. A summary comparison with the final agreed budget for the year is tabulated below. In the tables, figures in brackets indicate income or in hand balances, increases in income or decreases in expenditure.

Hampstead Heath, Highgate Wood, and Queen's Park  
Comparison of 2015/16 Revenue Outturn with Final Agreed Budget

	<i>Original Budget</i>	Final Agreed Budget	Revenue Outturn	Variation Increase/ (Decrease)	
	£000	£000	£000	£000	
<b>LOCAL RISK</b>					
<b>Director of Open Spaces</b>					Reason*
Hampstead Heath	4,783	4,805	4,583	(222)	
Hampstead STEM	49	43	43	0	
Queen's Park	540	540	506	(34)	
Highgate Wood	373	373	345	(28)	
<b>Total Director of Open Spaces Local Risk</b>	<b>5,745</b>	<b>5,761</b>	<b>5,477</b>	<b>(284)</b>	a)
<b>City Surveyor</b>					
City Surveyors Local Risk	250	449	433	(16)	
Additional Works Programme	1,812	1,071	1,176	105	
<b>Total City Surveyor Local Risk</b>	<b>2,062</b>	<b>1,520</b>	<b>1,609</b>	<b>89</b>	b)
<b>TOTAL LOCAL RISK</b>	<b>7,807</b>	<b>7,281</b>	<b>7,086</b>	<b>(195)</b>	
<b>CENTRAL RISK</b>					
Hampstead Heath	(1,108)	(1,073)	(995)	78	
Queen's Park	16	16	16	0	
Highgate Wood	(5)	(5)	(5)	0	
<b>TOTAL CENTRAL RISK</b>	<b>(1,097)</b>	<b>(1,062)</b>	<b>(984)</b>	<b>78</b>	c)
<b>RECHARGES</b>					
Insurance	98	128	106	(22)	
Support Services	483	677	565	(112)	
Legal	0	1	1	0	
Surveyor's Employee Recharge	215	224	235	11	
I. S. Recharge	109	265	271	6	
Recharges Within Fund (Directorate & Democratic Core)	238	201	140	(61)	
Recharges Across Fund (Structural Maintenance – Inspections)	0	6	5	(1)	
<b>TOTAL RECHARGES</b>	<b>1,143</b>	<b>1,502</b>	<b>1,323</b>	<b>(179)</b>	d)
<b>OVERALL TOTAL</b>	<b>7,853</b>	<b>7,721</b>	<b>7,425</b>	<b>(296)</b>	

\*See paragraph 4

## **Reasons for Significant Variations**

4. a) The Director of Open Spaces £284,000 better than budget position is mainly due to additional income generated at Hampstead Heath from facilities, weddings, filming and car parking charges. There were a number of vacant posts and projects which were not able to be completed due to the Ponds Project being a major focus for the site.  
  
b) The City Surveyor's £89,000 worse than budget position is mainly due to an overspend on the completion of a 2012/13 additional works project.  
  
c) The reduction of income of £78,000 in Central Risk is due to the budget for the maximum contribution to the running costs of Hampstead Heath from the Hampstead Heath Trust allowable under the transfer order being £1.185M. Income generated by the trust fund was £1.107M which leaves a shortfall of £78,000.  
  
d) The £179,000 decrease in Recharges is mainly due to a reduction in Recharges to the Open Spaces Directorate (£51,000), this is because the learning programme at the Directorate was implemented later than anticipated. There was also a reduction in Support Services costs (£101,000) the majority of which was a reduction in Central Support within the Comptroller & City Solicitor where a reduced requirement was sought in respect of the Ponds Project, both the reductions are at Hampstead Heath.

## **Local Risk Carry Forward to 2016/17**

5. Chief Officers can generally request underspends of up to 10% or £500,000 (whichever is the lesser) of the final agreed local risk budget to be carried forward, so long as the underspending is not fortuitous and the resources are required for a planned purpose. Such requests are subject to the approval of the Chamberlain in consultation with the Chairman and Deputy Chairman of the Resources Allocation Sub Committee.
6. Overspends are carried forward in full and are met from the agreed 2015/16 budgets.
7. The Director's better than budget position of £284,000 (Local Risk) has been aggregated with budget variations on services overseen by other committees which produce an overall better than budget position of £885,000 (Local Risk) of which £500,000 has been submitted for a carry forward.

Hampstead Heath and Highgate Wood have requested the following carry forwards:-

- £10,000 for a feasibility study to explore options for refurbishing the "Hive" building at Parliament Hill, to provide learning spaces and accommodation for the Learning Project Team and volunteers.

- £40,000 to complete the consultation of the sports review project and to fund the options appraisal (Hampstead Heath).
- £50,000 café improvement work in preparation for re-tendering exercise (Hampstead Heath).
- £60,000 for various consultations including the cafes, the Hampstead Heath Management Plan, and customer satisfaction surveys.
- £16,000 for replacement Pay & Display machines which have either been vandalised or have technical problems (Hampstead Heath).
- £15,000 electronic gate installation at Highgate Wood which needs to be installed for health & safety reasons.

## **Appendices**

- Appendix A – Movement between Original 2015/16 and the final agreed Budget

**Derek Cobbing**  
Senior Accountant

T: 020 7332 3519

E: [derek.cobbing@cityoflondon.gov.uk](mailto:derek.cobbing@cityoflondon.gov.uk)

This page is intentionally left blank



## Appendix A

	<b>£000</b>
<b>Original Local Risk Budget (Director of Open Spaces &amp; City Surveyor)</b>	<b>7,807</b>
<b>Director of Open Spaces</b>	
Employees - The decrease in employees is mainly due to a combination of deleted posts as reported to Committee on 21 <sup>st</sup> September 2015 and a transfer of posts to the new Learning Programme.	(240)
Premises – The main reason for this rise is an increase in client funded minor improvements at Hampstead Heath, and an increase in Council Tax charges on tied accommodation at Highgate Wood	64
Transport - Reduction in vehicle purchases at Hampstead Heath	(28)
Supplies & Services – Mainly due to an increase in consultants fees at Hampstead Heath, and a reduction in materials at Queens Park.	34
Income – The 2015/16 Original Budgets included a provision in respect of an education grant, although the application had not been submitted at that time. It was unlikely that any grant funding would be obtained in the 2015/16 year. Reductions in expenditure particularly employees (see above) have been made to off-set this loss of grant funding.	186
<b>City Surveyor</b>	
In the original estimate, the whole value of the 2015/16 AWP programme was included, this was revised to spread it over the remaining years of the programme.	(542)
<b>Final Agreed Local Risk Budget (Director of Open Spaces &amp; City Surveyor)</b>	<b>7,281</b>

This page is intentionally left blank

<b>Committee(s)</b>	<b>Dated:</b>
Hampstead Heath Management Committee	18 July 2016
<b>Subject:</b> Superintendents update for July 2016	<b>Public</b>
<b>Report of:</b> Superintendent of Hampstead Heath	<b>For Discussion</b>
<b>Report author:</b> Bob Warnock, Superintendent	

## Summary

This report proposes a series of changes to the consultation arrangements in relation to the Hampstead Heath Consultative Committee and provides an update on management and operational activities across Hampstead Heath since May 2016.

## Recommendation

Members are asked to:

- Note and take account of the Hampstead Heath Consultative Committee representations.
- Discuss and provide feedback on the contents of this report.

## Main Report

### Consultation

1. The first substantive item on the agenda for the June Consultative Committee was a full and wide ranging discussion to ensure the Consultative Committee meetings and walks are as effective as possible to enable the Consultative Committee to make “.....representations to the Management Committee about any matter which, in the opinion of the Consultative Committee, affects or is likely to affect the Heath Lands”. (Section 9 (1) London Government Reorganisation (Hampstead Heath) Order 1989).
2. Taking account of the feedback from the Consultative Committee, I would welcome Members input on the following proposals.

### Forward Planning

3. I propose introducing a report on matters for consideration during the next year; effectively a forward plan. Consultative Committee Members will be able to see what is planned, form their views and gather those of their groups, and decide how and on which aspects they would like to be consulted in each case. The overarching objective is to ensure both the Consultative and Management Committees consider proposals at the formative stage and Members have adequate time to consider the proposals and to respond.

## **Reactive Reports**

4. Inevitably, there will be other matters that arise which cannot be anticipated, and these will be dealt with as at present by single-subject reports, initially to the Consultative Committee. I will then produce an updated report, taking account of their representations for decision by the Management Committee, as I have been doing to date.

## **Data**

5. We will provide data and statistics that will support the development of a series of key performance indicators, which we can use to show progress towards particular targets for the Heath. I already collect some of the data for this purpose, such as wildlife monitoring, tree safety inspections, accidents, waste sent for disposal, enforcement data and so on, but there are other data streams I need to collect in order to provide the full picture. An important starting point will be updating the visitor information and demographics of Heath users. The purpose is to aid the consultation process, by giving Members a broader overview about the way the Heath is used.

## **Heath funding**

6. Currently, the Management Committee receive regular reports from the Chamberlain on the Hampstead Heath budget, however, I believe it would be helpful for the Consultative Committee to have an overview of the Heath budget, to provide greater context to the matters being discussed. It is critical that discussions consider the implications of increasing resource commitments for one area or activity which may affect other areas, often resulting in the need to reduce costs elsewhere or to identify additional income streams.

## **Report format to include consultation**

7. There is scope to revise the format of reports to the Consultative Committee, firstly, to make it clearer what the Consultative Committee is being asked to comment upon. Secondly, we will include a section setting out the initial consultation and liaison that Officers have undertaken, prior to reporting to the Consultative Committee.

## **Scheduling meetings**

8. It will be helpful to discuss the scheduling of meetings, to allow time to take account of the Consultative Committee's feedback before formulating reports to the Management Committee. I would like to suggest a four week interval following a Consultative Committee meeting. I would also like to discuss with Members, moving to a meeting schedule comprising of four Consultative Committee meetings followed by four Management Committee meetings per year.

## **Walks programme**

9. I propose retaining the Consultative Committee walk on the Saturday before the Consultative Committee meeting. The route and agenda for the walks will link to the forward plan. In addition, I will make notes of the main issues discussed

on the walk and circulate this to both the Consultative and Management Committee promptly after the walk. These will be discussed and updates provided at the next scheduled walk. I will also use the Superintendent's update to provide further information on issues being raised on the walks.

### **Hampstead Heath Management Committee Minutes**

10. Going forward, it would be helpful if the Management Committee minutes recorded the consideration and response to the Consultative Committee's representations. In addition, the Town Clerk has also agreed to circulate a link to the Consultative Committee Members to provide access to the draft Management Committee Minutes, so Consultative Committee Members know what account was taken of their representations.
11. These proposals will ensure that the Consultative Committee remains well-informed and fully engaged, whilst ensuring that their representations are clearly communicated and considered by the Management Committee.
12. In November 2016, I will also discuss these proposals with the Highgate Wood Joint Consultative Committee and the Queen's Park Joint Consultative Group.

### **Open Spaces Bill**

13. The Bill passed its initial parliamentary stages without debate and awaits detailed consideration by a Commons Committee. It is not yet clear whether this will take place before or after the Summer Recess.
14. Two petitions were submitted against the Bill. The City Corporation successfully challenged one of the petitions before the Court of Referees (a group of MPs who assess the validity of petitions), on the grounds that it was not relevant to the Bill. The remaining petition is by the Kennel Club, and seeks the application of Freedom of Information law to the anti-social behaviour powers sought in clause 12 of the Bill. Discussions are taking place with the Club to see if its concerns can be addressed. If not, the Club's petition will be adjudicated on by the Commons Committee appointed to consider the Bill.

### **Hampstead Heath Management Plan**

15. Work on the management plan is progressing in accordance with the programme outline which was presented to Committee in March 2016.
16. Stage 1, the Review Stage, has commenced involving consultation with staff to capture achievements and progress made towards the actions and goals set out in the 2007 Plan. This work is currently being summarised into a progress report.
17. To ensure continuity, past members of the working groups who were involved in developing the 2007 Plan are invited to participate in a workshop to review the current management plan. The group will capture insights from the review of progress and discuss lessons learned over the past decade.

18. These will inform recommendations around the five themes for the development of the 2018 Plan:
- **Progress** - measuring progress and achievements to date;
  - **Structure** - reviewing the structure of the plan and associated framework for delivery;
  - **Relevance** - refreshing the objectives, actions and goals to ensure relevance in the current and future contexts;
  - **Engagement** - fostering a spirit of shared stewardship;
  - **Evaluation** - adopting an outcomes-based approach to underpin a framework for monitoring and evaluation.
19. Workshop details are currently being finalised.
20. Following the Management Plan Review workshop, a report capturing achievements, lessons learned and recommendations will be prepared, with a report to the Consultative Committee in November 2016.
21. During the autumn the Project will move forward into Stage 2 - Defining Success. This will involve a programme of activities on the Heath throughout autumn which will engage with Heath users and the wider community to capture community aspirations for the Heath now and into the future.
22. Project stages and reporting milestones;

Project Stage	Milestones for reporting to Committees	Report to Committee
1. Review	Report summarising achievements of the past decade	November 2016
	Proposals for management framework and recommendation for 2018 Plan	
2. Defining Success	Report on community engagement and proposed vision for the Heath	March 2017
3. Developing the 2018 Plan	Draft 2018 Plan	July 2017
4. Finalising the 2018 Plan	Report on consultation on proposed 2018 Plan and recommendations	March 2018
	2018 Plan submitted for approval	

### Property update

23. Hoarding has been removed from around the Lido, and the palisade fence installation has been completed and the utility services have been reinstated. The Heath team have recently planted a mixed species native hedge around the perimeter wall of the Lido.
24. Following recent surveys the City Surveyor is working with a Consultant to design a solution to the surfacing and drainage issues at the Kenwood Nursery Yard. This was discussed at the June Consultative Committee walk.

## **Planning**

25. Athlone House – The Superintendent made arrangements for the applicant to present the proposals to the Consultative Committee on the 30 June 2016. A planning application has now been submitted to the London Borough of Camden on the 1 July 2016. The proposed work involves the restoration and extension of Athlone House for use as a 6 bedroom single dwelling house; creation of a new vehicular/pedestrian entrance from Hampstead Lane and associated part demolition of boundary wall; refurbishment and extension of Caen Cottage and refurbishment of the Gate House, both to be used as ancillary residential accommodation; erection of a summer house on disused tennis court within the grounds; and associated landscaping works and restoration of historic garden.

## **Open Spaces Learning Team**

26. The Learning Programme has developed a new operating model and was successful in securing £400,000 over 3 years from City Bridge Trust. The new operating model has provided a strategic focus for learning through creating a single programme of work managed at a Departmental level. Through this operating model, the programme will be able to deliver increased opportunities for learning, volunteering and play across all the open spaces.
27. Recruitment of the new team across the Department has been the main focus of the programme between January - March 2016 and appointments have been made to all roles based on Hampstead Heath. A variety of internal and external appointments has resulted in a very high calibre team with a variety of specialisms, experiences and skills.
28. The Team is currently focused on developing more detailed project plans, engaging with the local communities we aim to work with, and developing the evaluation and monitoring framework. On Hampstead Heath, the Learning Team will be delivering:
- New natural play based sessions at the Clubhouse (previously the Adventure Playground) to help build understanding and confidence for young people.
  - New natural play based sessions at the One O'clock Club to support under-5's in developing confidence and wellbeing outdoors.
  - High quality sessions to primary schools at the Education Centre to increase understanding of our open spaces.
  - New curriculum focused sessions to engage with secondary schools to increase knowledge and involvement with our open spaces.
  - Successful 'Ponds Education Project' sessions to contribute to the knowledge of our open spaces.
  - New 'wild play' sessions on the Heath aiming to engage under-5's and their parents with the natural environment through developing confidence and connection with both parents and their children.

- New work with young people on skills development, increasing involvement and connecting with nature.
29. The new programmes at the Clubhouse and One O'clock Club were launched in the May half term and school sessions continue at the Education Centre. Our new wild play sessions and work with young people will begin in the summer holidays and autumn school term respectively.

### **Benches**

30. Work on the memorial bench project continues with mapping completed across Parliament Hill Fields, Golders Hill Park, Heath Extension, Vale of Health and East Heath.
31. Work has commenced on updating records and contact details for memorial benches, with historic paper records being transferred to a bench sponsorship database.
32. The memorial bench scheme on the Heath continues to be oversubscribed with the waiting list currently containing 115 requests for a memorial bench with a waiting time of up to 10 years.
33. While the work continues, the Superintendent is proposing the waiting list is closed pending a more detailed report and recommendations to the Consultative Committee in November 2016.

### **Conservation**

34. The Landscape Improvements to the Swains Lane entrance have been completed.

### **Events**

35. The main events during the period have been the Affordable Art Fair and GROW London both on the lower fairground site. Initial feedback from the organisers was the combination of the football, referendum and weather impacted on attendance; we will await a full report on the outcome and proposals for 2017.
36. Race for Life will return to the Heath for the 16<sup>th</sup> run on the 9 July. This popular 10k run is well organised and uses surfaced paths across the Heath. This is followed by the annual "Give it a go" event on the 17 July. This event is run in partnership with the London Borough of Camden and aims to promote health and wellbeing, offering opportunities for families to try out a range of different sporting activities for free.

### **Highgate Wood**

37. For the first time in over twenty years Highgate Wood has a pair of kestrels raising a family in one of the Conservation areas.



38. The 'Canopy Stair' event held at the end of May consisting of a temporary spiral stairway installed on one of the field oaks was a great success attracting over 500 visitors.
39. The project to install electric gates at Onslow Gate is now underway.
40. The earlier closing times have been successfully implemented with very little negative feedback from the public.
41. The Highgate Wood Team are monitoring the oaks for signs of Oak Processionary Moth.

### **Queen's Park**

42. Two new items of trim trail equipment have been installed on the old petanque rink; both items are being well used by visitors.
43. A number of events have taken place in the park over the last few months. These have included the Open Gardens Open Studios events in the Queen's Park ward and a performance of the Shakespeare play, 'Much Ado About Nothing' in the Quiet Garden. The Regent Community Brass Band will be performing on a number of dates on the Bandstand over the summer months.
44. The Park Manager is consulting with users and non-users on future events in the park. The results will be discussed with the Consultative Group in November.

### **Projects**

45. The Superintendent will provide an update on current Projects.
  - Sports Review
  - Working Arrangements

### **Bob Warnock**

Superintendent

Open Spaces Department

T: 020 7332 3322

E: [bob.warnock@cityoflondon.gov.uk](mailto:bob.warnock@cityoflondon.gov.uk)

This page is intentionally left blank

<b>Committee(s)</b>	<b>Dated:</b>
Hampstead Heath Consultative Committee – For Discussion	27-06-2016
Hampstead Heath, Highgate Wood and Queen’s Park Committee – For Decision	18-07-2016
<b>Subject:</b> Cross country pilot on the Hampstead Heath Extension	<b>Public</b>
<b>Report of:</b> Superintendent of Hampstead Heath	<b>For Decision</b>
<b>Report author:</b> Declan Gallagher, Open Spaces Department	

## Summary

This report sets out a request, received from London Heathside to use the Hampstead Heath Extension, for a young athletics cross-country race in 2016/17.

Following collaboration between London Heathside and Officers from the City of London Corporation a proposal and race route, which meet the guidance set out in the Hampstead Heath Management Plan has been draw up.

## Recommendations

It is recommended:

- That the views of the Hampstead Heath Consultative Committee are received on the proposal to hold a pilot event at the Heath Extension in the 2016/17 season, as set out in Option A.
- That the Hampstead Heath, Highgate Wood and Queen’s Park Committee approve the proposal to hold a pilot event at the Heath Extension in the 2016/17 season, as set out in Option A.

## Main Report

### Background

1. Hampstead Heath hosts a number of cross-country running events throughout the year, these range from small local races to large Southern and National events. In addition, the Heath hosts the Camden School Association cross-country event and a weekly 5K Parkrun.

### Current Position

2. At the Hampstead Heath Sports Advisory Forum (HHSAF) meeting on 02-02-16, it was agreed that the Operational Services Manager would meet with members of London Heathside on site to discuss the possibility of holding a young athletics

cross-country race in the 2016/17 season. A site meeting took place on 30-03-16, and following this a proposal and race route was circulated by London Heathside to the HHSFAF on 09-05-16.

3. At the HHSFAF meeting on 16-05-2016 constructive discussion and debate took place regarding the proposal. The HHSFAF were supportive of a pilot event taking place on the Heath Extension, subject to a route being identified that met the guidance set out in the Hampstead Heath Management Plan, and which was agreed on by both the Hampstead Heath Consultative Committee and Hampstead Heath, Highgate Wood and Queens' Park Committees.
4. The Hampstead Heath Management Plan 2007-17 had designated three sports areas: Parliament Hill (Sports Area A), a section of the Heath Extension (Sports Area B) and the northern side of Golders Hill Park (Sports Area C) (see Appendix 2).
5. The Management Plan sets out 8 criteria which must be fulfilled to allow sport to take place outside of the designated sports areas:
  - i. The new sport or relocation of an existing sport is recommended by the Sports Advisory Forum following an assessment of perceived demand.
  - ii. The sport cannot be accommodated within one of the Sports Areas.
  - iii. There is no significant detriment to the general public's enjoyment of the Heath.
  - iv. There is no significant threat to the natural Heath.
  - v. The practice of the new sport or new location does not expose the City of London to a material risk of criminal or civil liability, and is permitted by the City's insurers.
  - vi. The adverse impact, if any, on established informal sport in the relevant area must be outweighed, in the view of the Sports Advisory Forum, by the demand for, and public benefit of, the new or relocated sport.
  - vii. It is consistent with good turf management practice.
  - viii. No permanent structures are needed by the sport in question.
6. The proposed cross-country route is not contained within the footprint of the designated sports area on the Heath Extension. The southern part of the route does not meet criteria iv (above), as it passes through an area of species-rich grassland (see Appendix 4) containing for example, lady's bedstraw, musk mallow and meadow brome. Combined with other plants present, such as black knapweed and ox-eye daisy the area provides important habitat for butterflies, bees and other invertebrates.

## **Proposals**

7. Part of the area crossed by the proposed route is used for a long-term experiment looking at different cutting regimes in order to assess which is best for

nature conservation. A cross-country run over this area will negatively impact upon this experiment. The proposed route will also have an impact on various trees at the northern end of the course. Heavy footfall will lead to compaction and possible direct damage to surface roots of the adjacent trees.

8. The Operational Services Manager and the Highgate Wood, Conservation and Trees Manager have put forward a slight amendment to the proposed route that will ensure there is no permanent damage caused to the Heath Extension. The new revised route will utilise the cricket outfield, football, rugby pitches and bridle way, avoiding the species rich grassland and impact on tree roots (see Appendix 3, and 4).

## Options

9. Option A – Members are asked to consider holding the event on the Heath Extension as a pilot, using the route identified in Appendix 3 that will ensure no permanent damage is caused to the Heath Extension. **This is the preferred option, and is supported by the HHSAF.**
10. Option B – Members are asked to consider adding the event, as an additional cross country race on the main body of the Heath, using an established course taking into account the capabilities and requirements of young athletes.

## Corporate & Strategic Implications

11. The event supports The Corporate Plan 2015-19 KPP4 *“increasing the outreach and impact of the City’s cultural, heritage and leisure contributions to the life of London and the nation”* / draft Open Spaces Business Plan 2016-2019 key action *“improve the health and wellbeing of the community through access to green space and recreation”* / draft Open Spaces Sport and Physical Activities Framework *“encourage participation in formal and informal recreation to enable healthy and active lifestyles”*.
12. The Sports chapter of The Hampstead Heath Management Plan: Towards a plan for the Heath 2007-2017 sport overriding objective states to *“Work collaboratively in maintaining and developing the existing sports facilities and activities in response to changing demands ensuring appropriate provision for all sections of the community”*.

## Implications

13. Athletes and spectators will be encouraged to use local transport to travel to the venue, as there is limited adjacent off street parking, as to not impact upon neighbouring residents.
14. Refreshment arrangements will be provided by the event organiser and will be removed from site at the earliest opportunity after the event.

15. There may be temporary damage along the edge of the football and rugby pitches and reasonable contributions for any restoration works required following the event, will be met by the event organiser.

16. The City will enter into a licence agreement with the event organiser.

## **Conclusion**

17. Careful monitoring will be under-taken to ensure that the Heath landscape and wildlife are protected, and that local residents and Heath users are not unnecessarily impacted upon.

18. It is widely acknowledged that Hampstead Heath is the home of cross country running in England. This event will contribute to the health and wellbeing of younger cross-country runners.

## **Appendices**

- Appendix 1 - Proposal from London Heathside to use the Hampstead Heath Extension for a young athlete's cross-country race in 2016/17
- Appendix 2 - Hampstead Heath Management Plan – Sports facilities & Areas
- Appendix 3 - Amended cross-country route
- Appendix 4 - Hampstead Heath Management Plan – Broad Habitat Types

## **Background Papers**

- Hampstead Heath Rugby Club request for a third rugby pitch:- Hampstead Heath
- Consultative Committee, (03-11-2016) and Hampstead Heath, Highgate Wood and Queen's Park Committee, (24-11-2014).

## **Declan Gallagher**

Operational Services Manager - Open Spaces

T: 020 7332 7331

E: [declan.gallagher@cityoflondon.gov.uk](mailto:declan.gallagher@cityoflondon.gov.uk)

## Appendix 1

### A proposal by London Heathside use the Hampstead Heath Extension

Cross country running and racing has seen a substantial growth in competitors over the past five years as evidenced by the size of the fields in both the Southern and National Championships held on Parliament Hill. There is a need to diversify the number of available courses to ensure that the existing courses in London are not over used.

Hampstead Heath Extension is potentially a very popular venue considering its location, existing facilities and its existing designation as a sports area.

The proposal is to run a test event during the 2016/17 cross country season involving the North West Young Athletes League (est. circa 50/55 years) for young athletes aged 10-16. The format at a league match is as follows

Race	Average no of competitors	Course length
U11 girls	50	1500m
U11 boys and U 13 girls	120	2000m
U13 boys and U15 girls	60	3000m
U15 boys and U17 girls	40	3800m
U17 boys	20	4700m

The competing clubs include:

- Cookham AC
- Dacorum and Tring
- Ealing and Southall
- Harrow AC
- Highgate Harriers
- London Heathside AC
- Queens Park Harriers
- Shaftesbury Barnet Harriers
- Thames Valley Harriers
- Trent Park Running Club

A map showing the proposed course is attached. The exact start/finish and loops used for each of the races to be decided after consideration of this proposal.



NORTHERN  
END

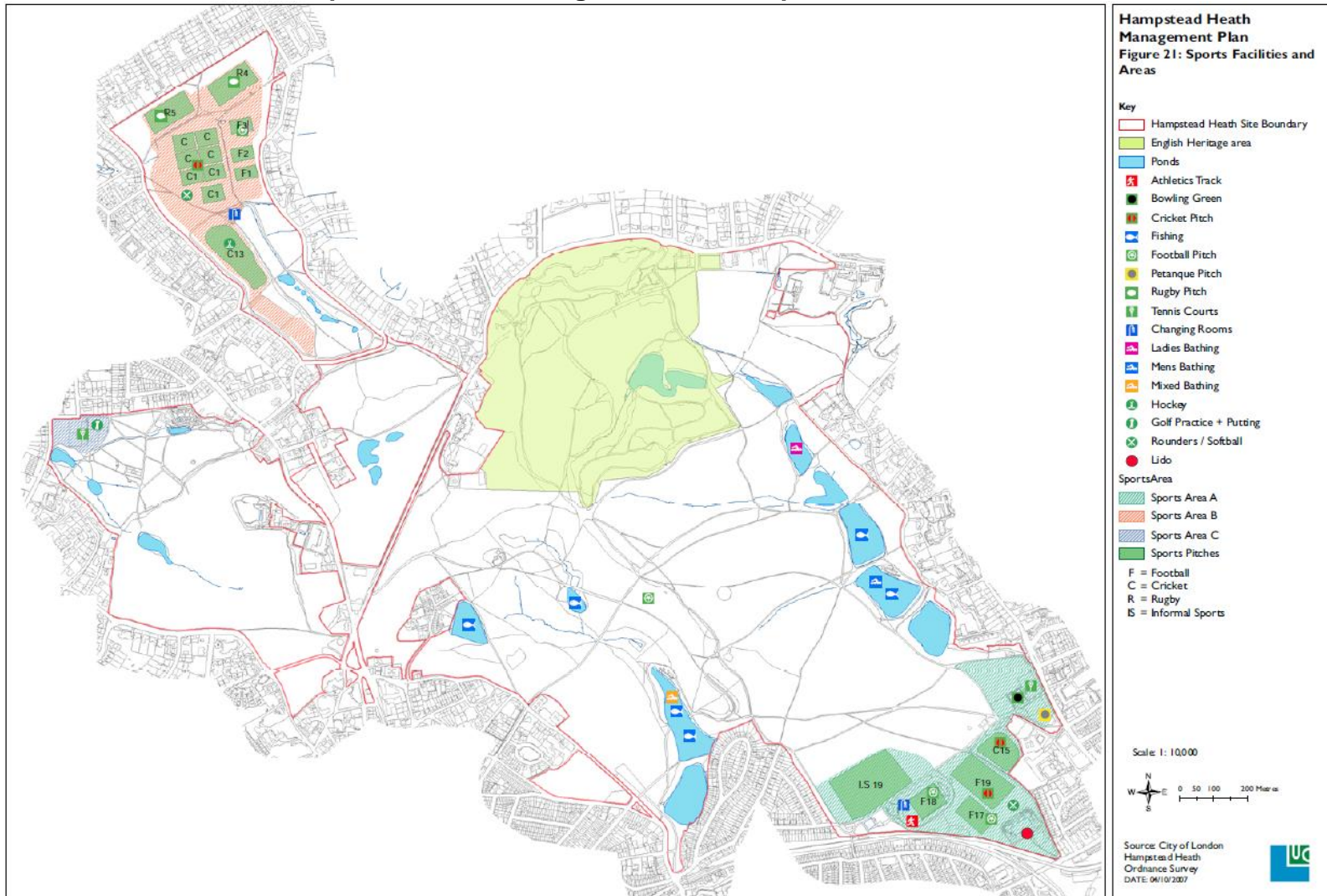
TAKE CARE  
TO STAY OFF  
THE EXISTING  
PITCHES

This part of the riding track  
is badly maintained and so  
may need to run on the field  
for this portion

Southern end of course to  
use the riding track



## Appendix 2 Hampstead Heath Management Plan – Sports facilities & Areas



Appendix 3  
Amended cross-country route incorporating Bridle Way





# Appendix 4 Hampstead Heath Management Plan – Broad Habitat Types

Page 47



**Hampstead Heath  
Management Plan**  
**Figure 18: Hampstead Heath  
Broad Habitat Types**

- Key**
- Hampstead Heath site
  - x boundary Scattered scrub
  - Scattered trees
  - +— Defunct hedge
  - Hedge with trees
  - Hedge without
  - trees Heather
  - planting Buildings
  - Amenities or improved
  - grassland Bare ground
  - Coniferous
  - woodland
  - Continuous scrub
  - Marsh / marshy
  - grassland Open water
  - Semi-natural broad-leaved woodland
  - Species-poor semi-improved grassland
  - Species-poor unimproved grassland (acid and neutral types)
  - Species-rich semi improved
  - grassland Tall ruderal
  - Acidic flush

**Note:** These habitats have been mapped from aerial photographs, previous surveys and ground truthing.



Scale: 1: 15,000



Committee(s):		Date(s):
Hampstead Heath Consultative Committee	For Discussion	27 June 2016
Hampstead Heath, Highgate Wood and Queen’s Park Committee	For Decision	18 July 2016
Subject: Management Work Plan for Small Tumulus Field		Public
Report of: Superintendent of Hampstead Heath		For Decision
Report Author: Meg Game, Ecologist		

## Summary

This report presents a detailed work plan for managing Small Tumulus Field, one of the ecologically most interesting of the Parliament Hill fields. Suggested long-term management includes creating and maintaining varied scrub habitat by rotational coppicing of selected bramble and tree saplings. Several potentially invasive native plants are present and these will be managed. The most troublesome is common hogweed; monthly mowing has not stopped it spreading, and an alternative approach will be tried.

## Recommendation(s)

It is recommended that:

- The Hampstead Heath Consultative Committee be invited to submit their views on the management plan for this area of the Heath.
- The views of the Hampstead Heath Consultative Committee be conveyed to the Hampstead Heath, Highgate Wood and Queen's Park Committee.
- The Hampstead Heath, Highgate Wood and Queen's Park Committee agree the proposals, set out in Appendix 1 of this report.

## Main Report

### Background

1. Management Work Plans review the history and ecology of specific parts of the Heath and detail the management required to maintain and improve the area concerned. This is the fifteenth such plan to be produced, and covers Small Tumulus Field, opposite the Men's Pond in Parliament Hill Fields.

## **Current Position**

2. Small Tumulus Field is ecologically one of the most interesting of the fields in the Parliament Hill area, being important for birds, probably invertebrates, and flora to a lesser extent. It is flanked on two long sides by Hedges 1 and 2, and the bushy edges of these form unusually good scrub and 'woodland edge' habitat, where there is a gradation from trees to scrub to long grass. Such habitat provides the vegetation and vegetation structure required by many of our smaller birds for feeding, nesting and roosting. Patches of bramble within the Field add to the important structural variety.
3. Although not rich in flora, Small Tumulus Field contains a greater diversity of plants than many of the Parliament Hill Fields. The sward does include several invasive species, most of them native, such as creeping thistle and ragwort. These too can be ecologically important, e.g. providing nectar for bees and butterflies, but can dominate other vegetation if not managed. The most troublesome of these is common hogweed which, despite attempts to control it, is spreading quite rapidly.

## **Proposals**

4. The plan details the tasks required to maintain the field, such as grass mowing and cutting back invasive plants. It also describes management which is needed to stop the valuable scrub habitats turning into woodland and to increase their structural diversity. This includes coppicing or removing tree saplings and several small trees, and cutting bramble on a long rotation.
5. Appendix 1 to this report presents the proposals in full. Figures 3 and 4 in the plan display a visual summary of the suggested work.

## **Implications**

6. The City has a legal duty under the Hampstead Heath Act 1871 to maintain the natural aspect of the Heath. There is a reputational risk in not pro-actively managing the natural aspect of the Heath. Left unchecked the mosaic of diverse habitats for which the Heath is renowned would be lost.
7. Activities included within the management work plan will be undertaken using the Heath local risk budgets.
8. The proposals link to the theme in the Community Strategy to protect, promote and enhance our environment. They also link to the Open Spaces Department Plan through the Strategic Aim to 'adopt sustainable working practices, promote the variety of life (biodiversity) and protect the Open Spaces for the enjoyment of future generations', and the Improvement Objective to 'ensure that measures to promote sustainability and biodiversity are embedded in the Department's work'.
9. These works also fulfil Essential Actions in the Part 1 Management Plan, including to retain and enhance the Heath's habitats and natural resources to enable continued quiet enjoyment and appreciation of the natural world by its visitors.

## **Conclusion**

10. A ten-year work plan is presented for Small Tumulus Field. The tasks required to maintain and enhance the area for ecology and enjoyment of the natural world will feed into the annual work programmes for the appropriate years. Management work plans are subject to review at the end of the 10-year period and sooner if unforeseen events occur.

## **Appendices**

- Appendix 1 – Small Tumulus Field Management Work Plan

**Meg Game**  
**Ecologist, Open Spaces Department**

**T: 020 7332 3322**  
**E: [meg.game@cityoflondon.gov.uk](mailto:meg.game@cityoflondon.gov.uk)**

This page is intentionally left blank



## Appendix 1

### Small Tumulus Field Management Work Plan



# Small Tumulus Field Management Work Plan

## 1. Site description

### 1.1 Location

Small Tumulus Field is one of the Parliament Hill Fields and lies to the west of the Men's Pond. Its location is shown in Figure 1.

### 1.2 Geology, Soils, Hydrology

The field is flat at the high western end, but then slopes down to the main path by the Men's Pond. The lower half lies on London Clay, the upper part on Claygate Beds, a mixture of clay and sandier deposits. A wide area at the bottom of the path, which is regularly mown grassland and is not included in this management plan, is very damp, but the rest of the field is drier; cracks can open in the clay in dry seasons. However, there is a wet seep not far from the high south-west corner which causes damp ground locally.

### 1.3 Ecology

#### Habitats and flora

Figure 2 provides an over view of the habitats of Tumulus Field.

The rough grassland which comprises the bulk of the Field is dominated by quite a range of common grass species, including bents, red fescue, timothy, Yorkshire fog, meadow foxtail and false oat-grass. Of some interest is the small amount of sweet vernal-grass which, although common in the wider countryside in older fields, is not abundant on the Heath. Pignut grows near the edge of Hedge Three; unlike sweet vernal-grass, this is quite abundant on parts of the Heath but of more restricted distribution elsewhere; it is one of the characteristic species of Hampstead Heath. A third interesting plant in the Field is goat's-beard, which is uncommon on the Heath. There is also a small area of specie-rich grassland by a clump of bramble near the bottom of the Field. This relic of wild flowers sown following installation of a gas pipeline about 20 years ago includes cowslip, lady's bedstraw, ox-eye daisy and black knapweed.

The native wild flowers in the main grassland also include creeping thistle, ragwort and common hogweed. These are all valuable ecologically, but are invasive and can grow to large mono-specific clumps if not managed. A large and spreading area of common hogweed grows near the eastern corner of the Field, and is scattered and increasing elsewhere. The distribution of ragwort varies from year to year depending on the seasons and the amount of bare ground, but overall it too appears to be spreading. Creeping thistle occurs in patches, and is controlled to stop it spreading. There is a large patch of rosebay willowherb on the north side of the Field. This non-native plant is attractive, but can also be invasive, and the extent of the patch increased in recent years until half was cut in 2015.

Hedges Two and Three border Small Tumulus Field to the south and north respectively. Once true hedges, these are now belts of trees flanked by younger trees, shrubs and bramble. Management of the hedges themselves is not included here, but it does consider how to maintain and enhance the very important 'woodland edge' habitats which flank the hedges. A large area of bramble, scrub and trees of various ages in the south-west corner is well on the way to being woodland. There are also several isolated patches of bramble in the Field. The scrubby areas contain dog rose bushes, which stich up above the bramble and form song-posts for birds, especially whitethroat.

The Field also contains a group of trees, mostly pine, which gives the field its name as these resemble the group of trees on the Tumulus in the adjacent field. However, there is no mound beneath the trees here. The trees are of high landscape value but of relatively little ecological interest, and are not considered further here.

### Fauna

The Field supports a good range of bird life, particularly species which nest, roost and feed in scrub. Whitethroat regularly breed in the areas of bramble near Hedge Two, and the woodland edge is also frequented by blackcap, chiffchaff, dunnoek and the other birds which favour dense vegetation cover near the ground. This habitat, particularly that on the warm northern side of the field by Hedge Three, also attracts butterflies, bees and other invertebrates, and this is augmented by the nectar-rich flowers of the creeping thistle, hogweed and ragwort which grow in the field. However, the extensive patch of bramble at the north-west corner of the Field seems relatively little used by birds, possibly because it is too uniform in structure.

An uncommon spider, *Porrhomma campbellii*, was found near the wet seep in the late 1990s, when the area was more open and grassy,

## **1.4 Public and educational uses**

Small Tumulus Field is well used by the public, being relatively close to the main entrance to the Heath at Parliament Hill. It provides an attractive vista from the main path running past the Highgate Ponds, and its buttercups, patches of bramble and scrubby edges make it feel pleasantly rural.

## **1.5 History**

Small Tumulus Field was presumably grazed in the 18<sup>th</sup> and 19<sup>th</sup> century; the hedges were presumably traditionally managed to keep them stock proof at some period. But Hedges Two and Three appear as thin, gappy lines of trees in a photo of the late 1940s. This shows allotments to the north of the diagonal cross path and grassland to the south; there were playing fields on the flat top of the field, and at the bottom where there is now mown grass. Later on, the grass was regularly mown short when the Heath was under the control of the Greater London Council; this practice ceased in the mid or late 1980s.

A 1997 or 1998 air photo shows the Field as open and grassy; bramble or other scrub is beginning to increase in the south-west corner as well as lower down, near where there are now isolated patches of bramble. The 2013 air photo used in Figure 2 shows how this scrub had spread by then, and how the hedges have expanded naturally since the War.

Management over the past 10 years or so has concentrated, not always successfully, on controlling expansion of native but invasive species.

- The central triangle formed by the two diagonal paths has been mown annually to reduce the spread of creeping thistle, ragwort and hogweed.
- The dense hogweed patch near Hedge Two was mown monthly in 2013 and 2014, but this management was reduced to a couple of times in 2015 as the more frequent mowing was not found to be effective at preventing its increase. Hogweed is now cut shortly before it flowers. This treatment curtailed its spread in Pryors Field, but it is doubtful if it will here, where the soil is damper and more fertile. This remains a problem.
- Ragwort was pulled by corporate volunteers in 2013 and it was greatly reduced the following year. The reduction was unfortunately short-lived as no volunteers were available to repeat the pulling the following year.

- Patches of creeping thistle were topped or mown, reducing the density of this plant.
- In 2015 bramble, which was spreading into the grassland, was cut back in several areas.
- About half of the patch of rosebay willowherb was mown in 2015 with a view to restoring this area to grassland again.
- Detailed monitoring of the vegetation began in 2009, although was not carried out in 2015.

## **1.6 Natural and human-induced trends**

The main trend is the increase in native invasive species. Common hogweed is increasing rapidly, a trend also seen elsewhere on the Heath and perhaps due to climate change. Ragwort may also increase substantially if summers become hotter and drier. Bramble and creeping thistle can, when necessary, be controlled by mowing, but this is ineffective for hogweed and ragwort, and these are likely to spread further and become denser colonies.

## **2. Evaluation**

### **2.1 Natural landscape**

Small Tumulus Field is perhaps the most important meadow for biodiversity in the Parliament Hill area. It includes good scrubby 'woodland edge' habitats, which are rather underdeveloped elsewhere on the Heath: scrub is an exceptionally important habitat, providing nectar, seeds, fruits, shelter and nest sites for invertebrates, birds and small mammals. Notably, whitethroat breed here most years. The scrub and the grassland provide for small mammals, and kestrels are regularly seen hunting over the Field. The grassland itself contains several significant plant species, including pignut.

### **2.2 Public and educational uses**

The Field is very attractive, particularly in spring, and is seen by many of the Heath's visitors as they pass by on the main path up the Highgate chain of pond, or walk or jog through it. It is not particularly used for educational purposes.

### **2.3 History and built environment**

It is interesting to see how the Field has changed in the past couple of centuries, including major changes in management in the 20<sup>th</sup> century, transforming it from pasture to allotments and back to a natural-seeming meadow. Apart from this, Small Tumulus Field is not of particular significance historically.

### **2.4 Vision**

The vision for Small Tumulus Field is:

- To maintain approximately the current proportions of grassland and scrub/woodland edge habitat
- To maintain and improve the scrub and woodland edge habitat, for example by coppicing bramble, trees and shrubs on rotation and removing invading tree seedlings and suckers, as required to maintain a variety of structure
- To maintain the grassland through mowing, removing the arisings, as necessary to retain a grassy sward. Some areas will be cut annually, some on a longer rotation
- To allow some creeping thistle to flower and set seed but to prevent it spreading or becoming a monoculture

- To attempt control of other native and non-native invasive plants
- To monitor the area, especially invasive species

## **2.5 Relevance to achieving the 2007-2017 Hampstead Heath Management Plan**

Overriding Objectives, Essential Actions and Aspirational Goals from Part I of the Hampstead Heath Management Plan which are particularly relevant to the management of Small Tumulus Field include:

- |      |   |
|------|---|
| NL3  | Manage the Heath's grasslands to enhance their nature conservation and aesthetic value                              |
| NL4  | Manage the Heath's woodlands and scrub to enhance their nature conservation value and improve their distinctiveness |
| NL18 | Consider providing a substantial, undisturbed area of scrub and bramble on the Heath.                               |

The following policies from the Natural Landscape chapter of the Part II Management Plan for the Heath are particularly relevant to Small Tumulus Field:

- |           |  |
|-----------|--|
| Policy 1  | The Heath will be managed to maintain and preserve its unique wild and natural aspects and its ecology, and enable quiet enjoyment and appreciation of the natural world by visitors |
| Policy 4  | The existing areas of natural grassland will be managed to protect and enhance their nature conservation importance  |
| Policy 5  | The City proposes to retain grassland cover at roughly its present area  |
| Policy 6  | Grassland will not be allowed to revert to scrub or woodland   |
| Policy 20 | Woodland edge habitat, i.e. a gradation from trees or shrubs to long grass, will be encouraged   |
| Policy 33 | Woodland edge habitat will be maintained alongside hedgerows where possible. Management will normally entail rotational cutting or coppicing   |
| Policy 34 | the spread of scrub will generally be limited and will be managed to prevent it becoming woodland  |
| Policy 50 | Selected invasive and inappropriate species will be controlled.  |

## **3. Prescription and Work Programme**

Figures 3 and 4 show the location of the actions listed in the tables below.

### 3.1 Regular management tasks

See figures 3 and 4

Objective	Prescription	Frequency	Month(s)	Years	Priority
Maintain grass sward	Cut approximately 1/3 of grassland, excluding central triangle, on three-yearly rotation (fig. 3)	annually	June/July	all	high
Maintain grass sward	Cut bramble spreading into wild flower area near bottom of Field, leaving central patch (fig. 4)	annually	September/ October	all	high
Control ragwort, creeping thistle and hogweed	Mow most or all of large triangular area of grassland between paths before ragwort flowers, preferably leaving some unmown (fig. 3)	annually	June	all	high
Control creeping thistle	Cut most of thistle in large patch near Hedge 3 before it flowers, leaving some uncut for wildlife (fig. 3)	annually	June	all	medium
Control hogweed	Remove flowers from all hogweed plants outside areas to be cut and repeat when first re-flowering occurs	twice a year	May/June then again later	all	high
Improve and maintain edge habitats	Cut bays in bramble over 8 years and allow to regenerate. Leave perching posts where possible. Consider planting more dog rose to provide song posts. Recut every 10 years or as required (fig. 4).	As specified then about every 10 years	September (ground too wet later on)	2016, 2017, 2020, 2024 Then every 10 years	high
Improve and maintain edge habitats	Remove tree seedlings and saplings from in and along brambly edges as required (fig. 4)	1-4 years as required	October- February	2016/7 then as required	high
Improve and maintain edge habitats	Coppice selected lengths of woody edges of Field by Hedge 3 and repeat as required to maintain edge habitat (fig. 4)	1-10 years	October- February	2017 then every 5-10 years	medium
Improve and maintain edge habitats	Re-lay short but wide band of Hedge 3 to create better edge habitat (fig. 4)	every 7-10 years as required	October- February	2019 then as required	medium
Improve and maintain edge habitats	Coppice small oak near Hedge 2 (fig. 4)	every 7-10 years as required	October- February	2019 then as required	medium
Maintain variety of vegetation and vegetation structure	Consider cutting some sections of bramble in north-east corner of Field and allowing to re-grow, to create more structural variety (fig. 4)	Every 4 years	September	2016, 2020 etc.	medium

3.2 One-off tasks

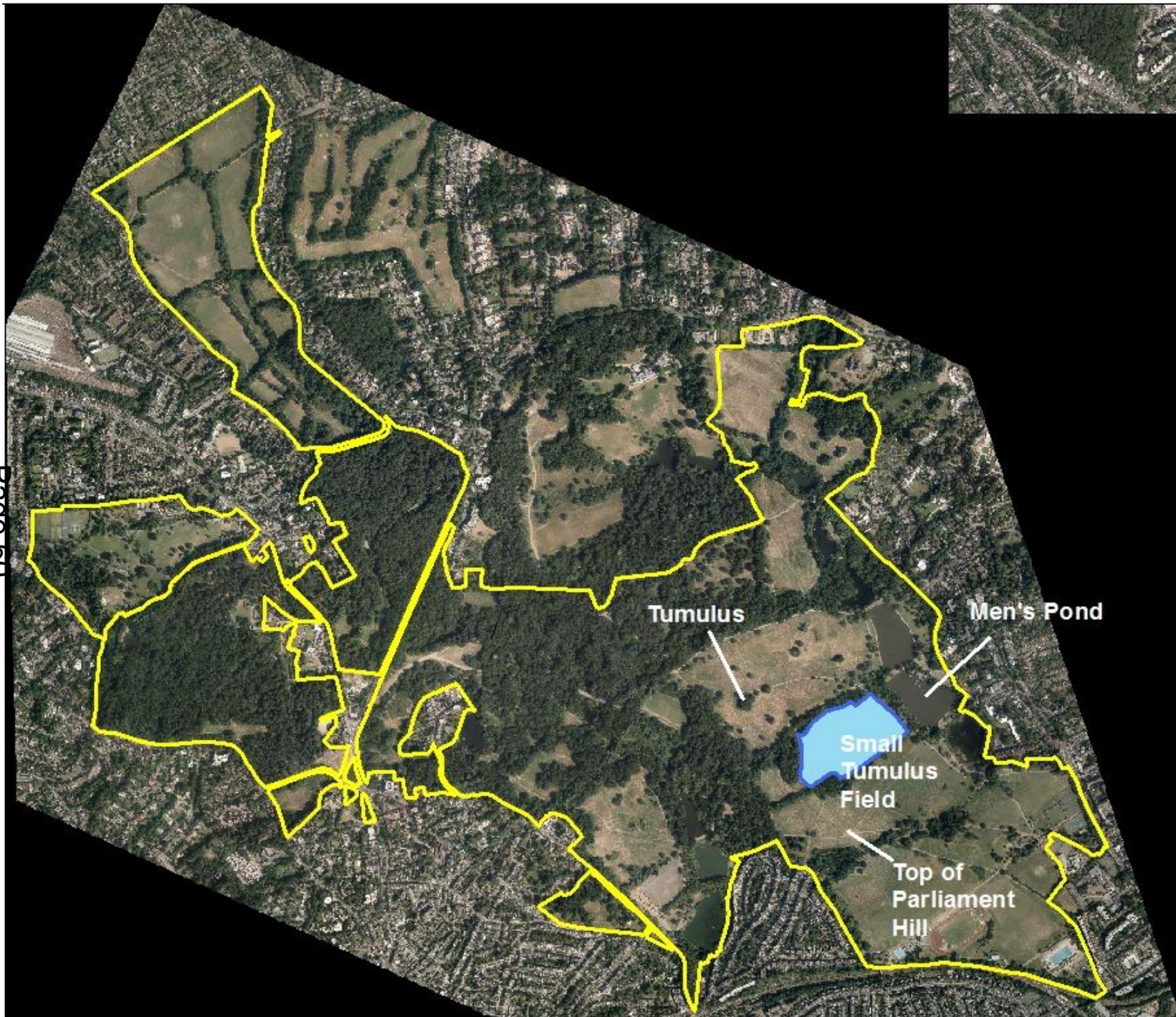
Objective	Prescription	Frequency	Months	Years	Priority
Restore grassland	Mow area of rosebay willowherb cut in 2015 until restored to grassland (fig. 4)	annually	June	2016 then until eradicated	medium
Improve and maintain edge habitats	Remove 2 immature ash trees in south-west corner of Field to reduce shade; leave logs lying in bramble (fig. 4)	once	October-February	2016	high
Improve habitat for fauna	Plant teasel in open area in bramble near Hedge 2 (fig. 4) and elder bushes among bramble edges	once	Winter/spring	2016	medium

4.0 Review

To be filled in as time goes by.

Author	Date	Task	Observation, event or alteration to task





# **Small Tumulus Field Management Work Plan**

**Figure 1  
Location**

- Hampstead
- Heath Boundary
- Small Tumulus
- Field

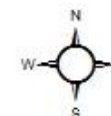
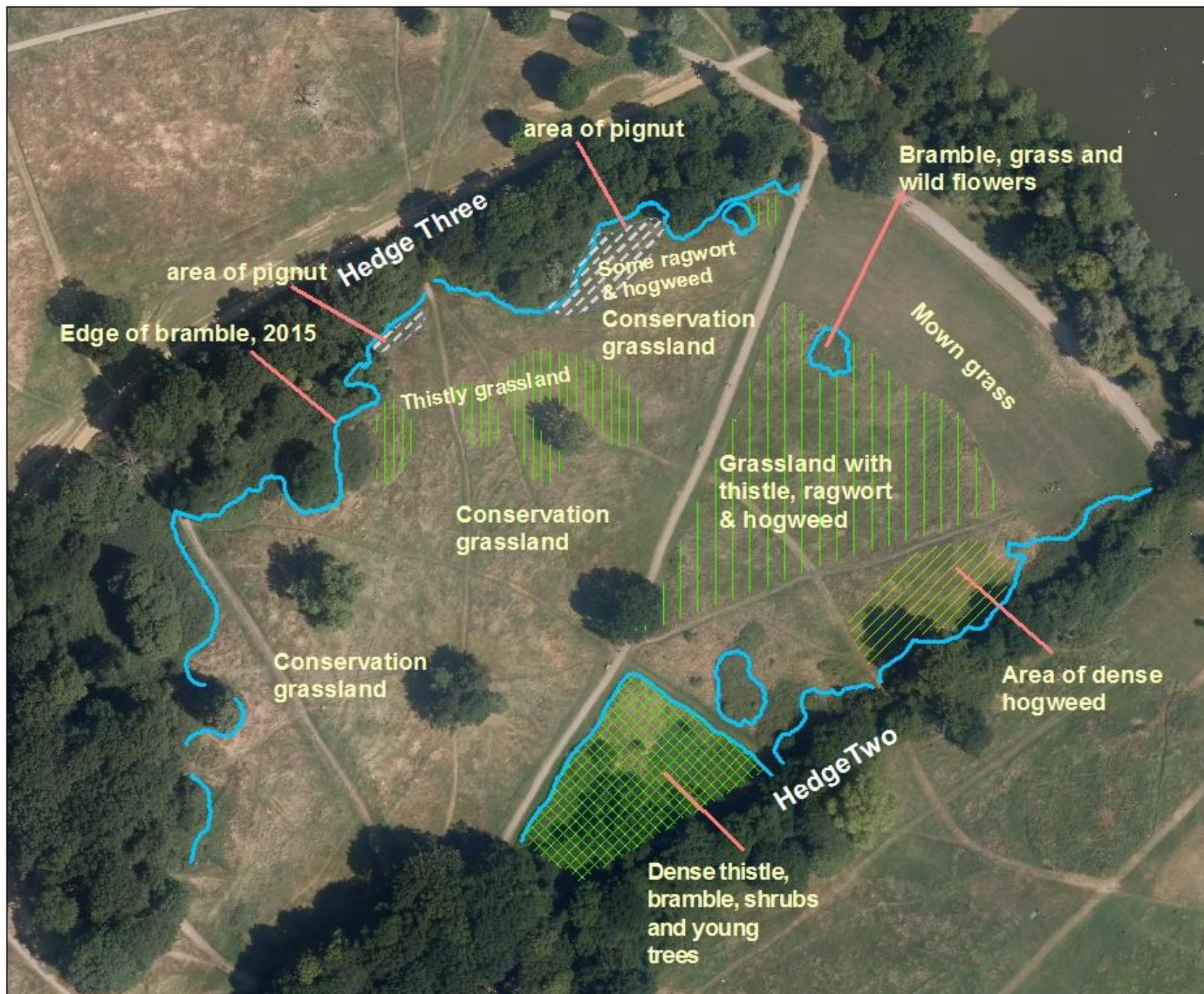
Created by:  
Meg Game

Date Created:  
12 May 2016



© GeoInformation Group 2013





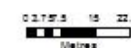
# Small Tumulus Field Management Work Plan

Figure 2  
Main habitats

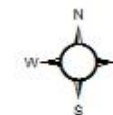
Edge of bramble and  
scrub in January 2016

Created by  
Meg Game

Date Created:  
19 May 2016







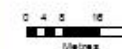
# **Small Tumulus Field Management Work Plan**

**Figure 3  
Grasscutting  
Regime**

**Numbers show  
year of cutting,  
in rotation**

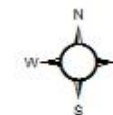
Created by:  
Meg Game

Date Created:  
12 May 2016



© GeoInformation Group  
2013





# **Small Tumulus Field Management Work Plan**

**Figure 4  
Management  
of  
bramble and scrub**

Created by:  
Meg Game

Date Created:  
19 May 2016



© GeoInformation Group  
2013

This page is intentionally left blank

<b>Committee(s)</b>	<b>Dated:</b>
Hampstead Heath Consultative Committee – For discussion	27/06/2016
Hampstead Heath, Highgate Woods and Queen's Park Management Committee – For approval	18/07/2016
Projects-Sub Committee – For approval	20/07/2016
<b>Subject:</b> Ponds Project Progress Report	<b>Public with non-public appendices</b>
<b>Report of:</b> Philip Everett – Project Director Bob Warnock – Superintendent of Hampstead Heath, Open Spaces	<b>For approval</b>
<b>Report author:</b> Jennifer Wood, Open Spaces Thomas Creed, Department of Built Environment	

## Summary

The Hampstead Heath Ponds Project is now 14 months into its 18 month programme. Seven out of twelve construction sites are now finished and the construction element of the project is due to be completed, on time, by the end of October 2016. Despite some delays, the project is now making good headway.

This report updates on progress, budget and the risk register.

Having already given the Heath staff a more active role in supervising the landscaping works, it was seen that there are a number of aspects of the reinstatement are well within the capabilities of the Open Spaces team and would benefit on the experience and expertise they have to offer. It has therefore been agreed with BAM Nuttall to remove some aspects of the reinstatement from their scope of works and allow the Heath staff to carry out the works instead. It is therefore proposed that a budget of £25,000 is separated from the main works budget to facilitate this.

## Recommendation(s)

Members are asked to:

- Note the report.
- Approve the reallocation of landscaping costs to be carried out by the Open Spaces team.

## Main Report

## Background

1. The Ponds Project was initiated following a series of hydrological studies which revealed that in the event of a severe storm, there was a risk that the reservoirs on Hampstead Heath could overtop, potentially leading to erosion and dam failure, putting lives, property and infrastructure at risk. Between 2012 and the summer of 2014, a highly iterative and consultative process was undertaken to consider the design criteria and approach, and then a wide range of options. In June 2014, an option for each chain of ponds was selected and approved on the basis that it satisfied the existing requirements of the Reservoirs Act 1975 and the anticipated requirements under the Flood & Water Management Act 2010, whilst preserving the natural aspect and state of the Heath in the most effective manner, in accordance with the City's duties under the Hampstead Heath Act 1871, and in accordance with the agreed design principles.
2. Following Committee approval in June 2014, a planning application was submitted to the London Borough of Camden in July 2014 and planning consent was granted by Camden's Development Control Committee, subject to Conditions and a Section 106 agreement, in January 2015. Construction work on the Ponds Project started in April 2015.

### **Construction progress**

3. Work is progressing well at all of the current construction sites. Members will recall that the design was such that there were two more substantial work sites in each chain of ponds (Model Boating Pond and the Catchpit), and these have seen the bulk of the work in the last few months as the weather has turned more favourable for earthworks. It is worth remembering that by planning the works in this way we have been able to keep the total area of the works to the minimum, as the total area of work compounds only accounts for approximately four per cent of the Heath in its entirety – 26 hectares are work sites and the Heath is 679 hectares in total. It will also be recalled that another principle of the Project was to find all the fill material from within the Heath (to minimise lorry movements), and this has meant the earthworks proposals have had to be managed throughout the project, as the exact volumes of cut and fill available became apparent.
4. This earthworks management has been particularly relevant at the largest of these work sites, Model Boating Pond, where the crest has been raised (2.5m taller than the original dam) using clay excavated from the hillside next to the pond. The dam is now at full height and excavations to form the new island on the western edge of the pond are well underway. The borrow pit in the work compound is being filled with silt excavated from other ponds in the chain, (Model Boating Pond, Stock Pond, Ladies Bathing Pond and Men's Bathing Pond) before being covered with first a layer of clay and then the original top soil on the top. Due to an overall shortfall of silt, an additional 3,000 m<sup>3</sup> of clay may be required to ensure the borrow pits are filled up to their original levels. However, the discovery that the large gas main which runs across the Heath was further away from the pond and would not be acting as a constraint to the restoration, means there is additional flexibility and the hillside will be able to be restored to a very similar gradient to the original, with the additional fill material being found by re-



contouring the hillside and also by making the channel around the island deeper on its northern side.

5. Another principle that has worked well was getting the contractor appointed early and in a contract form that encouraged collaboration. Our contractor, BAM Nuttall, has worked really well in this regard, sometimes having to deal with a client that changes details in the design at the last moment! A recent example of how this collaboration among the project team has worked has been in relation to the busy footpath between Men's Pond and Model Boating Pond, which can safely remain open to pedestrians while the dam construction work takes place alongside. This way of working has been adopted throughout the project, where paths have been locally diverted or kept open but narrowed in order to minimise disruption to Heath visitors. Much of the fencing around the work sites has been purposely installed as an open meshing which enables the site to be visible for the public's interest, and the workforce has been encouraged to answer questions from the public about what they were doing. This has received favourable comment.
6. Elsewhere on the Highgate Chain, works have been completed at Stock Pond, Ladies Pond and Bird Sanctuary, other than some environmental works (turfing, seeding and the like), and are in progress at Men's Bathing Pond and Highgate No. 1 Pond. The new Ladies Pond facility opened for swimming on programme on Saturday, 7 May 2016. By using a prefabricated building, the time between the arrival of the new building and its opening was 25 working days.
7. On the Hampstead Chain, the Catchpit dam is steadily growing towards its 5.6m final height with clay excavated from borrow pits on Pryor's Field. Work will continue here until late summer, after which planting and restoration of the borrow pit will take place. Works on the other ponds on this chain are almost all complete, except for some environmental works, and the desilting of the Viaduct Pond.

### **Environmental mitigation**

8. Upon completion of the construction works at each pond, environmental mitigation then takes place. All of this has been carefully considered by ecology experts with input from the Heath's own ecology team who have a wealth of knowledge on the Heath. Previous environmental works at Bird Sanctuary pond, which were part of the project, have been a success with the addition of a deep channel and wetland scrapes to help prevent the reeds from drying out and to provide additional habitat for birds, amphibians and invertebrates. Aquatic planting shelves are being constructed at several ponds and in total 25,000 new aquatic plants of 15 different species will be planted. This will result in an additional 1,700 cubic metres of aquatic planting which is an important habitat the Heath does not have in abundance.
9. Six hectares of wild flower meadow will also be sown by the end of the project with a seed mix specified by the Heath's ecology team. The location of these wild flower meadows is being specifically detailed in restoration plans which are being

drawn up for the larger areas disturbed by the construction. Although the construction element of the project is due to be finished in October 2016, some of the environmental works, such as the restoration of wild flower meadows, will take place after this time due to the seasonal nature of this work.

10. Desilting work, using a suction technique, has successfully taken place at four ponds, which includes all three bathing ponds. This work will improve water-quality and benefit aquatic life. Viaduct Pond will also be desilted as part of the project. At this pond, the debris will be excavated first from a floating platform, and it will then be desilted. The delay here has been because there was too much debris in the pond to use the suction method successfully on its own.
11. Changes to the design have happened at a number of sites, with 76 contract instructions since the project began. Many of these have been related to the sensitive nature of the Heath, and include changing path locations or construction methods due to proximity of trees, or indeed a single tree. The design is continually monitored on site and adapted to meet the requirements of the Heath.

### **Planning Conditions, Stakeholder Engagement and Communications**

12. An amendment to the original planning application was submitted in May 2016. This relates to a revised design of a small section of the end of the new wall at Highgate No. 1 Pond which is in private land. The design was altered in this location to meet the requirements of the landowners to minimise the impact to trees and to lessen the visual impact from the Heath. A separate application was required as the property is listed and in a Conservation area. The City Surveyors' Department are liaising with the land owner's solicitors to arrange access for the proposed works and to enter into a formal agreement for future maintenance/improvements access rights.
13. Part of Camden's conditions required a Community Working Group be established to monitor the progress of the project. This has largely replaced the group that we had set up, as it has some of the same members on it. This group have been holding evening meetings monthly since February 2015 and also take part in regular guided walks of the site. They monitor various aspects of the project, including complaints, environmental data, vehicle movements and the programme. Since April 2015, when the project began, there have been 60 written complaints. The members have been taken down into the 'hole' to inspect the base of the dam at Model Boating Pond, to the new ladies pond facilities and on top of the new dam at Model Boating Pond.
14. We have been clear throughout the project that our publicity must reach a variety of audiences through different media. Weekly emails with updates on the project are currently being sent to over 800 subscribers, while the Ponds Project blog regularly receives over 2000 visits per month and has received as many as 4,300 visits in one month. It can be found at <https://hampsteadheathpondsproject.wordpress.com>. Information signs are placed at each pond and BAM Nuttall have been praised on their positive interaction with the public over the project. A time-lapse camera was installed at



the Model Boating Pond. The live feed with a photo updated every four minutes can be viewed here: <https://timelapse.regenology.co.uk/api/embedded/m3m/>

## **Project Savings and Risk**

15. Before starting on site, one of the risks identified from the ground investigations was that there could be a considerable depth of clay near the surface of the borrow pits which would be 'weathered' and therefore not suitable for dam construction. This would result in this clay being excavated, stored and then re-instated in the borrow pits on completion of the dam construction works. An estimate of the depth of weathered clay was made from the information obtained from the borehole investigations and a risk sharing agreement was entered into with BAM Nuttall. This agreement shared any savings or additional costs associated with the double handling of this material.
16. At the Pryor's field borrow pit (being used to construct the Catchpit dam), it is expected that the level of weathered clay will be less than originally assumed. This, combined with the extremely good quality of the clay, has allowed a slight adjustment to the specification for placing the clay in the dam. It is therefore expected that this will translate into a saving to the Agreed Maximum Price.
17. Other project risks are continually monitored to reflect the changing status of the works on site. At the time of writing, the gross valuation of works completed is approximately 65% of the expected final cost, while 54% of the risk provisions have been realised (£473,245). An updated version of the risk register, including the current allocations of the specific risk provisions, is included in Appendix 1.
18. However, sitting outside of the specific risk provisions there are a number of larger issues which the project has had to deal with to date. These include the additional reinforcement needed in the temporary works at the Model Boating Pond, additional storage areas for silt drying and difficulties in de-silting the Viaduct Pond. Whilst the City's project team do not believe these costs sit with the City, there are on-going discussions with BAM Nuttall and the Partnering Advisor (an independent advisor, specified in the contract) as to how these risks are to be properly apportioned in accordance with the partnering contract. The outcome of these discussions will be reported back to committee once the contractual position has been confirmed. This may result in additional costs to the City at a later stage.

## **Landscaping and Re-instatement**

19. As the engineering work progress, focus is turning towards how the Heath will look on completion of the project, in particular the landscaping works. Having already given the Heath staff a more active role in supervising the landscaping works, it was seen that there are a number of aspects of the reinstatement are

well within the capabilities of the Open Spaces team and would benefit on the experience and expertise they have to offer.

20. It has therefore been agreed with BAM Nuttall to remove some aspects of the reinstatement from their scope of works and allow the Heath staff to carry out the works instead. It is therefore proposed that a budget of £25,000 is separated from the main works budget to facilitate this.

### **Ponds Project Education**

21. In the year or so since the Ponds Project Education Programme was launched we have engaged with 1437 Secondary School students over 60 education sessions and 763 Primary School pupils over 29 sessions. These figures put us ahead of schedule for Primary School targets and behind for Secondary School targets. However, we hope to begin to catch up in June and July, as these are our most popular months so far for session bookings.
22. In addition to this we have been exploring alternative ways to connect with secondary schools students. This has included running writing and art competitions, and nurturing partnerships with different organisations, like BAM Nuttall and Museum of London. These partnerships have allowed us to utilise a greater pool of expertise when developing new engagement activities. With BAM we ran a successful series of dam building activities at Hendon School during British Science Week. We are also in the process of developing a series of cross curricula activities with the Museum of London based around the River Fleet. We have just over a year of delivery time left on the Project, after which we will focus on developing resources that will be the lasting legacy of the education programme.

### **Financial Summary**

23. The project is on budget and there is potential for future saving from the risk sharing agreement on the depth of weathered clay (as discussed above). However, it should be noted that there are a number of outstanding items on which further advice is being sought as to how the partnering contract apportions the risk. This may result in additional costs to the City at a later stage.
24. A summary of the project finances are included in Appendix 2.

### **Conclusion**

25. The project is progressing well and the positive impacts of the project are becoming more apparent. The focus is turning to the reinstatement of the works and the legacy it will create.

### **Appendices**

- Appendix 1 – Risk Register (NON PUBLIC)
- Appendix 2 – Financial Update (NON PUBLIC)

Previous committee reports are available at: [www.cityoflondon.gov.uk/committees](http://www.cityoflondon.gov.uk/committees)

**Jennifer Wood**

Ponds Project Liaison Officer

T: 020 7332 3847

E: [jennifer.wood@cityoflondon.gov.uk](mailto:jennifer.wood@cityoflondon.gov.uk)

**Thomas Creed**

Engineer

T: 020 7332 3913

E: [thomas.creed@cityoflondon.gov.uk](mailto:thomas.creed@cityoflondon.gov.uk)

This page is intentionally left blank

<b>Committee(s):</b>	<b>Date(s):</b>
Hampstead Heath Consultative Committee Hampstead Heath, Highgate Wood & Queen's Park Committee	27 June 2016 18 July 2016
<b>Subject:</b> Habitat restoration of the Boating Pond and Tumulus Field	<b>Public</b>
<b>Report of:</b> Superintendent of Hampstead Heath	<b>For Decision</b>

## Summary

The Ponds Project has had a major impact on the Boating Pond and Tumulus Field. This document outlines restoration work which will be undertaken to create an attractive and ecologically more valuable landscape, and requests the Committee's opinions on a proposal to alter a proposed design change.

## Recommendation(s)

Members are asked to:

- Comment on the habitat restoration proposals
- Comment on a proposed change to the original plan regarding an edge profile.

## Main Report

### Background

1. Major work for the Ponds Project has been undertaken at the Boating Pond and Tumulus Field. The dam is being raised, and the shape of the pond and the profile of the adjacent slope to the west will both change. The new dam faces and several hectares of Tumulus Field will be covered in bare soil at the termination of the engineering works in October 2016. Restoration is required to create an attractive area in keeping with the landscape and ecology of the Heath.

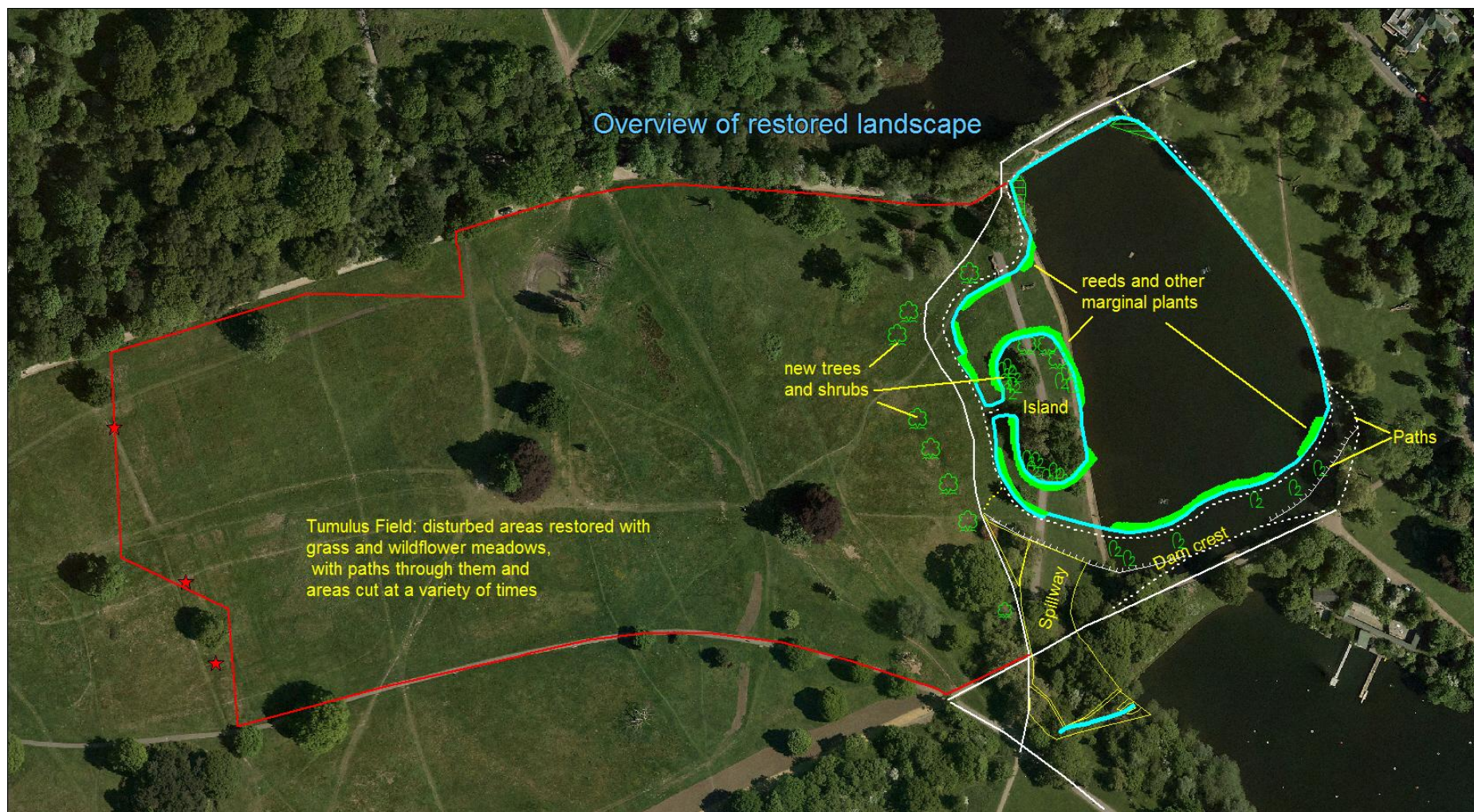
### The former landscape and ecology

2. Prior to the Ponds Project the Pond was roughly rectangular in shape, with vertical sheet-piled sides dropping straight into the water. Fish were (and still are) abundant, including large carp popular with anglers. There was no submerged or floating vegetation on the pond apart from occasional algal blooms, and marginal vegetation was limited to plants on rafts in and round the edges of the pond and two small reed beds. The pond was of relatively little ecological interest.
3. The affected part of Tumulus Field was covered in rough grassland. The sward was exceptionally poor in plant species and of little ecological interest.

## **The restored landscape**

4. The proposals for restoration are almost entirely as set out in the agreed plans for the Project (see figure 1 below). One detail of the design which it is proposed to modify is described below under Options.
5. The new dam will be covered in grassland containing some wild flowers, and will be mown several times a year. The pond itself will remain of a similar size overall, but will be a different shape from formerly and contain a tree- and shrub-covered island; paths will encircle the pond. The west and south edges will be lined with marginal vegetation; some of the plants will be tall-growing reeds, but others will be lower-growing, permitting views over them across the pond. The beds of marginal plants will be permanently fenced on the land-ward side and also possibly on the pond-ward side to prevent water birds grazing the vegetation.
6. Angling will be permitted at designated places along the new west and south sides of the pond. Details will be confirmed once a fishing policy for the Heath has been agreed.
7. The affected parts of Tumulus Field will be sown with seed mixes containing different mixes of native grasses and perennial wild flowers. Some areas will be just grassy, others will be dominated by grasses but also contain some wild flowers, and yet others will contain grasses but with a higher proportion of wild flowers. These latter should resemble the 'Sparrows' site above the running track at Parliament Hill. Paths will be mown through the area and the wild flower areas will be cut annually, not all at the same time.
8. The landscape will be more attractive than formerly. The edges of the water will be vegetated in place of stark vertical sheet piling. The dam will afford unrivalled views over the Boating Pond, ponds to the south, and in summer the flowery meadows of Tumulus Field.
9. The restored landscape will also be much richer ecologically. The marginal vegetation will improve water quality and provide wildlife habitat, including refuges for young fish. Tumulus Field will possess a richer flora and will be particularly valuable for bees, butterflies and other insects.
10. Appendix 1 to this report presents a habitat management plan for the pond and affected areas of Tumulus Field. Further design details can be found there.





Cities Revealed photography copyright  
The Geo-Information Group, 2020



Figure 1: Overview of restored Pond and affected parts of Tumulus Field

## Options

11. The plans show several sections of the pond edge which will front directly on the open water, i.e. will not be lined with marginal planting. These include four lengths where the bank is designed to slope directly down into the water. At two of these, along the dam front, the adjoining bed of the pond is to be covered in gravel, see figure 2 below.

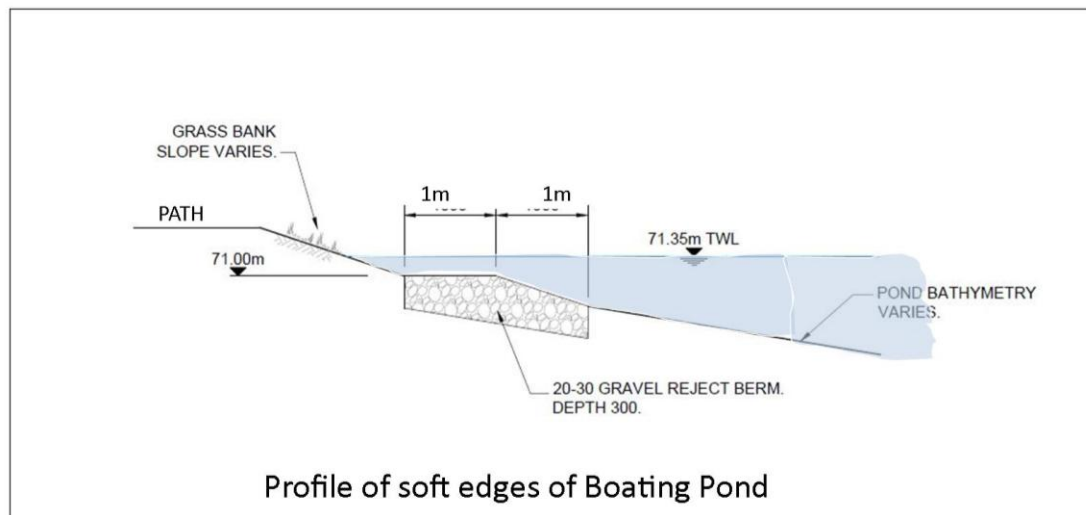


Figure 2: existing plan for unplanted margins of Boating Pond

12. These arrangements will tempt, in fact seemingly invite, people and dogs to enter the water here. This raises serious issues both of public safety and the protection of wildlife:
- Unsupervised swimming in the Heath's Ponds is prohibited and is dangerous; it resulted in a fatality at the Men's Pond in 2015. Wading in and even just paddling could cause serious injury from litter on the pond bed, such as broken glass.
  - On this chain of ponds, dogs are allowed into the water at Highgate no 1 pond. Unfettered access there resulted in conflicts with wildlife and reduced water quality, and it was found necessary to install unsightly barriers to prevent dogs getting far into the pond. Something similar might well be required here.
  - These gaps are the obvious places for angling, but there will then be a conflict between fishing, people and dogs.
  - The sloping edges of the pond are likely to become an unsightly muddy morass, as has happened elsewhere.
13. Regretfully, there are therefore several reasons for altering the design of these new soft edges to the Boating Pond, even though it seemed an attractive idea initially. It is therefore proposed to replace the open, gently sloping edges with a low vertical edge about 30cm high, secured with horizontal logs. This design



would not totally prevent people and dogs getting into the water, but at least should reduce them. It would provide a good base for angling.

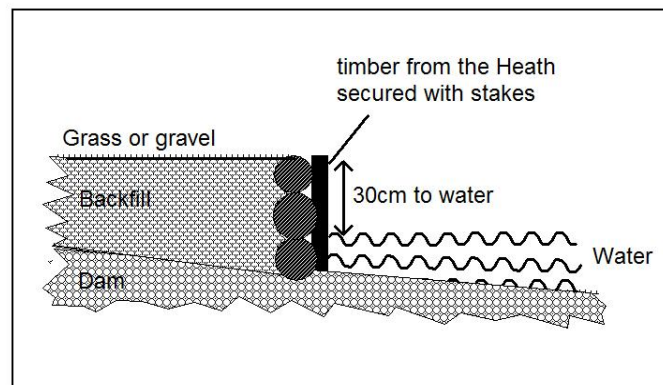


Figure 3: Proposed new design for unplanted margins of Boating Pond

14. The proposals for the restoration of the Pond and Tumulus Field, including the redesign of soft edges to a vertical profile, were presented to the Ponds Project Community Working Group at their meeting on 23 May 2016. The proposals were supported unanimously.
15. The Members of the Committee are requested to give their opinions on this proposal.

### Corporate & Strategic Implications

16. The work supports the City Together Strategy theme ... “protects, promotes and enhances our environment”.
17. It also links to the Open Spaces Department Plan through the Strategic Aim to “adopt sustainable working practices, promote the variety of life (biodiversity) and protect the Open Spaces for the enjoyment of future generations”, and the Improvement Objective to “ensure that measures to promote sustainability and biodiversity are embedded in the Department’s work”.

### Implications

18. The proposals will reduce safety risks associated with the original proposals for the Boating Pond.
19. The financial implications arising from this report will be funded from the Ponds Project Capital Budget.

### Conclusions

20. The proposals for restoring the Boating Pond will result in a ‘greener’ and less municipal looking pond, and sections of the adjoining parts of Tumulus Field will

be transformed into flowery meadows. There will be significant improvements to the ecology of the area.

21. A detail of the original plans would result in issues of public safety, conflict of use and damage to ecology. A modification is proposed.

### **Appendices**

- Appendix 1 – Management plan for the habitat restoration of Boating Pond and Tumulus Field.

### **Meg Game**

Ecologist, Open Spaces Department

T: 020 7332 3322

E: [meg.game@cityoflondon.gov.uk](mailto:meg.game@cityoflondon.gov.uk)

## **Appendix 1**

### **Management Plan for the habitat restoration of the Boating Pond and Tumulus Field**

May 2016

#### **Restoration of the landscape, 2016-2017**

1. The restored landscape, as shown on figures 1 and 2 at the end of the report, will consist of a large pond with a tree-covered island, bed of reeds and other wetland plants round the southern and western edges of the water, a mix of grassy and flower-rich meadows on Tumulus Field to the west, and a large grassy dam to the south. Paths will encircle the pond.

#### **The pond**

2. Vertical sheet piling will continue to form the eastern edge of the pond, but the edges of the pond elsewhere will be softer. Narrow beds of marginal vegetation will line much of the western and southern edges, as well as the island. These beds will be of reed; of reed and other marginal plants such as iris; or of marginal plants without reed. The beds will be permanently fenced on the landward side to prevent access to dogs, and temporarily fenced on the water side, although it may be necessary to retain the water-side fences for several years or even in perpetuity to maintain the vegetation: see below.
3. There will be several lengths of open, unvegetated bank (see figure 1) where it is proposed that there will be a 30cm vertical edge, secured with timbers, dropping into shallow water.

#### **The island**

4. The island will be accessible via a causeway. It will be surrounded by beds of marginal vegetation except at one point on the east side, where the original sheet piling will be retained. Besides the existing trees, four more trees and 12 shrubs will be planted. Any areas affected during the works will be re-sown with a seed mix containing grasses and wild flowers.

#### **The dam and spillway**

5. Six shrubs will be planted on the dam. Vegetation on the new faces of the dam and the spillway to the south will be established using pre-grown turf reinforced with a geotextile in the soil. The fences will be removed once the sward has established, which should be by spring 2017.
6. The Supervising Engineer has specified a species mix for the turf containing a high proportion of native grasses, with a small number of wild flowers. The dam will be subject to significant public pressure and in addition the Supervising Engineer has instructed that the dam and spillway be mown as often as

necessary to keep the sward to no more than 175mm high, although may be some latitude on the exact mowing regime. For these reasons the swards will become dominated by grasses, which can withstand such management, rather than wild flowers.

7. Wild flower turf will also be laid, and hard-wearing amenity turf on the face of the Bird Sanctuary causeway to the north, but both areas will be mown to keep the sward no higher than 175mm.

#### Tumulus Field

8. All areas of Tumulus Field disturbed by the works will be sown with mixtures of native plant seeds. There will be three different mixes: one containing just grasses, for heavily used areas; one containing grasses and low-growing wild flowers, for regularly used areas; and one containing a high proportion of wild flowers in the mix. Figure 2 below indicates where these three mixes might be applied, although the final plan will have to await until the new shape of the field has been created. Some areas in the works compound have not been stripped of top soil, for example along the route of a gas pipeline, and these will not be re-seeded or fenced except for any areas which have been affected by machinery. A temporary path through the area will be created along the route of the pipeline.
9. The seeded areas will be fenced until the sward is established, which is likely to take until summer or autumn 2017.

#### Paths

10. A hogg-surfaced path will encircle the pond close to the water line; from here the bank will mostly slope down to the beds of marginal planting. A hard-surfaced path will be laid about seven metres further up the slope on the western side of the pond, and there will be a footpath along the crest of the dam. The current path on the causeway between the Men's and Boating Ponds will be retained, but will then be half way up the south side of the new dam. In addition there will be two paths running east and west off the top of the dam; these will be of reinforced turf.
11. The island will be accessible via a hogg path on the causeway, but there will be no paths on the island itself.

#### Angling

12. Angling will continue to be permitted along the northern and eastern edges of the pond. There will be gaps left in the marginal vegetation along the new west and south sides of the pond and on the island, and some of these places will be suitable for angling.
13. Tables 1 and 2 provide a detailed list of tasks required for management of the area in 2016 and 2017.

## **Long term management**

14. The sward on the dam and spillway will be cut several times a year as necessary to keep it relatively short.
15. A network of informal paths will be mown through the new meadows on Tumulus Field. The most flowery areas will be mown once a year, but it not all at the same time; for example, some may be cut in June and some later on. The areas with lower-growing wild flowers will probably be cut about every other year, depending on requirements.
16. The grassland which was not stripped of topsoil and did not need re-seeding will be managed as before the Ponds Project by mowing annually or every two years or so, as required.
17. The small pond, Tumulus Field Pond, will continue to be fenced.
18. The Boating Pond itself should require relatively little management. Aerators in the pond will be turned on when there is a danger of algal blooms forming or a drop in oxygen levels occurring.
19. The water quality in the pond will be monitored regularly, and the composition of the flowery meadow will be monitored annually.
20. Table 3 provides a detailed list of tasks required for management of the area from 2018 onwards.

.

## Tables

The tables below set list the management tasks required to establish and maintain the pond and the areas of the compound. It assumes that the engineering works will be completed in October 2016, the marginal planting has been installed, the trees and shrubs planted, and the turfing and seeding undertaken.

Table 1: Management in 2016

Area	Task	Expected Timescale	Notes
Tree saplings planted outside compound	Water; replant if required; ensure they are protected from damage	June 2016 onwards as required	Planted by CoL autumn 2015 on former tree lines above upper compound and near cycle track
Areas near site	Cut thistle, ragwort and common hogweed to reduce seeding	June-September 2016	Especially areas nearby on Tumulus Field and possibly also Small Tumulus Field

Table 2: Management in 2017

Area	Task	Expected Timescale	Notes
11 trees and 21 shrubs	Water; replant as required; ensure they are protected from damage	All year	As required.
Pond	Monitor water quality regularly	Spring onwards	
Pond	Undertake a full baseline survey of water quality	2018 or soon afterwards	A full baseline survey would allow comparison of the water quality with conditions before the project.
Pond	Turn on aerator	Spring onwards	As required if oxygen levels drop
Fencing round turfed areas	Remove fencing round areas when the sward is established and ready for public access	Spring onwards	Turfed areas on the dam and spillway should established by spring 2017 from May onwards,.

Area	Task	Expected Timescale	Notes
Faces of Boating and Bird Sanctuary dam and Boating Pond spillway, including side slopes	Mow whenever sward reaches 175mm for dam, 150mm for spillway; possible late cut to 50-60mm	Growing season	Requirement of Supervising Engineer.
Narrow strip of turf between water and path, north and west of pond	Cut to say 50-100mm.	Spring onwards	As required
Seeded areas	Cut and remove arisings	Spring onwards	Required if growth strong or flush of weeds: probably required by summer if not earlier
Re-seeded areas	Control thistle, hogweed, ragwort, bramble and possibly other invasive species	May onwards	Extent of these remains to be seen. Small amounts can be controlled manually, but greater amounts may need herbicide treatment.
Areas of compound which were not stripped of turf	Cut to 50-60mm and remove	Summer	As required
Route of gas pipeline	Mow informal path along route of gas pipeline	April onwards	As required
Fencing round seeded areas	Remove fencing round areas when the sward is established and ready for public access	Summer or autumn	Timing depends on successful establishment
Fencing round marginal planting	Possible removal of waterside fencing	October	Review need to retain for longer before removal.
All reseeded and turfed areas	Monitor sward establishment; re-turf or re-seed if required	Spring onwards	

Area	Task	Expected Timescale	Notes
Informal paths on dam	Mow	Spring onwards	A cut will be required just before public access is allowed, and possibly thereafter depending on the amount of use
Tumulus Field area of compound	Mow informal paths through area	Summer/autumn	Once access is allowed, new informal paths need to be mown through the sward.
Marginal planting	Monitor establishment	October 2016 onwards	Any that fail to establish will need replacing
Turfed and seeded areas	Monitor sward establishment	October 2016 onwards	Any areas which fail to establish will need re-turfing or re-seeding

Table 3: Management in 2018 and thereafter

Area	Task	Expected Timescale	Notes
11 trees and 21 shrubs	Water	Spring onwards	As required until no longer needed.
Pond	Monitor water	All year	
Pond	Undertake a full baseline survey of water quality	Spring/Summer	A full baseline survey would allow comparison of the water quality with conditions before the project.
Pond	Turn on aerator	Spring onwards	As required
Dam faces and spillway, including side slopes	Mow whenever sward reaches 150mm (spillway) or 175mm (dam); possible late cut to 50-60mm	Spring onwards	Requirement of Supervising Engineer
Narrow strip between water and path on north, west and south sides of pond	Cut.	Spring onwards	As required



Tumulus field areas	Cut and remove	May onwards	Mow paths as required. Cut other areas at differing times; specification to be drawn up one planting plan has been agreed.
Fencing round wetland planting	Possible removal of waterside fencing of marginal planting	As required	Review need to retain for longer before removal.
All reseeded and turfed areas	Monitor sward	Summer	
Wetland planting	Monitor	Spring on	

**Figure 1: Overview of pond, showing paths and marginal planting**

Cities Revealed photography copyright  
The Geo-Information Group, 2020

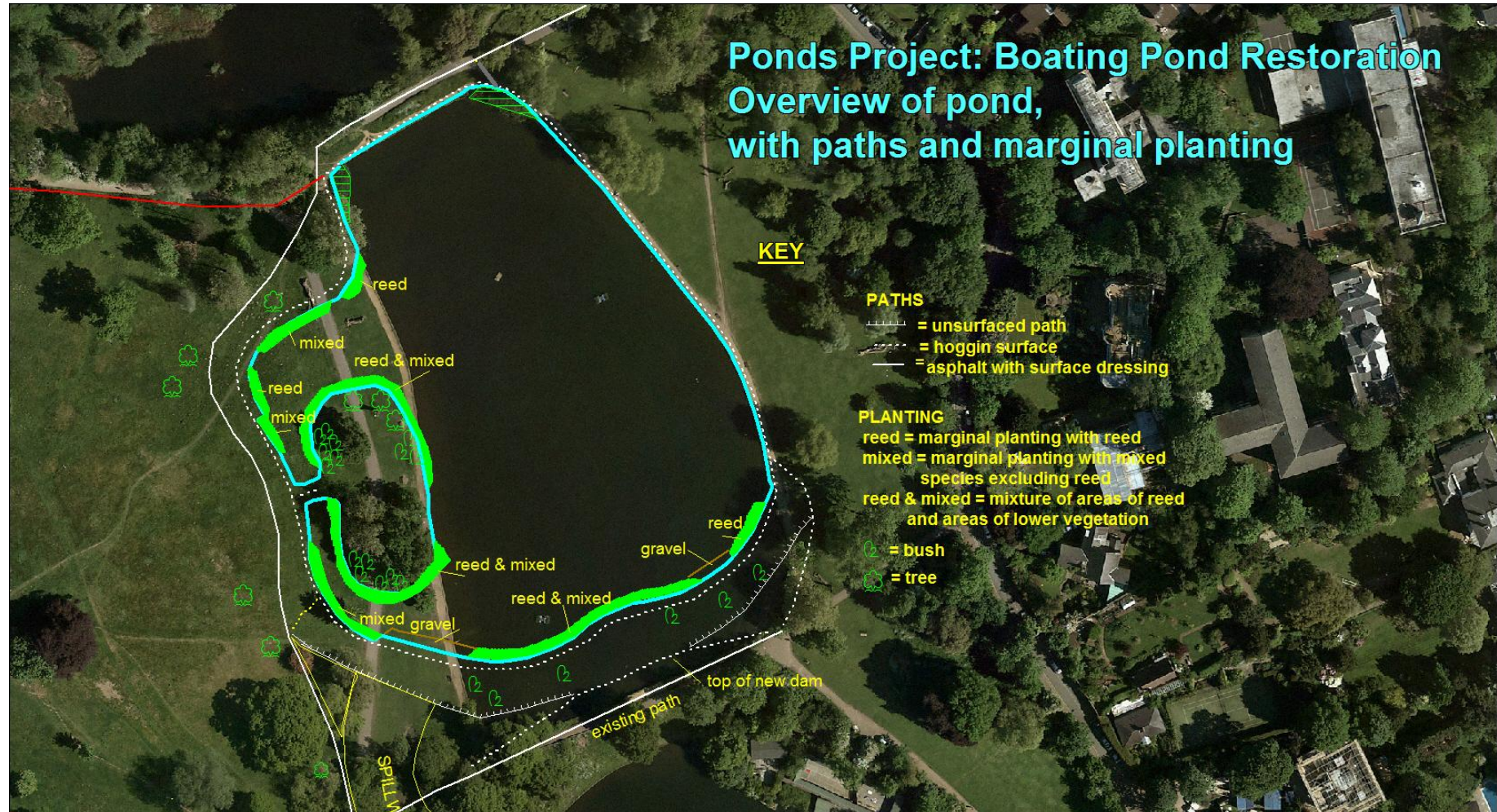
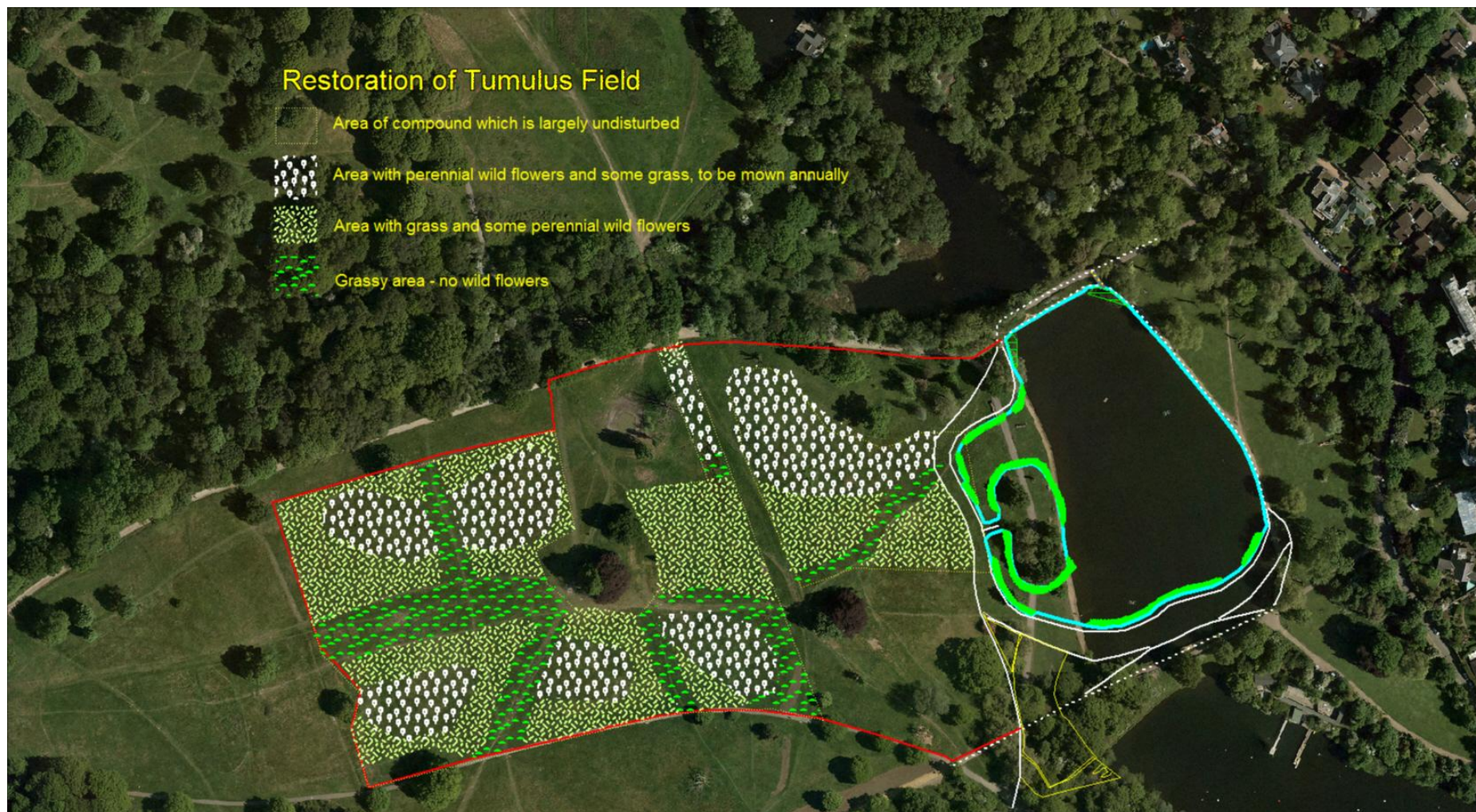




Figure 2: Proposed restoration of Tumulus Field

Cities Revealed photography copyright  
The Geo-Information Group, 2020





<b>Committee(s)</b>	<b>Dated:</b>
Hampstead Heath Consultative Committee Hampstead Heath, Highgate Wood and Queen's Park Committee	27 June 2016 18 July 2016
<b>Subject:</b> Annual Report on Hampstead Heath Constabulary for the period 1 April 2015 to 31 March 2016	<b>Public</b>
<b>Report of:</b> Superintendent Hampstead Heath	<b>For Decision</b>
<b>Report author:</b> Richard Gentry, Open Spaces Dept.	

## Summary

This report reviews the performance and effectiveness of the Hampstead Heath Constabulary during the period 1 April 2015 to 31 March 2016. During this period the Constabulary attended 2,406 occurrences/incidents and completed 1,751 enforcement actions engaging with users who were breaching or were suspected of breaching a bylaw. The details of this work, along with many other aspects of the Team's work will follow in this report. The Team achieve their success through the development and nurturing of a partnership approach drawing upon the talents of a number of stakeholders.

## Recommendation

Members are asked to:

- Note the contents of this report regarding the work of the Hampstead Heath Constabulary during 2015/16 and, in particular, recognise the continuous development and improvement of its performance across a range of activities. You are further asked to acknowledge the part played by the Constabulary in helping to ensure that Hampstead Heath remains a safe, appealing and enjoyable place for millions to visit each year, by reducing the fear of crime and anti-social behaviour.
- Views of Committee are sought in regard to the continuation of outreach work on our Public Sex Environments.
- Views of the Committee are sought with regard to the Constabulary Priority Activities for the period 2016/17 to 2018/19.

## **Main Report**

### **Background**

1. The overall objective of the Hampstead Heath Constabulary (HHC) is to provide a professional, efficient and effective Constabulary Service for Hampstead Heath, to educate its visitors and users on appropriate and responsible behaviour, to engage with users and stakeholders, and to enforce byelaws, deter and prevent anti-social behaviour, and reduce the fear of crime through a range of tactics of which visible high-profile patrolling is the most prominent. The approach adopted in achieving this objective is through engagement, education and ultimately enforcement. They provide a vital role in the safe management of large events across the Open Space and also maintain an excellent relationship with the Metropolitan Police, London Ambulance Service, The Air Ambulance (HEMS) and London Fire Brigade enhancing the effectiveness of all those organisations when attending incidents within the Open Space.

### **Current Position**

2. One vacancy has recently been filled following a successful interview process. The candidate is undergoing reference checks and hopes to join the HHC within the next 3 months. The Team would then be at its full establishment strength for the first time in 4 years. Until the new recruit starts their service the HHC is operating with a reduced compliment of staff; a Constabulary Manager, who also manages Queen's Park, two Sergeants working across two teams, and nine Constables. This resource includes two Constable Dog Handlers with general purpose-trained police dogs.
3. During this reporting year the number of Constables has fluctuated. One Constable resigned to take up an alternative career path and a further Constable retired on grounds of ill health after a serious road accident. In the same period three new Constables were selected and are now in post.
4. All recruit training has been delivered in house by the Sergeants who deliver a bespoke training package. Additionally a Sergeant has qualified to train other City of London staff in conflict resolution. They have delivered several short sessions across other Corporation sites.
5. HHC has continued to provide on-site policing for larger events, including the annual funfairs, the Affordable Art Fair, Grow London and the Circus where animal rights activists once again attended in 2015. HHC also represents the City of London with a managed presence on Parliament Hill during New Year's Eve celebrations thereby preventing the negative impact suffered by other similar sites across North London. Although numbers are difficult to ascertain, the Metropolitan Police have estimated that there were 7,000 people in attendance at Parliament Hill on New Year's Eve.
6. HHC continues to provide a service 365 days of the year, with patrols carried out throughout the day and night from a patrol base on Hampstead Heath.

7. The Civil Aviation Authority (CAA) have been contacted in writing in order to seek clarification on CAA Regulations and the use of drones with surveillance cameras on Hampstead Heath. We are aware of CAA guidance and are considering a policy on the use of drones in our Open Spaces. We are aware of public concern and the need for public safety.
8. A recent spate of robberies on Hampstead Heath led to an increase in patrols by the Constabulary in the Parliament Hill area. Following one reported robbery a suspect was chased and arrested by a member of the HHC. Following the arrest, he was conveyed to a Metropolitan Police Station. Currently there are no further updates on the outcome of his arrest at the time of writing this report.

### **Partnership Working**

9. HHC continues to work closely with, and seek support and advice from, the Terrence Higgins Trust (THT) and the Camden LGBT Forum with regard to the West Heath Public Sex Environment (PSE). A change in personnel at THT has delayed the City of London in moving forward at this stage with outreach work. The views of the Committee are sought on the continuation of Outreach work on the PSEs.

### **Aims and objectives of THT Outreach**

- Promotion of “Bin-it campaign and disposal of sex litter.
  - Encouraging the reporting of crime - experienced as well as witnessed.
  - To discourage drug misuse.
  - Encouraging safer sexual behavioural activity.
  - To sign PSE users to support networks including substance misuse projects, mental health teams, counselling, the police and sexual health clinics.
10. Outreach workers suggested a perceived increase in drug paraphernalia in the PSE area, e.g. needles, GBL bottles and small snap bags used for carrying drugs were seen. Users were actively encouraged to bin their sex litter and understood why it was necessary to do so. There were few adverse responses to this intervention. Assumptions of why the users were on the Heath were not made and - on a number of accounts - other users of the Heath (such as local residents, joggers and dog walkers) had a very positive response to the workers after an initial explanation of the project. Sexual health knowledge and awareness and HIV prevention and transmission were good amongst many PSE users. The sex litter seen in the PSE indicated that safer sex is usually practised.
  11. The Dogs Trust continues to attend the Heath once a month and also attended the ‘Give it a Go’ event at Parliament Hill Fields in July 2015. These monthly events took place on Saturdays between 11am and 4pm, and a trial event was also arranged within the grounds of Kenwood House. Upon a request from English Heritage the Constabulary do offer occasional support to Kenwood House staff in cases of emergency and are also often able to pass through the grounds to provide a reassuring presence. This does not detract from their work on the Heath.



12. Communication between the Metropolitan Police (MPS) and the HHC remains at the forefront of the Team's work. HHC were afforded the privilege of being the only outside body to ever be given access to MPS radio transmissions. Such transmissions are regulated by the highest levels of security and allowing HHC this access is clear proof of the professionalism of the Team and the benefit to the MPS of the support they receive from our Constables. In addition to Airwave links are kept strong through engagement in local Safer Neighbourhood Panels and residents meetings.

### **Providing an Effective Frontline Service**

13. HHC continues to provide an effective and efficient policing service on Hampstead Heath and Highgate Wood. During 2015/16 officers dealt with 2,406 incidents, including dealing with medical emergencies and fatalities. This can be extremely stressful for officers but, as ever, they demonstrated their resolve and professionalism. A Sergeant has recently completed training in the facilitation of Critical Incident Debriefing allowing them to work with colleagues who deal with traumatic events in an early, supportive and structured way.
14. In April 2015 officers were called upon to deal with the tragic case of a young man who drowned in the Men's Pond. The victim's community leaders were full of praise for the sensitivity displayed and support given by the Constables. Constables are also the first responders in cases of collapse and cardiac arrest. On 3 separate occasions Constables needed to deploy a defibrillator and assist with CPR procedures.
15. The Lido Response Plan is reviewed by a Sergeant each year and continues to be used by the HHC and Lido staff to manage visitor behaviour within the facility. Effective use of this plan prevented any incidents of serious anti-social behaviour throughout this reporting period.

### **Reports of Misconduct**

16. There have been no formal complaints made against any HHC officers during this reporting period.

### **Constabulary Performance Objectives**

17. The Performance Development Review process was refined by the City of London Corporation for 2015 onwards and the Constables had new more focussed objectives linked to the effective deployment of the police dogs and individual performance around enforcement activity. All Constables successfully completed their performance review year.
18. During the 2015/16 fishing season 283 permits were issued. This is a reduction on the previous year. Unauthorised fishing was dealt with through the issue of 43 formal warnings and 2 prosecutions.
19. Incidents of note during 2015/16 are shown at Appendix 1.



20. HHC dealt with 1,751 enforcement actions in total. This comprised of 11 arrests, 15 summary prosecutions, 907 formal warnings and 818 stop accounts. Constabulary Performance Statistics are shown at Appendix 2.

21. 15 cases were heard at Magistrates Court with a successful outcome (see Appendix 3).

### **Recommendations and Proposals for 2016/17**

22. The Constabulary Management Team produced an Engagement, Education and Enforcement Plan for 2015, which defines the HHC's role as follows:

- Protect and ensure the safety of persons visiting Hampstead Heath.
- Protect and ensure the safety of persons that work within Hampstead Heath.
- Protect the wildlife and environment which makes up Hampstead Heath.
- Work with other departments and agencies, both internally and externally, to achieve the above objectives.

23. The views of this Committee are sought with regard to the HHC continuing with the current Engagement, Education and Enforcement Plan priorities for the period 2016/17 to 2018/19. The current priority activities can be found at Appendix 4. The current priorities provide an over-arching framework within which the HHC will aim to meet or exceed the priority performance indicators.

24. A copy of the Constabulary Engagement, Education and Enforcement Plan 2015 can be found at Appendix 5.

### **Corporate & Strategic Implications**

25. The work of the HHC during 2015/16 continues to meet the City Together Strategy themes of *"protecting, promoting and enhancing our environment and [ensuring it] is safer and stronger"*.

26. The work of the Constabulary meets with the Departmental Strategic Objectives by *"Widening and developing what we offer to Londoners through education, biodiversity and volunteering"*.

27. Two strategic aims in the City Corporation's Corporate Plan 2015 – 2019 also apply to the work of the Constabulary, namely:

- Provide modern, efficient and high quality local services and policing within the Square Mile for workers, residents and visitors with a view to delivering sustainable outcomes.
- Provide valued services to London and the nation.

28. The HHC meet the overriding objectives of The Hampstead Heath Management Plan 'Towards a Plan for the Heath 2007 – 2017'

A1 - Recognise the need to be as inclusive as possible, increasing the Heath's availability to a diversity of users.

P1 - Recognise that the Heath's main users are those who come for informal activity and manage informal recreational activities to ensure that as far as is reasonably practical they do not adversely affect others' enjoyment of or the natural aspect of the Heath.

## **Implications**

29. Any legal implications of the Constabulary's work have been included in the body of the report.

30. Costs for any future outreach work provided by an external organisation will be funded from the Superintendents Local Risk Budget.

## **Conclusion**

31. This report sets out the breadth of work undertaken by the HHC in 2015/16 in providing a professional, efficient and effective service for Hampstead Heath. The relatively low level of serious crime and anti-social behaviour on the Heath demonstrates the effectiveness of the uniformed presence of the Constabulary in reassuring visitors and deterring crime.

## **Appendices**

- Appendix 1 - Constabulary – Incidents of Note 2015 / 16
- Appendix 2 - Constabulary Performance Statistics 2015 / 16
- Appendix 3 - Process by Summons – Magistrates Court Cases 2015 / 16
- Appendix 4 - Priority Activities 2015
- Appendix 5 - Hampstead Heath Constabulary, Education and Enforcement Plan 2015

## **Richard G Gentry**

Constabulary and Queen's Park Manager / Open Spaces Department

T: 020 7332 3322

E: [richard.gentry@cityoflondon.gov.uk](mailto:richard.gentry@cityoflondon.gov.uk)

Appendix 1. Constabulary – Incidents of Note 2015 / 16

<b>Month</b>	<b>Incident of Note</b>
<b>April</b>	Drowning at men's pond / Easter Fair
<b>May</b>	Increase in nitrous oxide use noticed / Whitsun Fair
<b>June</b>	Arrest at men's pond for repeat thefts from changing room
<b>July</b>	Give it a Go Event with Met Police
<b>August</b>	Series of assaults on lone females nr track. Suspect arrested by HHC in Highgate. 2 separate incidents of persons intent on suicide intercepted prior to act. August Fair
<b>Sept</b>	Agreement reached to provide support service to English heritage staff in emergency cases
<b>Oct</b>	Controlled explosion of grenade on Extension. Recovery of numerous items of ammunition from clearing of ponds / Circus protestors
<b>Nov</b>	Cardiac arrest victim Hockey pitch. Defibrillator deployed.
<b>Dec</b>	Patrol Kite Hill NYE 5000+ visitors
<b>Jan</b>	Ponds protest gathering - South End Green
<b>Feb</b>	Large quantity of cannabis plants deposited as waste near Vale of Health / Vehicle found part submerged in Whitestone Pond. Male arrested by HHC for indecent exposure and remanded in custody.
<b>March</b>	Fatality to dog by Vale Pond.

## Appendix 2. Constabulary Performance Statistics 2015 / 16

Incidents Recorded	April 2015 – March 2016
Crime/Anti-Social Behaviour	86
Byelaw	1452
Miscellaneous	868
<b>TOTAL</b>	<b>2,406</b>

Month	Incidents/Occurrences				
	2011/12	2012/13	2013/14	2014/15	2015/16
April	174	125	170	213	245
May	142	210	151	262	198
June	142	163	169	220	295
July	170	198	308	203	233
August	150	228	194	136	224
September	157	157	148	167	200
October	151	165	108	196	234
November	113	134	80	178	126
December	107	120	92	144	156
January	126	128	86	115	155
February	147	110	157	144	164
March	199	134	195	198	176
<b>Total</b>	<b>1,778</b>	<b>1,872</b>	<b>1,858</b>	<b>2,176</b>	<b>2,406</b>

Miscellaneous Incidents	2015/16
Found / Lost Property	132
General Patrol Incident	92
HEMS Landing	7
Information	284
Personal Accident / Injury	53
Suspicious Occurrence	54
Intelligence	23
Missing Person	62
Proactive Tasking Record	161
<b>TOTAL</b>	<b>868</b>

Byelaw Offence	2015/16
Byelaw 2 – Damage, Graffiti	31
Byelaw 3 – Digging	18
Byelaw 5 – Entering Enclosed Areas	16
Byelaw 8 – Camping	81
Byelaw 9 – Remain in Area After Close	5
Byelaw 13 – Bicycles, Motor Vehicles	349
Byelaw 21 – Dog Control	89
Byelaw 26 – Disturbing/III Treatment of Animals	5
Byelaw 31 – BBQ's and Fires	32
Byelaw 32 – Public Decency and Propriety	235
Byelaw 34 – Fighting, Swearing or Betting	35
Byelaw 41 – Fishing, Bathing, Preparation to play games	278
Other	278
<b>Total</b>	<b>1452</b>

### Appendix 3. Process by Summons – Magistrates Court Cases 2015 / 16

DATE	BYLAW	OUTCOME	BRIEF CIRCUMSTANCES
16/04/2015	21	Guilty plea. Fine and Costs £575	Dog attacked on another dog
28/05/2015	41	Guilty plea. Fine and Costs £290	Fishing without permit
14/07/2015	21	Guilty plea. Fine and Costs £834	Dog killed moorhen by boating pond
30/07/2015	13	Guilty plea. Fine and Costs £653	Repeat cyclist
26/08/2015	13	Guilty plea. Fine and Costs £420	Repeat cyclist
28/10/2015	31	Guilty plea. Fine and Costs £210	Firework prank on Kite Hill - Filmed for 'You Tube' video
02/11/2015	13	Guilty plea. Fine and Costs £320	Repeat cyclist
02/11/2015	13	Guilty plea. Fine and Costs £320	Repeat cyclist
05/12/2015	41	Guilty plea. Fine and Costs £200	Abusive male fishing without permit
20/01/2016	13 / 45	Guilty plea. Fine and Costs £260	Repeat cyclist gave false name
04/02/2016	21	Awaits court	Dog knocked over female walking across Extension causing injury
04/02/2016	21	Awaits court	Dog knocked over female walking across Extension causing injury
04/02/2016	2 / 13	Guilty plea, Fine and Costs £970	Damage car park fencing to drive off after issued parking penalty notice
10/02/2016	13	Guilty plea. Fine and Costs £20	Repeat cyclist
14/03/2016	21	Awaits court	Dog bit elderly male kite Hill

#### Appendix 4. Priority Activities 2015

	Priority Area	Action Area	Performance Target	2015
1	Dog control	Targeted & intelligence-led patrols in defined dog control areas.	Minimum two patrols daily in dog control hotspots.	Achieved
2	Dog control	Dog control-related incidents.	90% conviction rate for all dog control-related prosecutions.	Achieved
3	Dog control	Promoting responsible dog ownership.	Hold three dog micro-chipping and education Roadshows.	Achieved
4	Cycling	Targeted & intelligence-led patrols in defined non-cycle areas.	Minimum two patrols daily in cycle control hotspots.	Not Achieved
5	Cycling	Cycling-related incidents.	90% conviction rate for all cycling- related prosecutions.	Achieved
6	Cycling	Promoting responsible cycling.	Hold three cycle safety & security events.	Not Achieved (Operational Review - no longer holding specific events)
7	Youth Engagement (litter & anti-social behaviour)	Targeted patrols in areas where high concentrations of school children and young adults will be assembled.	Minimum one patrol daily during peak periods when school children and young adults will be congregated on the Heath.	Achieved
8	Youth Engagement (litter & anti-social behaviour)	Targeted engagement opportunities at youth events on the Heath.	Attend youth events - ten events on the Heath with proactive plan to communicate litter & ASB messages.	Not Achieved
9	Youth Engagement (litter & anti-social behaviour)	Targeted engagement opportunities at schools surrounding the Heath.	Attend three assemblies at local schools with proactive litter & ASB messages.	Not Achieved – (Consider the support of Learning Team for delivery of these events)
10	Lido	Targeted patrols during periods where there will be high concentrations of visitors to Lido.	Frequency of patrols to be defined by Sergeants based on risk assessment.	Achieved
11	Lido	Reducing instances of serious crime.	Deployment of 'Knife Arch' during defined peak periods.	Lido Response Plan used. (Knife Arch deployed once in 2015 on a wet day)
12	Public sex environments	Targeted patrols to reduce instances of anti-social behaviour, crime and litter.	Frequency of patrols to be defined by Sergeants based on risk assessment.	Achieved
13	Public sex environments	Attend LGBT stakeholder meetings.	Attend 75% of all LGBT meetings held.	Via SAWG Achieved
14	Public sex environments	Supporting Outreach work	Support Terrence Higgins Trust outreach workers on ten occasions per annum.	Achieved





Hampstead  
Heath

Registered Charity

---

# Hampstead Heath Constabulary

---

Page 99

This is one of  
14 green spaces  
managed by the  
City of London at  
little cost to the  
general public.

Engagement, Education and  
Enforcement Plan 2015

Welcome to the Engagement, Education, and Enforcement Plan 2013-2015 Hampstead Heath's Constabulary strategy to keep visitors, staff and the environment safe. This plan supports the City of London Corporation Plan 2013 –2017 and the Hampstead Heath Management Plan, 'Towards a Plan for the Heath' 2007 - 2017.

## About Hampstead Heath

Hampstead Heath is one of London's most popular open spaces, situated just six kilometres from Trafalgar Square. An island of beautiful countryside, the magic of Hampstead Heath lies not only in its rich wildlife and extensive sports and recreational opportunities, but also in its proximity and accessibility to millions of people. There is a zoo, an athletics track, an education centre, extensive children's facilities, three swimming ponds and a Lido.

### Biodiversity in the city

Hampstead Heath's mosaic of habitats provides a resource for wildlife just six kilometres from the centre of London. It is of national as well as regional importance. The City of London aims to maintain and extend the Heath's status as one of London's best places for wildlife. Hampstead Heath features a number of priority species identified in the UK Biodiversity Action Plan.

### Sport

Hampstead Heath provides excellent facilities for organised sport. With a lack of open space in surrounding densely populated boroughs, Hampstead Heath has a crucial role to play in providing sporting opportunities and promoting good health.

Acts of crime committed on Hampstead Heath or behaviours by individuals that are in contravention of the byelaws and regulations of Hampstead Heath continues to remain low. This is achieved through effective Engagement, Education & Enforcement. During the months January – December 2014 the Hampstead Heath Constabulary recorded the following;

**Engagement** - Over 17,000 occasions of providing advice/assistance to the public were logged by Hampstead Heath Constabulary.

**Education** – Over 800 formal warnings were issued to individuals for contravention of byelaw offences.

**Enforcement** – The Hampstead Heath Constabulary made or assisted in 11 arrests and 3 individuals were formally prosecuted for byelaw offences. (data Jan - Dec 2014)

### Through Engagement, Education and Enforcement the role of the Hampstead Heath Constabulary is to:-

- Protect and ensure the safety of persons visiting Hampstead Heath
- Protect and ensure the safety of persons that work within Hampstead Heath
- Protect the wildlife and environment which makes up Hampstead Heath
- Work with other departments and agencies both internally and externally to achieve the above objectives.





## What is the Hampstead Heath Constabulary

The 1989 Hampstead Heath Reorganisation Act allows the City of London to carry out functions under the Ministry of Housing and Local Government Provisional Order Confirmation (Greater London Parks and Open Spaces) Act 1967.

Constables are sworn in under Article 18 of the Ministry of Housing and Local Government Provisional Order Confirmation (Greater London Parks and Open Spaces) Act 1967. A Local Authority may procure officers appointed by them for securing the observance of the provisions of all enactments relating to open spaces under their control or management and of byelaws and regulations made thereunder to be sworn in as a Constable for that purpose but any such officer shall not act as a Constable unless in uniform or provided with a warrant.

Operating 365 days of the year, The Hampstead Heath Constabulary was established in 1992, to protect the Heath and its users through a series of byelaws. The byelaws are covered by criminal law legislation. The Constabulary may be called upon to enforce Byelaws, Regulations, Common Law and Criminal Law, protect the City of London Corporation property and provide a response to any incident that may spoil the enjoyment of Heath users. More serious incidents of a criminal nature are dealt with by the Metropolitan Police Service assisted by the Hampstead Heath Constabulary

Page 101



### The Hampstead Heath Constabulary is made up of:-

- 10 constables
- 2 Sergeants
- The Constabulary is overseen by a Constabulary Manager who reports to the Hampstead Heath Superintendent
- Two of the ten constables patrol and support the work of the Constabulary with trained working police dogs.

### The Constabulary has a number of duties that it has to undertake, these include:-

- Patrolling on a regular basis, on foot, mountain bike and when necessary in marked vehicle(s) covering the entire area of Hampstead Heath; this includes Golders Hill Park, The Hampstead Heath Extension, West Heath, Sandy Heath and Parliament Hill
- Responding to incidents and calls made by staff on the Heath
- Responding to incidents and calls made by members of the public using the Heath
- Enforcing byelaws which may include or result in the arrest and prosecution of offenders
- Providing reassurance, security and safety at planned events and activities held on the Heath
- Working with the Metropolitan Police Service as a liaison point in relation to broader policing issues that may affect Hampstead Heath.

**"The Hampstead Heath Constabulary plays an important role in the overall management, maintenance and safety of the Open Spaces of Hampstead Heath.**

**Our key purpose is about 'Keeping the Heath Safe & Protected'. We must do this in a visible manner and style that enhances the visitor experience."**

# Vision, Values and Environment

## Vision

To be the very best at providing a timely effective and appropriate response when called upon by visitors, staff and other departments or agencies, internal or external.

The Constabulary team will achieve this through;

- Listening and working with our visitors to better understand their needs
- Working with our committees to better understand their priorities
- Working in partnership with internal departments & external agencies to solve problems together that support their own and the Constabularies priorities

## Values

The values of the Constabulary define the way upon which we operate individually and collectively. To this end we will;

- Expect our officers to be of smart appearance and trained and equipped to deal with all incidents and issues that arise.
- Expect our officers to be visible and approachable
- Expect our officers to treat every interaction or engagement in a professional manner.

## Environment

The Constabulary patrol and respond to incidents and issues on a daily basis throughout the Heath. Within areas of the Heath where there is likely to be higher concentrations of visitors and staff, to ensure their safety and security and to reduce crime, anti-social behaviour and the committing of byelaw offences the Constabulary will where necessary conduct effective targeted patrols. These areas include;

### 1. Parliament Hill

Tennis Courts, Running Track, Children's Play Areas, Lido, Adventure Play Area and One O'clock Club

### 2. Golders Hill Park

Zoo, Café, Tennis Courts

### 3. Ponds

Mens, Ladies and Mixed Bathing Pond and angling ponds

## Performance Highlights

The Constabulary is proud of the service that it provides to visitors and staff of the Heath and how it supports the protection of the Heath environment.

There are no two incidents that are the same and every day the Constabulary is expected to meet the ongoing challenges that are presented. Looking back during the periods under review, performance highlights include:

The Constabulary successfully prosecuted a number of people relating to dog control offences. In one case where a dog was fatally injured the walker of the offending dog was fined £80 and ordered to pay costs of £55 plus a victim surcharge of £15. In relation to this incident, the owner of the dog was fined £350 and was ordered to pay costs of £400 plus a victim surcharge of £15.

Weeks before the commencement of the 2012 Olympics, Constabulary officers, the Metropolitan Police and City of London staff, through the usage of good intelligence and speed of action, were able to evict peacefully Occupy London Camp activist within 24 hours of them setting up an illegal camp on Hampstead Heath.

In 2014 Constabulary provided a full complement of officers, to the 'Give it a Go Event' at Parliament Hill. Attracting in excess of 7,000 visitors, the Constabulary undertook high visibility patrols, ensuring that visitor were safe throughout the event and presented a dog display with the teams police dogs.

Popular fairs at East Heath during Easter, Whitsun and August attract significant numbers of visitors. The high visibility presence of the Constabulary results in no reports of serious crime or anti-social behaviour.

The Constabulary regularly undertook pre-planned and spontaneous operations to combat the committing of cycling byelaw offences on the Heath. An issue with both environmental and safety implications, the Constabulary successfully prosecuted offending individuals. In one case a persistent offender received a fine and cost award against them of £490.

To better monitor and manage angling on the Heath, the Constabulary conducted a review of the existing angling permit system in place. As a result changes have been made to the system that will ensure both environmental improvements and reduction in the commission of byelaw offences in this area.

In support of responsible cycling by visitors using the Heath, the Constabulary held two Cycle Safety and Security events. Providing cycling advice and guidance, the events were also an opportunity for attendees to have their cycle security marked.







## Priorities

Our priorities provide the overarching framework within which we will meet and exceed our priority performance indicators.

	Engagement	Education	Enforcement	Performance Outcomes
<b>Making every contact count</b>	Involve you more in keeping Hampstead Heath safe  Listen, understand and respond to you in way that best suits your needs Continue to work with neighbourhood & Heath groups to better understand the needs of those that we provide a	Continue to work with local schools and youth groups.  To hold and support events and activities on the Heath where education messages can be conveyed	To deliver enforcement activities in a professional, safe and ethical manner	Improve the satisfaction levels of users of the Constabulary services
<b>Quality of service</b>	Enhance existing performance management arrangements for Constabulary officers  Provide safe, secure and accessible Open Spaces and services for the benefit of London	To use different forms of media, including new media to convey Heath education messages  Undertake quality call backs on victims of crime on the Heath or those using the Constabulary	Work with partners to secure sufficient resources to deliver an efficient and effective service  To present enforcement prosecutions to courts in a timely and professional manner	Reduce the number of incidents of antisocial behaviour on the Heath
<b>Leadership</b>	Encourage and enable all staff to take ownership and lead change to make a positive difference every day  Manage, develop and empower a capable and motivated work force to achieve high standards of safety and performance	Provide focused learning opportunities for staff and volunteers to feel confident in meeting the changing needs of the Constabulary Work collaboratively with other stakeholders and public bodies to continue to improve service	Create an enforcement plan outlining specific proactive enforcement activities that augments the Engagement, Education and Enforcement plan	Provide leadership at all levels to support performance

## Priority Performance Indicators

Linked to our Priorities our Priority Performance Indicators are the specific priority activities that we will undertake:

	Priority Area	Action Area	Performance Target
1	Dog control	Targeted & intelligence led patrols in defined dog control areas	Minimum two patrols daily in dog control hotspots
2	Dog control	Dog control related incidents	90% conviction rate for all dog control related prosecutions
3	Dog control	Promoting responsible dog ownership	Hold 3 dog micro chipping and education Roads Shows
4	Cycling	Targeted & intelligence led patrols in defined non cycle areas	Minimum two patrols daily in cycle control hotspots
5	Cycling	Cycling related incidents	90% conviction rate for all cycling related prosecutions
6	Cycling	Promoting responsible cycling	Hold 3 cycle safety & security events
7	Youth Engagement (litter & anti-social behaviour)	Targeted patrols in areas where high concentrations of school children and young adults will be assembled	Minimum 1 patrol daily during peak periods when school children and young adults will be congregated on Heath
8	Youth Engagement (litter & anti-social behaviour)	Targeted engagement opportunities at youth events on the Heath	Attend youth events - 10 events on Heath with proactive plan to communicate litter & ASB messages
9	Youth Engagement (litter & anti-social behaviour)	Targeted engagement opportunities at schools surrounding Heath	Attend 3 assemblies at local schools with proactive litter & ASB messages
10	Lido	Targeted patrols during periods where there will be high concentrations of visitors to Lido	Frequency of patrols to be defined by Sergeants based upon risk assessment
11	Lido	Reducing instances of serious crime	Deployment of 'Knife Arch' during defined peak periods.
12	Public sex environments	Targeted patrols to reduce instances of anti-social behaviour, crime and litter	Frequency of patrols to be defined by Sergeants based upon risk assessment
13	Public sex environments	Attend LGBT stakeholder meetings	Attend 75% of all LGBT meetings held
14	Public sex environments	Supporting Outreach work	Support Terrence Higgins Trust outreach workers on 10 occasions per annum



### Contact Information

The Constabulary can be contacted on the following number

By telephone: 020 8340 5260

You should however always first consider whether dialling 999 is more appropriate if there is:

- Danger to life
- Serious injury to property or person
- A crime is in progress
- An offender has been detained and causes a risk to other people

### Face to face

If you would like to speak to us face to face please either phone or e-mail us on the numbers provided and we can arrange to meet with you at a suitable and convenient location at Hampstead Heath

Email: [HH-Constabulary@cityoflondon.gov.uk](mailto:HH-Constabulary@cityoflondon.gov.uk)

Do You Have Feedback on our Plan? If you have any queries in relation to our plan please contact:

Constabulary Manager  
City of London  
Heathfield House  
432 Archway Road  
London N6 4JH  
Telephone: 020 7332 3322

Email: [HH-Constabulary@cityoflondon.gov.uk](mailto:HH-Constabulary@cityoflondon.gov.uk)

Web: [www.cityoflondon.gov.co.uk/hampsteadheath](http://www.cityoflondon.gov.co.uk/hampsteadheath)

Twitter: [www.twitter.com/CityCorpHeath](http://www.twitter.com/CityCorpHeath)

This page is intentionally left blank

<b>Committee(s):</b>	<b>Date(s):</b>
Hampstead Heath, Highgate Wood and Queen's Park Committee	18 July 2016
<b>Subject:</b> Cyclical Works Programme bid 2017/18	<b>Public</b>
<b>Report of:</b> The City Surveyor (CS: 155/16)	<b>For Information</b>
<b>Report author:</b> Alison Hurley, City Surveyor's Department	

## Summary

This report sets out a provisional list of cyclical projects being considered for Hampstead Heath, Highgate Wood and Queen's Park in 2017/18 under the umbrella of the "cyclical works programme".

The draft cyclical project list for 2017/18 totals approximately £1m and if approved, will continue the ongoing maintenance of the property and infrastructure assets.

## Recommendation

That your Committee notes the content of this report

## Main Report

### Background

1. At the meeting of Resource Allocation sub-Committee in January 2016 Members considered and approved a prioritised list of "cyclical works" projects for 2016/17.
2. The total value of the overall Cyclical Works Programme was £5.5m. Of this allocation Hampstead Heath, Highgate Wood and Queen's Park received £0.6m to allow all the projects on the prioritised list to proceed in 2016/17.
3. The Director of Open Spaces has requested that your Committee be provided with a preview of the likely works list in 2017/18 for Hampstead Heath, Highgate Woods and Queens Park.

### Current Position

4. I am in the process of finalising my review of our forward maintenance plans (20 year) which will form the basis of the next round of cyclical works bids for 2017/18.
5. The review is expected to be completed shortly. In the interim and to allow you to have a preview I attach at Appendix A the provisional list of projects for

Hampstead Heath, Highgate Wood and Queen's Park under consideration for 2017/18.

6. The information for the bid has been taken from the 20 years for each property within the Estate; the 20 year plans are regularly updated in conjunction with the Superintendent and his management team to ensure they are as accurate as possible.
7. In January 2016 Members agreed that additional funds to the sum of £2m and £1m for City's Cash and City's Fund respectively should be allocated to the Cyclical Works Programme meaning that more projects would be allocated to the actual list of approved projects.
8. It should be noted that the provisional list for 2017/18 is subject to a final review prior to presentation to the Corporate Asset sub-Committee in September 2016 and consideration and approval of the final list by the Resource Allocation sub-Committee at the beginning of 2017.
9. The bid list has been presented to the Hampstead Heath Consultative Committee on the 27<sup>th</sup> June 2016.

### **Prioritisation of Projects**

10. The new project prioritisation model developed for the cyclical works programme has been applied to projects identified from forward cyclical maintenance/replacement plans of the Barbican Centre, GSMD and the Corporate Properties under the City Surveyors control.
11. Essential Projects for consideration of including within the bid list are ranked in order of priority according to the following criteria and scoring mechanism.
  - Health, Safety & Security (weighting 5)
  - COL Reputational (weighting 4)
  - Maintaining Income Stream (weighting 4)
  - Assets Performance (weighting 5)
  - Client Feedback (weighting 2)
12. The cyclical works programme Peer Review Panel, chaired by the Financial Services Director has met twice to consider the draft prioritisation of projects across all Departments. The panel has provided a "sense check" to ensure that the prioritisation ranking reflected in the Prioritisation model has been rigorously and consistently applied and that the outcomes in terms of prioritisation align to the City's strategic aims and objectives.

### **Corporate & Strategic Implications**

13. This provisional list for Hampstead Heath, Highgate Wood and Queen's Park identifies a number of works that could be progressed within a reasonable timescale subject to funding being made available from the cyclical works



programme, and providing that proposed expenditure is not affected by other decisions taken in respect of any particular property asset.

14. Once agreed the projects relating to the cyclical works programme will be reviewed to reflect strategic asset management decisions and the wider corporate objectives to ensure that the City can meet its overall criteria relative to the management of its property assets.
15. The proposals contained within the attached appendix lists support the theme “Protects, promotes and enhances our environment” within the City Together Strategy.
16. It is intended that Hampstead Heath, Highgate Wood and Queen’s Park benefit from the provisional 2017/18 cyclical works programme, in the order of £1,050,600m;

Hampstead Heath	£733,100	69%
Highgate Woods	£261,000	25%
Queens Park	<u>£59,500</u>	6%
	<b>£1,053,600</b>	

### **Implications**

17. As indicated above, these provisional schedules are based on a preliminary review of the forward repairs and maintenance plans and are subject to further evaluation in terms of value to Hampstead Heath, Highgate Wood and Queen’s Park and with regard to overall corporate priorities, including availability of resources, sound asset management and accommodation provisions/arrangements. It will be appreciated that no commitment to their funding can be implied or guaranteed at this stage.

### **Conclusion**

18. The attached provisional list of work for 2017/18 allows the on-going cyclical repairs and maintenance of the City’s Operational estate and Hampstead Heath, Highgate Wood and Queen’s Park in particular to continue.

### **Appendices**

- Appendix A – draft Cyclical Works Programme for 2017/18

### **Alison Hurley**

Head of FM - Assistant Director  
City Surveyors Department

T: 020 7332 1069

E: [Alison.Hurley@cityoflondon.gov.uk](mailto:Alison.Hurley@cityoflondon.gov.uk)

This page is intentionally left blank

## Appendix A - Hampstead Heath Cyclical Works Programme List

<b>Committee</b>	<b>Property</b>	<b>Location</b>	<b>Description</b>	<b>Cost</b>
Hampstead Heath, Highgate Wood and Queen's Park	Hampstead Heath	General/ Infrastructure	MAIN WATER SUPPLY PIPEWORK REPLACEMENT	£14,500
Hampstead Heath, Highgate Wood and Queen's Park	Parliament Hill Fields	Athletics Track Pavilion Complex	ROOF REPLACEMENT	£120,000
Hampstead Heath, Highgate Wood and Queen's Park	Parliament Hill Fields	Athletics Track Pavilion Complex	RUNNING TRACK COLUMNS RELAMP	£12,000
Hampstead Heath, Highgate Wood and Queen's Park	Parliament Hill Fields	Paddling Pool, Filter House	DOSING SYSTEM REPLACEMENT	£8,000
Hampstead Heath, Highgate Wood and Queen's Park	Parliament Hill Fields	Athletics Track Pavilion Complex	SPACE HEATING - REPLACEMENT	£9,900
Hampstead Heath, Highgate Wood and Queen's Park	Parliament Hill Fields	Football Changing Rooms & RSPB Project Centre	SHOWERS REFURBISHMENT	£14,500
Hampstead Heath, Highgate Wood and Queen's Park	Parliament Hill Fields	Football Changing Rooms & RSPB Project Centre	TOILETS REFURBISHMENT (CHANGING ROOMS)	£30,000
Hampstead Heath, Highgate Wood and Queen's Park	Golders Hill Park Area	Staff Yard Complex	BOILERS REPLACEMENT	£24,000
Hampstead Heath, Highgate Wood and Queen's Park	Golders Hill Park Area	Staff Yard Complex	HEATING COILS REPLACEMENT (GREENHOUSE)	£24,000
Hampstead Heath, Highgate Wood and Queen's Park	Parliament Hill Fields	Lido Buildings Complex	EXTERNAL/INTERNAL DECORATIONS	£38,500
Hampstead Heath, Highgate Wood and Queen's Park	Parliament Hill Fields	Lido Buildings Complex	LIDO FABRIC REPAIRS	£60,000
Hampstead Heath, Highgate Wood and Queen's Park	Parliament Hill Fields	Lido Buildings Complex	TURNSTILE TO EXITS REPLACEMENT (LIDO)	£7,500
Hampstead Heath, Highgate Wood and Queen's Park	Parliament Hill Fields	Lido Buildings Complex	HEATING DISTRIBUTION REPLACEMENT	£17,000

Hampstead Heath, Highgate Wood and Queen's Park	Golders Hill Park Area	Staff Yard Complex	INTAKE SWITCHGEAR (STAFF OFFICE)	£6,000
Hampstead Heath, Highgate Wood and Queen's Park	Golders Hill Park Area	Staff Yard Complex	EXTERNAL LIGHTING REPLACEMENT	£3,500
Hampstead Heath, Highgate Wood and Queen's Park	Golders Hill Park Area	Staff Yard Complex	HEATING REPLACEMENT	£17,000
Hampstead Heath, Highgate Wood and Queen's Park	Parliament Hill Fields	General	PATH RESURFACING	£60,000
Hampstead Heath, Highgate Wood and Queen's Park	Hampstead Ponds	Mixed Bathing Pond Complex	FLOORING REPLACEMENT	£3,500
Hampstead Heath, Highgate Wood and Queen's Park	Parliament Hill Fields	Football Changing Rooms & RSPB Project Centre	WINDOWS REPLACEMENT	£30,000
Hampstead Heath, Highgate Wood and Queen's Park	Golders Hill Park Area	Staff Yard Complex	LANDLORDS LIGHTING & POWER REWIRE	£32,500
Hampstead Heath, Highgate Wood and Queen's Park	Golders Hill Park	Tennis Booking Hut and Shelter	LIGHTING REPLACEMENT	£2,500
Hampstead Heath, Highgate Wood and Queen's Park	Director's House	Director's House	LANDLORDS LIGHTING & POWER REWIRE	£5,000
Hampstead Heath, Highgate Wood and Queen's Park	Director's House	Director's House	CENTRAL HEATING SYSTEM REPLACEMENT	£3,500
Hampstead Heath, Highgate Wood and Queen's Park	Golders Hill Park Area	Staff Yard Complex	SPACE HEATERS REPLACEMENT (POLY TUNNEL)	£2,000
Hampstead Heath, Highgate Wood and Queen's Park	Parliament Hill Fields	General	FENCING OVERHAUL/ DECORATIONS	£18,000
Hampstead Heath, Highgate Wood and Queen's Park	Parliament Hill Fields	One O'clock Club Building	EXTERNAL DECORATIONS	£3,000
Hampstead Heath, Highgate Wood and Queen's Park	Parliament Hill Fields	One O'clock Club Building	INTERNAL DECORATIONS	£6,000
Hampstead Heath, Highgate Wood and Queen's Park	Parliament Hill Fields	Adventure Playground Building	INTERNAL DECORATIONS	£6,000
Hampstead Heath, Highgate Wood and Queen's Park	Parliament Hill Fields	Athletics Track Pavilion Complex	ATHLETICS TRACK - PAINT COLUMNS	£18,000

Hampstead Heath, Highgate Wood and Queen's Park	Parliament Hill Fields	Football Changing Rooms & RSPB Project Centre	CHANGING ROOM INTERNAL OVERHAUL	£24,000
Hampstead Heath, Highgate Wood and Queen's Park	Parliament Hill Fields	Football Changing Rooms & RSPB Project Centre	EXTERNAL DECORATIONS	£6,000
Hampstead Heath, Highgate Wood and Queen's Park	Parliament Hill Fields	Football Changing Rooms & RSPB Project Centre	FLOORING REPLACEMENT	£9,500
Hampstead Heath, Highgate Wood and Queen's Park	Hampstead Ponds	Mixed Bathing Pond Complex	EXTERNAL DECORATIONS	£7,000
Hampstead Heath, Highgate Wood and Queen's Park	Vale of Health and East Heath	Whitestone Pond	ALGAE REMOVAL (DOFF SYSTEM CLEAN)	£2,500
Hampstead Heath, Highgate Wood and Queen's Park	Golders Hill Park	Cafeteria and Public Toilets	EXTERNAL DECORATIONS	£7,000
Hampstead Heath, Highgate Wood and Queen's Park	Golders Hill Park	Cafeteria and Public Toilets	TOILET REFURBISHMENT (PUBLIC TOILETS)	£41,000
Hampstead Heath, Highgate Wood and Queen's Park	Parliament Hill Fields	Staff Yard Building Complex	WINDOWS/DOOR PANEL SHUTTERS REPLACEMENT (OFFICE)	£15,000
Hampstead Heath, Highgate Wood and Queen's Park	Parliament Hill Fields	Cafeteria	PAVING RESURFACING	£6,000
Hampstead Heath, Highgate Wood and Queen's Park	Parliament Hill Fields	General	GATES DECORATION	£12,000
Hampstead Heath, Highgate Wood and Queen's Park	West Heath	Pergola Shelter and Store	PERGOLA - ENGINEER TO MONITOR STRUCTURES	£2,500
Hampstead Heath, Highgate Wood and Queen's Park	West Heath	General	SIGNS REPLACEMENT	£1,200
				<b>£730,100</b>

### Queens Park - Cyclical Works Programme List

<b>Committee</b>	<b>Property</b>	<b>Location</b>	<b>Description</b>	<b>Cost</b>
Hampstead Heath, Highgate Wood and Queens Park	Queens Park	General	FENCES/GATES DECORATION	£24,000
Hampstead Heath, Highgate Wood and Queens Park	Queens Park	General	FENCING REPLACEMENT/ DECORATION	£3,500
Hampstead Heath, Highgate Wood and Queens Park	Queens Park	General	FOOTPATH RESURFACING	£12,000
Hampstead Heath, Highgate Wood and Queens Park	Queens Park	Cafeteria & Park Office	SECURITY ALARM REPLACEMENT (PARK OFFICE)	£4,000
Hampstead Heath, Highgate Wood and Queens Park	Queens Park	Cafeteria & Park Office	RADIATORS & PIPEWORK REPLACEMENT	£3,500
Hampstead Heath, Highgate Wood and Queens Park	Queens Park	Mess Room and Stores	ELECTRIC GATES REPLACEMENT	£8,500
Hampstead Heath, Highgate Wood and Queens Park	Queens Park	Mess Room and Stores	SECURITY ALARM REPLACEMENT	£4,000
				<b>£59,500</b>

## Highgate Wood - Cyclical Works Programme List

<b>Committee</b>	<b>Property</b>	<b>Location</b>	<b>Description</b>	<b>Cost</b>
Hampstead Heath, Highgate Wood and Queens Park	Highgate Wood	Sewage Pumping Station	PUMP/TANK REPLACEMENT	£24,000
Hampstead Heath, Highgate Wood and Queens Park	Highgate Ponds	General	FENCING OVERHAUL/ DECORATIONS	£26,500
Hampstead Heath, Highgate Wood and Queens Park	Highgate Ponds	Millfield Lane Toilets	FENCING REPLACEMENT	£9,000
Hampstead Heath, Highgate Wood and Queens Park	Highgate Wood	The Pavilion	FIRE ALARM REPLACEMENT	£6,000
Hampstead Heath, Highgate Wood and Queens Park	Highgate Wood	General	FOOTPATH RESURFACING	£80,000
Hampstead Heath, Highgate Wood and Queens Park	Highgate Wood	The Pavilion	LANDLORDS LIGHTING & POWER REWIRE	£40,000
Hampstead Heath, Highgate Wood and Queens Park	Highgate Wood	The Pavilion	BOILER REPLACEMENT	£22,000
Hampstead Heath, Highgate Wood and Queens Park	Highgate Wood	Toilet Block	ELECTRIC HOT WATER HEATER REPLACEMENT	£2,500
Hampstead Heath, Highgate Wood and Queens Park	Highgate Wood	Playground Shelter	ROOF REPLACEMENT	£2,500
Hampstead Heath, Highgate Wood and Queens Park	Highgate Ponds	Men's Bathing Pond Toilets	EXTERNAL DECORATIONS & DAMP PROOFING	£20,000
Hampstead Heath, Highgate Wood and Queens Park	Highgate Wood	The Pavilion	SECURITY ALARM REPLACEMENT	£2,000
Hampstead Heath, Highgate Wood and Queens Park	Highgate Wood	1 Hornbeam Cottage	BOILER REPLACEMENT	£6,000
Hampstead Heath, Highgate Wood and Queens Park	Highgate Wood	1 Hornbeam Cottage	RADIATORS & PIPEWORK REPLACEMENT	£5,000
Hampstead Heath, Highgate Wood and Queens Park	Highgate Wood	Toilet Block	EXTERNAL DECORATIONS	£6,000
Hampstead Heath, Highgate Wood and Queens Park	Highgate Wood	Toilet Block	TOILET REFURBISHMENT	£9,500
				<b>£261,000</b>

This page is intentionally left blank



<b>Committee(s)</b>	<b>Dated:</b>
Queen's Park Joint Consultative Group – For Discussion Hampstead Heath, Highgate Wood, Queen's Park Committee – For Decision	21 June 2016 18 July 2016
<b>Subject:</b> Queen's Park – Superintendents Update - June 2016	<b>Public</b>
<b>Report of:</b> Superintendent of Hampstead Heath	<b>For Discussion</b>
<b>Report author:</b> Richard Gentry – Open Spaces Department	

## Summary

This report provides an update to Members of the Queen's Park Joint Consultative Group (QPJCG) in regard to the ongoing management and operational activities in Queen's Park since November 2015. This report gives an update on operational matters, operational working arrangements, income generation, sustainability, conservation, infrastructure and facilities.

## Recommendation(s)

Members are asked to:

- Note the content of the report.
- Give feedback on the proposed fire work display, to be conveyed to the Hampstead Heath, Highgate Wood and Queen's Park Committee at their meeting on the 18 July 2016.
- That Members of the Hampstead Heath, Highgate Wood and Queen's Park Committee endorse option c) in regard to the proposed firework display in the Park.

## Main Report

### Background

1. The most recent report to this Committee was November 2015.
2. The café tender was awarded to a local company, Minkies (Surebrooks Limited), who will take over the lease of the café on 1 August 2016.

### Proposed changes to working arrangements.

3. Over the last nine months a comprehensive review of operational working arrangements has been carried out across Hampstead Heath, Highgate Wood, and Queen's Park. The purpose of carrying out this review is to identify areas where efficiencies can be made, and to redeploy resources to areas needing support.

4. The proposals will ensure that our staff resources are used effectively and consistent cover is maintained throughout the year, to reflect the needs of the service and maintain the work/life balance for our staff. Savings made as part of the proposals will contribute to Service Based Review Savings.
5. Queen's Park staff were included in a four week informal consultation process, which finished in February 2016. Following a number of meetings with staff and Trade Union Representatives, a Formal Consultation was launched on 7 March and closed on 10 April. It is intended to implement the changes to working arrangements on 1 October 2016. The proposed changes will see an improved rota which is more equitable amongst staff.
6. Queen's Park staff have been informally consulted on a restructure within the Team. Further information is required from the Human Resources Department before the process moves in to formal consultation. It is intended to implement the new structure on 1 October 2016.

### **Operational Management**

7. The Bandstand continues to be hired out for small gatherings. Since January 2016 we have received 26 bookings to make use of the Bandstand. In 2015 there were 34 parties generating £1,870 income.
8. The Children's Farm donation post, installed in March 2015, has raised £2,645 to date. These donations go towards the daily upkeep and maintenance of the farm, including the purchasing of food.
9. The Queen's Park Animal Attendant is currently covering a vacant post at the Golders Hill Park Zoo. Interviews for this post will be taking place in June. The Animal Attendant will continue to work between the two sites after the vacancy has been filled. As part of identified efficiencies, the Animal Attendant will support the Zoo Team Leader in changes at the Golders Hill Park Zoo and at the Queen's Park Children's Farm. Before any changes are considered the City Corporation will consult with its visitors. The Animal Attendant will also support the Open Spaces Learning Team to deliver educational sessions in the farm and park.
10. The City Surveyor's 20 Year Additional Works Programme has enabled a number of pathways to be resurfaced, including the Harvist Road and the Kingswood Avenue park entrances. The two brick holding walls at the entrance to Harvist Road have been replaced with wooden raised beds, and the existing plants have been successfully replanted.
11. The Lych Gate in the Quiet Garden has also had works carried out under the Additional Work Programme. New drainage has been installed along with new brick work and roof tiles. There was evidence of some movement in the building and the structure has been underpinned. Contractors have painted the interior and exterior of the structure. Pigeon deterrent spikes were also installed to prevent them from nesting in the roof area. A broken shutter was removed from the structure.

12. At the northern end of the park the Petanque rink (boulle) has been removed due to underuse, and the wooden sleepers will be used to make steps on Hampstead Heath. The interpretation sign containing the Petanque rules has been transferred to Parliament Hill Fields and will be installed on the Petanque rink. Two items of trim trail equipment will be installed in this area in June. These items match our existing trim trail equipment. The remainder of the area will be returned to grass.
13. The hedge laying that staff carried out in the Woodland Walk last year has been continued and now stretches from the Woodland Walk entrance towards the Bandstand area. With the support and guidance of our Ecologist two members of the Queen's Park Team have been empowered to carry out this task with little supervision.

### **Visitors and Community**

14. There are a number of events taking place in the park this year. 'Where is the Nomad' will have four outdoor screenings this year, these will take place on the 13 and 20 August 2016, and 3 and 24 September 2016. Regents Brass, a local brass band, will play on the Bandstand on Sundays in July and August and children's entertainment has been booked and will take place on Wednesdays and Fridays in August. These events will be published on the website and promoted via social media.
15. This year the RSPB will be holding 'Family Fun' sessions in the park with mini beast safaris and ecological themed sessions for children and their parents. A number of events have already been held with further events taking place throughout the summer. These events are free for members of the public.
16. The Queen's Park Area Residents' Association are holding their bi-annual Open Gardens and Studios event on 19 June 2016. Gazebos will be erected by the volunteers for the artists to showpiece their work in the park. The event will include music on the Bandstand. Queen's Park Day will take place on the 18 September 2016.
17. The Hampstead Heath Constabulary has carried out a number of patrols in Queen's Park to respond to concerns raised in regard to dogs off lead. Constables have issued a small number of formal warnings and feedback has been positive from park users. One email received said "Today while i (sic) was walking my Dogs in the Queens park, NW London I was surprised and very happy to meet a few of your officers from the Hampstead Heath Constabulary in the park".
18. Currently, an online survey is available on the Queen's Park webpage; the Park Manager is seeking the views and opinions of its users on future events in the park. The survey will be promoted further over the summer months and the results will be presented at the next meeting of the Consultative Group in November 2016.

19. An events company, XclusiveTouch Ltd, have approached the City Corporation in regard to a family fireworks display being held in the park on the 5 November 2016. The event company aim to attract 10,000 people to this event, focusing on families attending. They will supply stewards and arrange for the build and strike down of the event. A licence fee for this type of event would generate income for the park. The event company have suggested the following;
- Food stalls, food and chocolate brands / beer tent in the park for the duration of the event
  - Fairground rides for the duration of the event
  - Set up the fireworks one day in advance (in safe area)
  - Fireworks after dusk, one show for smaller children and another for adults / families
  - Ticketed event for the fireworks display
20. A local park in Brent, Roundwood Park, has an annual firework display; this firework display is free of charge. There is a charge for fairground rides.
21. Due to the time of year and the possible inclement weather conditions, there are concerns with regard to the impact an event of this type may have on turfed areas of the park.
22. Options to consider are;
- a) Issue a licence for the event to take place on the 5 November 2016, including the food stalls and fairground rides
  - b) Permission for a fireworks display only, taking into consideration the damage which may be caused to the ground by a larger event taking place throughout the day in the park
  - c) Decline the request for a licence, and await the outcome of feedback from the Event Survey to consider this as a future event (preferred option).
23. The Park's Gardener has hosted 'Meet the Gardener' sessions in the Quiet Garden. The gardener is available to share his horticultural knowledge with the public. These sessions are held on Saturdays and the dates are advertised on posters in the Quiet Garden and via Twitter.
24. A very popular activity with local schools is bulb planting. Over 3,000 bulbs were planted on the bunds located at the southern end of the park. Visitors have commented on the impressive display of Daffodils in the park in the spring.
25. A visitor's satisfaction survey was carried out earlier this year; Queen's Park scored an average 4.6 out of 5. Results of this survey can be found at Appendix 1.
26. Seven requests to film in the Park have been made this year, with four requests being granted (three organisations withdrew their application). These filming requests generated £1,620 income.

27. The park continues to monitor its visitor number by gate counters at each gate. In 2015 the park received 1,082,376 visits; the farm received 122,308 and the children's play area 226,748.
28. The Park Supervisor has registered details on to the Brent Volunteering website <http://www.volunteeringbrent.org.uk/>. A draft volunteering handbook has been produced. The objective is to have agreed projects and regular tasks which will enable the participation of volunteers, e.g. building a bug hotel in the woodland walk, assisting with planting projects or helping in the Children's Farm.

### **Children's Play Area**

29. Planting at the back of the playground has been removed ready to be turfed. Unfortunately this area was not very successful due to the children using it as an area to run through, which caused damage to the plants. Some of the plants that were removed have been replanted in the gardens or potted up for future use.
30. The Park Supervisor is developing a project to make improvements in the sand pit area of the playground. Consultation will take place with our visitors and this will enable the production of a final design. A consultant will provide support with this project, producing a design brief, and assisting with the consultation process.
31. A complaint has been received from a local resident from with regards to the metal edging around the safety surface in the playground. This will be considered as part of the annual safety review of the play equipment by RoSPA. Quotations have been obtained giving consideration to a rubberised compound being used in the play area abutting the metal edged pathways.

### **Ecology and Environment**

32. Queen's Park has a contract with Veolia who remove recycling on a fortnightly basis. Previously this service was free of charge, it now costs the park £760.00 per annum. General waste continues to be removed from Queen's Park by Amey, the City of London Corporation's preferred contractor. Green waste is no longer collected by the London Borough of Brent. The park hires skips to manage the green waste and these are removed by Amey. Costs per skip vary between £360 and £490. After the 2015 Christmas period the London Borough of Brent collected over a thousand Christmas trees from the park.
33. The Kensal to Kilburn Transition Town allotment at the rear of the café continues to be maintained by a small group of volunteers, with an assortment of fruit and vegetables being grown. The Big Dig event was held in April, the group gathered and spent the day tidying the vegetable plot and preparing it by planting various vegetables.

### **Conservation and Heritage**

34. The park has entered in to the 20<sup>th</sup> year of the Green Flag Award scheme and it hopes that it can achieve its 20<sup>th</sup> Green Flag Award. The park has also entered in

the London in Bloom scheme. In 2015 the park received a Silver Gilt Award, and staff are striving to achieve a Gold Award in 2016.

35. In regard to actions within the Conservation Management Plan, steady progress is being made with a number of the actions. Examples of these successes include: continuing to engage the local community in the management of the park and decisions about future developments, improving the conditions of the park's structures and buildings, seeking advice and assistance from specialists when appropriate, conserving and enhancing hedgerow habitats and continuing to provide high quality visitor facilities.

### **Landscape Management**

36. Oak Processionary Moth (OPM) has been detected in some of the Oak trees in the park. A small number of nests have been removed by a specialist contractor and an area of 50 metres in diameter around the affected tree has been sprayed. The Heath's Arboricultural Team will continue to monitor the Oak trees for any signs of OPM.
37. Massaria is evident in the London Plane trees in the park and branches with the fungus are removed by the Arboricultural Team. Regular inspection visits to the park are carried and the focus is on the removal of branches that overhang pathways.
38. The hedges around the perimeter of the tennis courts, the farm and the yard have been reduced in height. The tennis courts can now be seen from the golf course and the light and airflow that this has created has had a positive effect on weeds such as moss.

### **Sports and Recreation**

39. A project to introduce an online tennis booking application is progressing well. A soft launch is planned for the 24 July 2016 which will include a Great British Tennis Weekend event. This online application is supported by the Lawn Tennis Association (LTA). The Open Space Department is encouraging sport and physical exercise in its open spaces; one way of achieving this is by encouraging people to play tennis and increasing usage on our tennis courts. To support this approach the City Corporation and the LTA have entered in to a partnership agreement.
40. Early conversations are taking place with the City Surveyor's Department in regard to the refurbishment of the tennis courts under the 20 Year Additional Work Programme. An initial approach has also been made to the LTA in regard to additional funding for this project.
41. A company called Try Tag Rugby who are affiliated to the Rugby Football League have been issued with a licence to use part of the main field for 16 sessions from April until August. The sessions take place on Thursday evenings and a partial rugby pitch is marked out each week. As this is a licensed activity a fee is charged for the use of the main field and the staff time.

42. Group tennis lessons have been organised by the City Corporation throughout the summer, they are for all skill levels from beginners to advanced. The courses have been promoted via the web, social media and promotional banners around the park.

### **Corporate & Strategic Implications**

43. This report will help fulfil the City of London Corporation's Corporate Plan 2015-19; to provide valued services, such as education, employment, culture and leisure, to London and the nation. The report also meets the Department's Strategic Goals and Objectives; Protect and conserve the ecology, biodiversity and heritage of our sites, Embed financial sustainability across our activities by delivering identified programmes and projects, Enrich the lives of Londoners by providing high quality and engaging educational and volunteering opportunities, Improve the health and wellbeing of community through access to green space and recreation. The report also contributes to the Departmental values of quality, inclusion, environment, promotion and people.

### **Implications**

44. The operational requirements highlighted in the report will be met from the Queen's Park Local Risk Budget.

### **Conclusion**

45. This report demonstrates the continued hard work by the Queen's Park staff and the City of London Corporation in maintaining a good quality Open Space.

### **Appendices**

- Appendix 1 – Queen's Park Satisfaction Survey

### **Richard Gentry**

Constabulary and Queen's Park Manager

T: 020 7332 3322

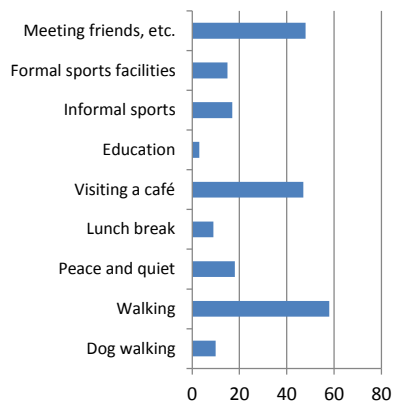
E: [richard.gentry@cityoflondon.gov.uk](mailto:richard.gentry@cityoflondon.gov.uk)



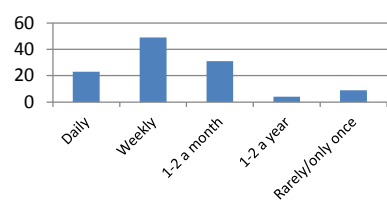
This page is intentionally left blank

## Queen's Park Survey Breakdown

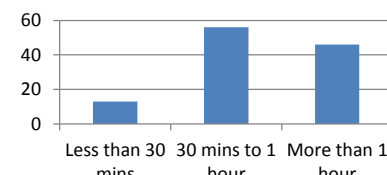
### Visit



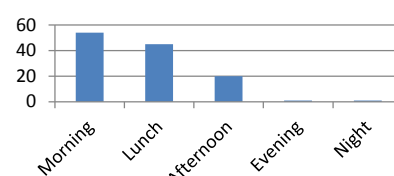
Reason for visit



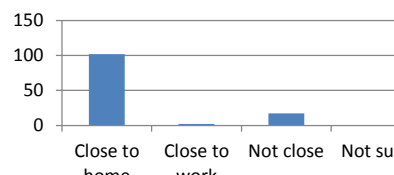
Visit frequency



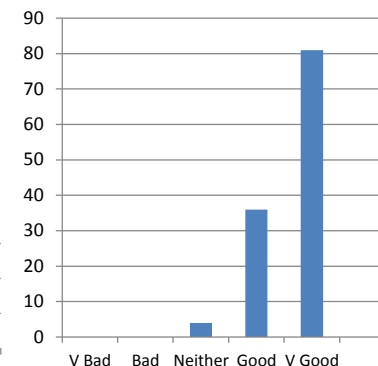
Average visit duration



Time of visit

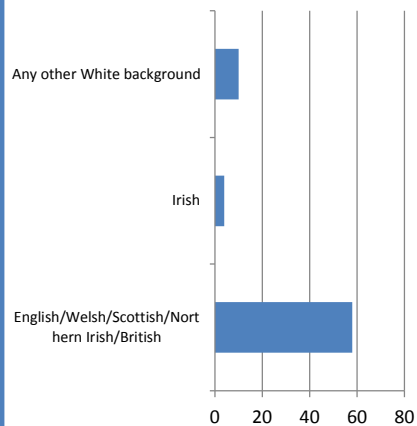


Site proximity

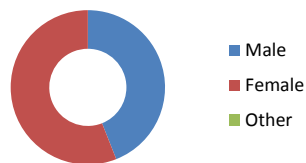


Visit ratings

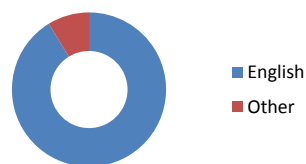
### Demographic



Ethnicity



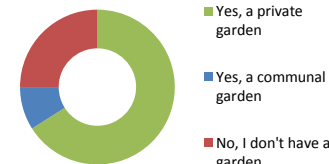
Gender



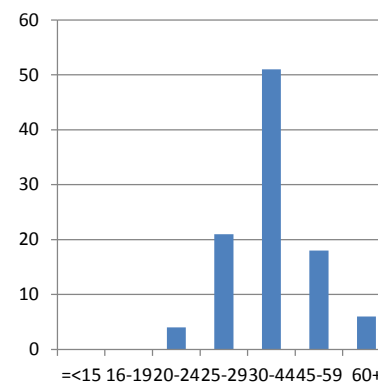
Primary language



Any disability



Garden access



Age



Annual 2016

This page is intentionally left blank

By virtue of paragraph(s) 3 of Part 1 of Schedule 12A  
of the Local Government Act 1972.

Document is Restricted

This page is intentionally left blank

Document is Restricted

This page is intentionally left blank